



Arbuthnot Road, SE14

£475,000

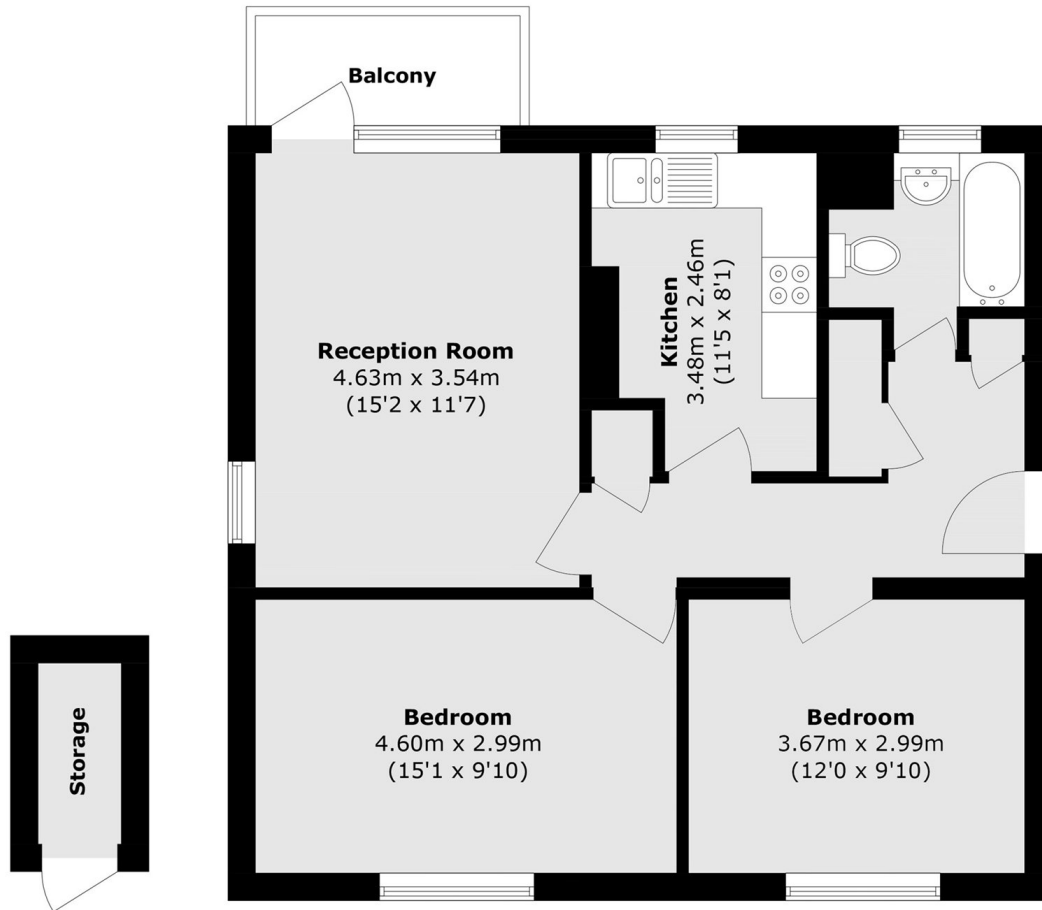
Bright and spacious two-bedroom purpose-built top-floor apartment, ideally situated within the highly sought-after Telegraph Hill Conservation Area. With generous sized bedrooms, ample storage and an abundant of natural light, this flat has a lot to offer.

The vibrant neighbourhood of New Cross offers an eclectic mix of independent cafés, bars and restaurants, alongside renowned live music venues and a thriving arts and cultural scene. Its convenient proximity to Nunhead also provides easy access to the area's popular independent eateries, green spaces and community atmosphere.

Features

- Two double bedrooms
- Well Finished Throughout
- Private balcony
- Telegraph Hill Conservation
- Communal Garden
- Close To Transport Links

Arbuthnot Road, London, SE14



Total area (approx.): 66.1 sq. m (711.5 sq. ft)
External Storage area (approx.): 1.8 sq. m (19.3 sq. ft)