

## 1 CAVENDISH HOUSE

Eastgate Gardens, Guildford, GU1 4AY

£2,000 pcm

A beautifully refurbished two-bedroom top-floor apartment in the heart of Guildford town centre. Boasting a spacious roof terrace with all-day sun and stunning views, this stylish home offers modern living, bright interiors, and convenient access to local amenities and transport links. (Internal photos for illustration only, while refurbishment is completed).

2



1

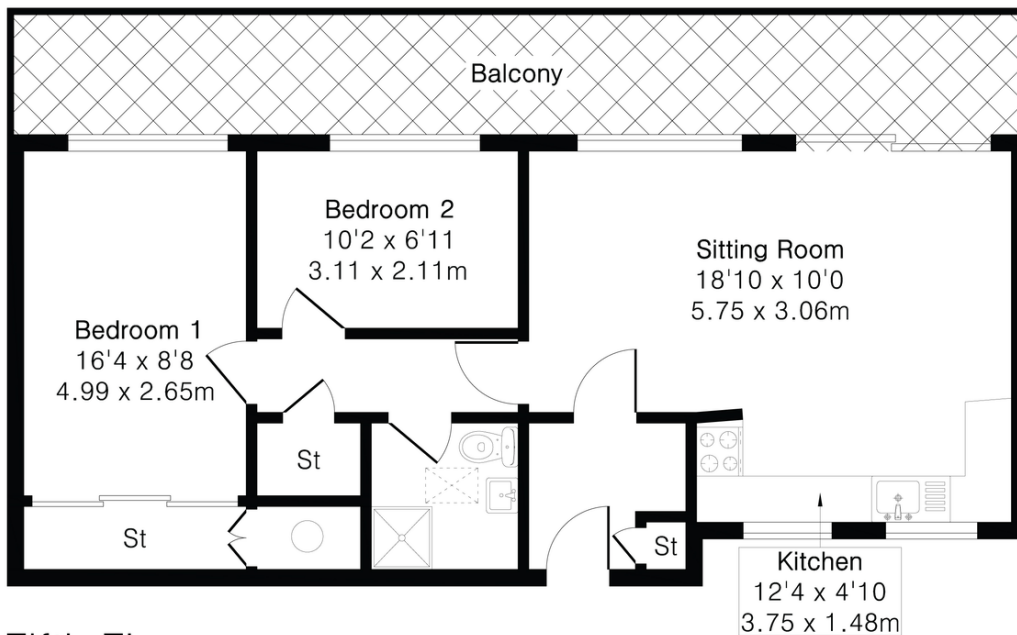


1





**Approximate Gross Internal Area 608 sq ft - 57 sq m**



Floor plan produced in accordance with RICS Property Measurement 2nd Edition. Although Pink Plan Ltd ensures the highest level of accuracy, measurements of doors, windows and rooms are approximate and no responsibility is taken for error, omission or misstatement. These plans are for representation purposes only and no guarantee is given on the total square footage of the property within this plan. The figure icon is for initial guidance only and should not be relied on as a basis of valuation.

