



Flat - First Floor (EPC Rating: D)

**FIRST FLOOR FLAT, 32
HATHERLEY GROVE,
BAYSWATER,
LONDON, W2 5RB**

**£3,000 Per
Month**



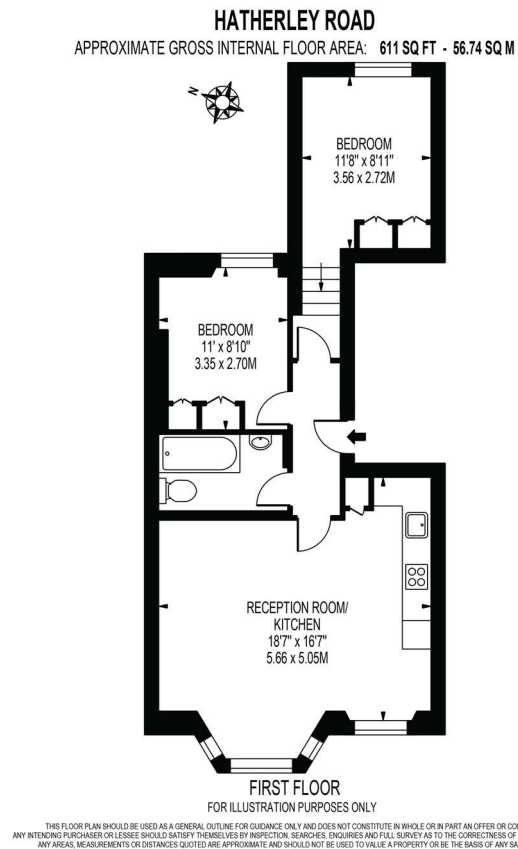
2 Bedroom Flat - First Floor located in London

Welcome to this beautifully refurbished first-floor flat located in the desirable area of Hatherley Grove, Bayswater, London. This charming property boasts a spacious and bright open-plan kitchen and reception room, perfect for both relaxation and entertaining. The modern design and ample natural light create an inviting atmosphere that you will surely appreciate.

The flat features two well-proportioned bedrooms, providing comfortable living space for individuals or small families. The bathroom is thoughtfully designed, ensuring convenience and style. Offered furnished, this property is ready for you to move in and make it your own.

Situated in a vibrant neighbourhood, you will find yourself surrounded by a variety of local amenities, including shops, cafes, and parks. The excellent transport links nearby make it easy to explore all that London has to offer.

This property is an ideal choice for those seeking a contemporary living space in a prime location. Don't miss the opportunity to view this delightful flat in Bayswater. Available from 18th July



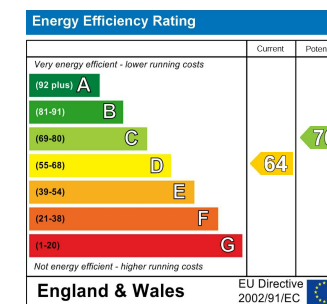
Call us on

02075824011

lettings@avrasons.co.uk

Council Tax Band

E



Agents Note: Whilst every care has been taken to prepare these particulars, they are for guidance purposes only. All measurements are approximate and are for general guidance purposes only and whilst every care has been taken to ensure their accuracy, they should not be relied upon and potential buyers are advised to recheck the measurements.

