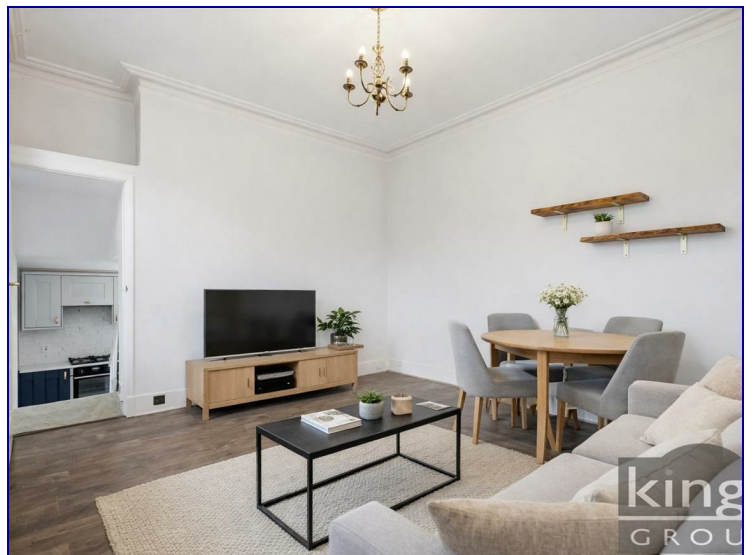


## Queen Annes Place, Enfield, EN1 2PS



**£1,600 Per Month**

Spacious First Floor One Bedroom Apartment, Available Now.

This property features a generous living room with high ceilings, a modern fitted kitchen with integrated appliances, a spacious double bedroom and contemporary three piece bathroom suite. Additional benefits include gas central heating and well kept communal grounds.

Ideally located just 0.1 miles from Bush Hill Park Station with direct routes to London Liverpool Street. This property also benefits from excellent road links via the A10, A406 and M25. Local shops, cafes, restaurants and amenities are within walking distance, while Enfield Town and Enfield Retail Park are just a short drive away.



GROUND FLOOR  
45.5 sq.m. (490 sq.ft.) approx.



TOTAL FLOOR AREA : 45.5 sq.m. (490 sq.ft.) approx.

Whilst every attempt has been made to ensure the accuracy of the floorplan contained here, measurements of doors, windows, rooms and any other items are approximate and no responsibility is taken for any error, omission or mis-statement. This plan is for illustrative purposes only and should be used as such by any prospective purchaser. The services, systems and appliances shown have not been tested and no guarantee as to their operability or efficiency can be given.  
Made with Metropix ©2025

Energy Efficiency Rating		Current	Potential
Very energy efficient - lower running costs			
(92 plus) <b>A</b>			
(81-91) <b>B</b>			
(69-80) <b>C</b>			
(55-68) <b>D</b>			
(39-54) <b>E</b>			
(21-38) <b>F</b>			
(1-20) <b>G</b>			
Not energy efficient - higher running costs			
<b>England &amp; Wales</b>	EU Directive 2002/91/EC	70	80

Environmental Impact (CO <sub>2</sub> ) Rating		Current	Potential
Very environmentally friendly - lower CO <sub>2</sub> emissions			
(92 plus) <b>A</b>			
(81-91) <b>B</b>			
(69-80) <b>C</b>			
(55-68) <b>D</b>			
(39-54) <b>E</b>			
(21-38) <b>F</b>			
(1-20) <b>G</b>			
Not environmentally friendly - higher CO <sub>2</sub> emissions			
<b>England &amp; Wales</b>	EU Directive 2002/91/EC		



Associated Offices in London, Essex and Hertfordshire  
Kings Head Office Tudor Lodge, Burton Lane, Goffs Oak, Hertfordshire EN7 6SY Tel: 01707-872000

