

Acacia Road, SW16

£430,000

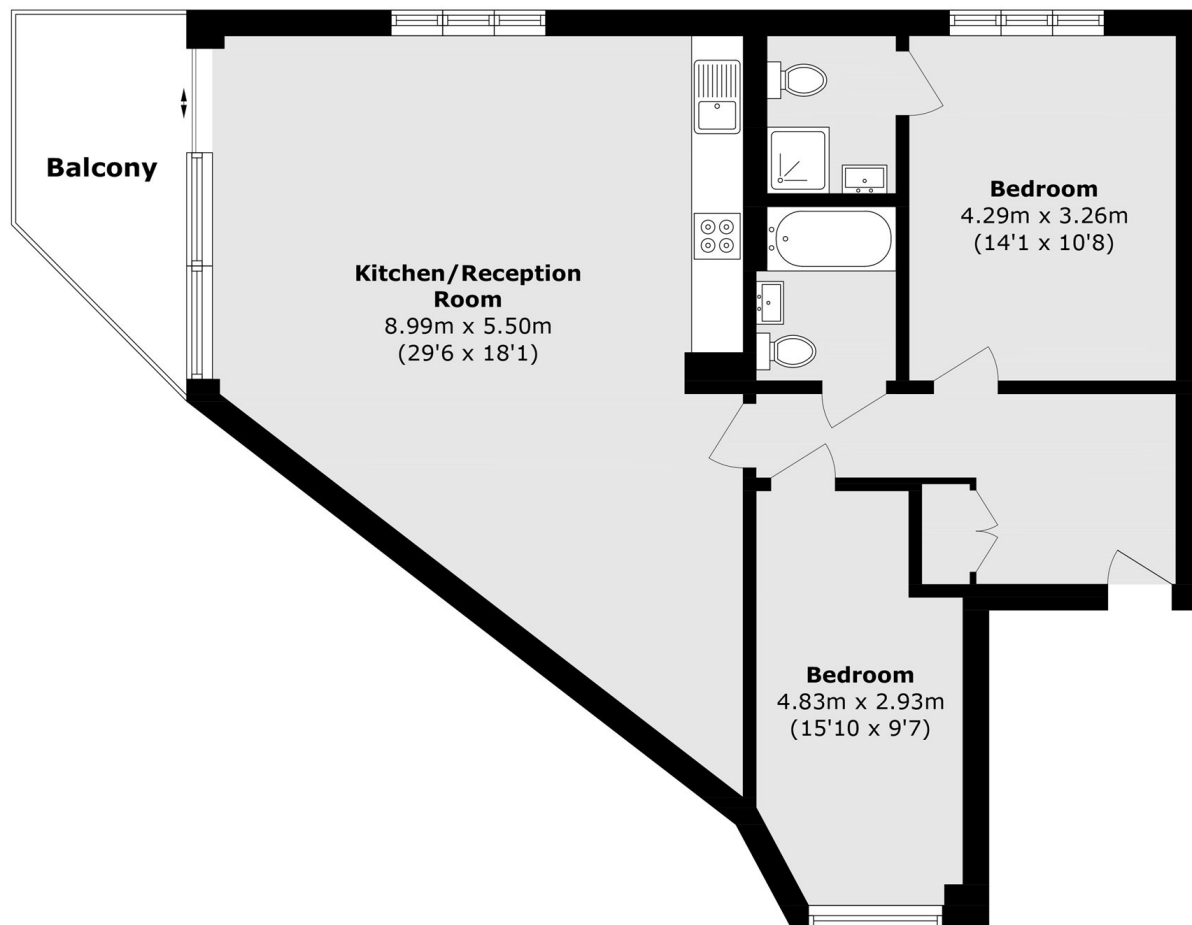
An extremely large two bedroom two bathroom apartment spanning to 887 square feet. Situated on the first floor of this share of the freehold block with a lift to each floor. There is a large balcony, a high specification German designed kitchen, as well as German appliances throughout.

Lilium House is a boutique development tucked nicely away from the hustle and bustle of the main road but within convenient walking distance to shops, bars, restaurants and cafes as well as with extremely easy access to Norbury Station. The green open spaces of Norbury Park are just across the road, with Streatham Common also just a short walk away.

Features

- Two Large Double Bedrooms
- Two Bathrooms
- Large Balcony
- Underfloor Heating In the Bathroom
- 999 Year Lease
- Share Of The Freehold

Acacia Road, Streatham, SW16



Total area (approx.): 81.3 sq. m (875.1 sq. ft)