



1 Sycamore Barn Main Street, Taddington, Derbyshire, SK17 9TY



1 Sycamore Barn Main Street Taddington

£575,000

Nestled in the charming village of Taddington, Buxton, this delightful barn conversion offers a unique blend of rustic charm and modern living. Built in 1992, the property boasts a spacious layout, featuring two inviting reception rooms that provide ample space for relaxation and entertaining. With four well-proportioned bedrooms, this home is perfect for families or those seeking extra space for guests or a home office.

The property includes two bathrooms, ensuring convenience for all occupants. Outside, you will find parking available for up to four vehicles, a rare find in such a picturesque location. The barn's character is complemented by its tranquil surroundings, making it an ideal retreat from the hustle and bustle of everyday life.

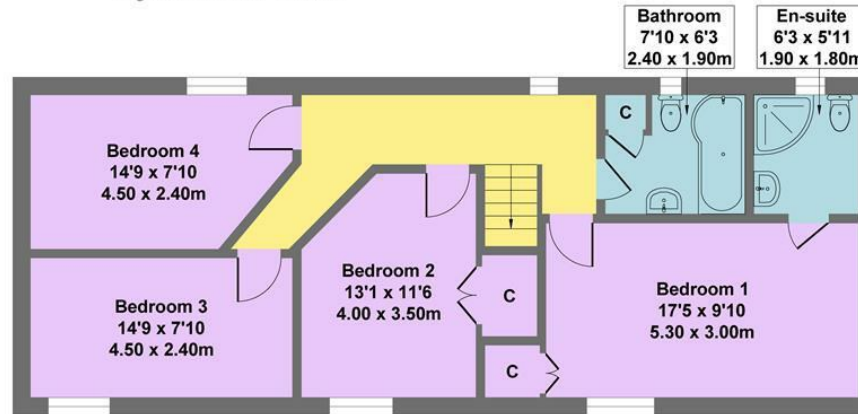
This property is not just a home; it is a lifestyle choice, offering the opportunity to enjoy the beauty of the Peak District while being close to local amenities. Whether you are looking for a permanent residence or a weekend getaway, this barn conversion is sure to impress. Do not miss the chance to make this charming property your own.

- Four Bedrooms & Two Bathrooms
- Two Reception Rooms & Attractive Garden
- Ideal Family Home Within Highly Regarded School Catchment
- Charming Barn Conversion Brimming With Character Features
- Double Garage & Off Road Parking
- Attractive Rear Garden
- Peaceful & Picturesque Setting
- Easy Reach Of Bakewell & Buxton
- EPC: TBC
- Viewings: Bakewell Office

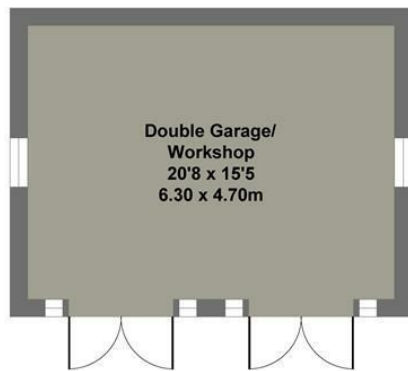




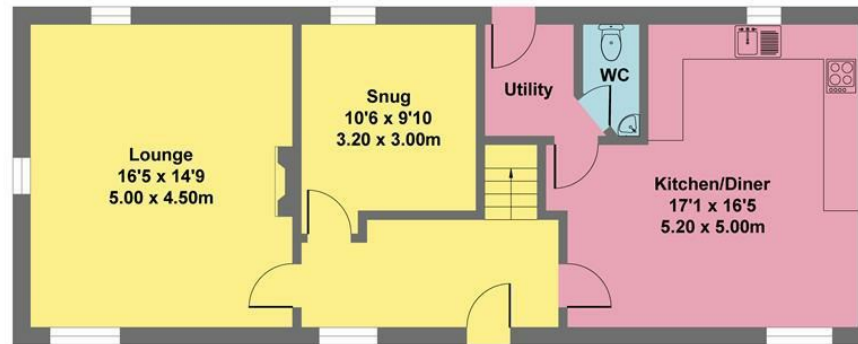
Sycamore Barn



First Floor
Approximate Floor Area
796 sq.ft
(73.93 sq.m.)



Garage
Approximate Floor Area
319 sq.ft
(29.61 sq.m.)



Ground Floor
Approximate Floor Area
796 sq.ft
(73.93 sq.m.)

Approx. Gross Internal Floor Area 1911 sq.ft / 177.47 sq.m

Illustration for identification purposes only. Measurements are approximate, not to scale

While we endeavour to make our sales particulars fair, accurate and reliable, they are only a general guide to the property and, accordingly, if there is any point, which is of particular importance to you, please contact the relevant office. The Agents have not tested any apparatus, equipment, fittings or services and so cannot verify they are in working order. The buyer is advised to obtain verification. Please note all the measurement details are approximate and should not be relied upon as exact. All plans, floor plans and maps are for guidance purposes only and are not to scale. Under no circumstances should they be relied upon as exact or for use in planning carpets and other such fixtures, fittings or furnishings. YOUR HOME IS AT RISK IF YOU DO NOT KEEP UP REPAYMENTS ON A MORTGAGE OR OTHER LOAN SECURED ON IT. 'A Life Assurance policy may be requested.' 'Written Quotations of credit terms available on request.'

Banner Cross
T: 0114 268 3241
E: bannercross@saxtonmee.co.uk
www.saxtonmee.co.uk

Hathersage
T: 01433 650009
E: hathersage@saxtonmee.co.uk

Bakewell
T: 01629 815307
E: bakewell@saxtonmee.co.uk

Matlock
T: 01629 828250
E: matlock@saxtonmee.co.uk

