



High Street, Winslow, MK18 3DQ

Guide Price £165,000

01280 460360

sales@hatfieldshaw.co.uk

www.hatfieldshaw.co.uk

**Hatfield
Shaw & Co**
INDEPENDENT ESTATE AGENTS



Bedrooms: 1

Bathrooms: 1

Receptions: 1

A well-presented ground floor one-bedroom apartment, ideally situated in the heart of Winslow town centre, offering convenient access to a range of local amenities.

The property benefits from its own private entrance to the rear, providing a sense of privacy and independence. Internally, the accommodation comprises a bright open-plan kitchen, lounge and dining area, creating a practical and sociable living space.

The property further offers a well-proportioned double bedroom, along with a shower room and separate WC, adding flexibility and convenience.

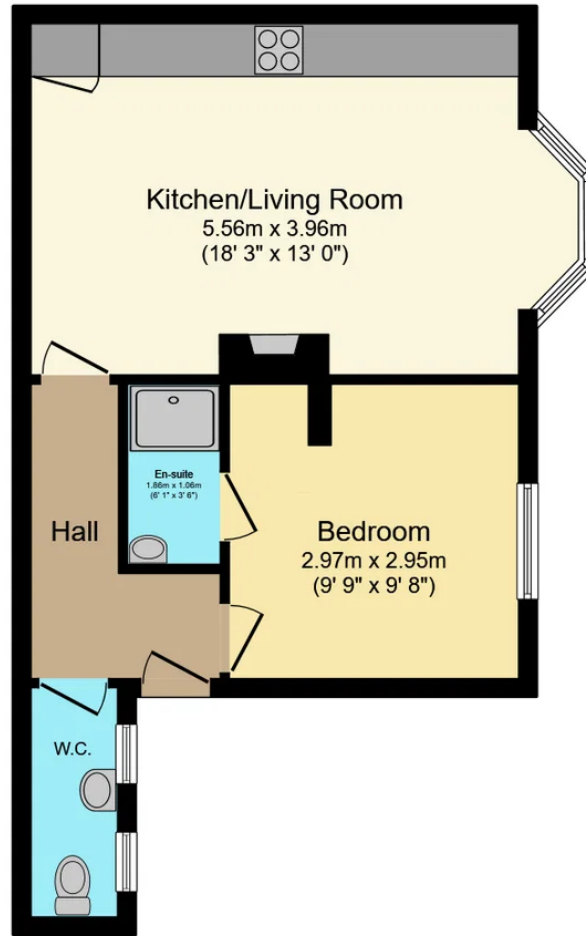
Externally, access to a communal courtyard garden, ideal for outdoor relaxation.

An ideal opportunity for first-time buyers, downsizers or investors seeking a centrally located and low-maintenance home.

Freehold. Not listed. Conservation area. EPC band D. Council tax band A. Mains electricity, water, and drainage. Electric heating. Traditional solid brick construction. Superfast broadband (1000 Mbps) available. "Good mobile phone coverage" (EE). No restrictions. Level access. Very low risk of flooding. No official parking.







Ground Floor

Total floor area: 37.5 sq.m. (404 sq.ft.)

This floor plan is for illustrative purposes only. It is not drawn to scale. Any measurements, floor areas (including any total floor area), openings and orientations are approximate. No details are guaranteed, they cannot be relied upon for any purpose and do not form any part of any agreement. No liability is taken for any error, omission or misstatement. A party must rely upon its own inspection(s). Powered by www.Propertybox.io

