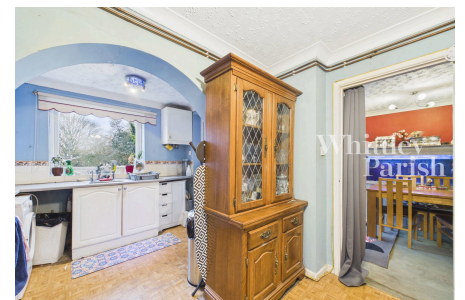


St Michaels View, Flordon

Guide Price £270,000-£280,000

3 1 1



A three bedroom semi-detached family home situated in the village of Flordon with beautiful rural views to the side. An entrance porch leads into the hallway, both giving space for shoes, coats etc, with stairs rising to first floor level. A large lounge/diner offers excellent space for socialising and gives access to an extended kitchen and a brick based upvc double glazed conservatory. Upstairs the landing serves three double bedroom and a family bathroom. The property is tucked away at the end of St Michaels View accessed via a private drive providing off-road parking for multiple vehicles leading to the single garage (having up and over door to front). The main gardens are found to the rear of the property being predominantly laid to lawn and enjoying rural views to the side and having a south westerly facing aspect.

Key Features

- Guide Price £270,000-£280,000
- 0.18 acre plot
- Sought after village
- Southerly facing garden with rural views
- Three double bedrooms
- Single garage
- Conservatory
- Private drainage - LPG heating
- EPC Rating E - Council Tax Band B
- Freehold

