



OVER 60?
Secure this property
for up to **59% less!**

Guide Price
£350,000

Freehold

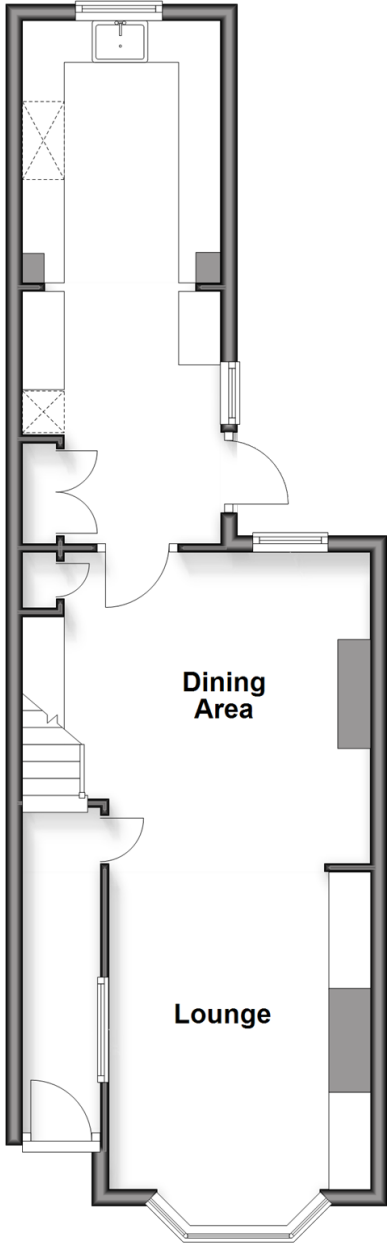
2x 🏠 1x ↻ 1x 🚗

**Holborough Road,
Snodland, Kent, ME6**

Wards
Helping you move forwards

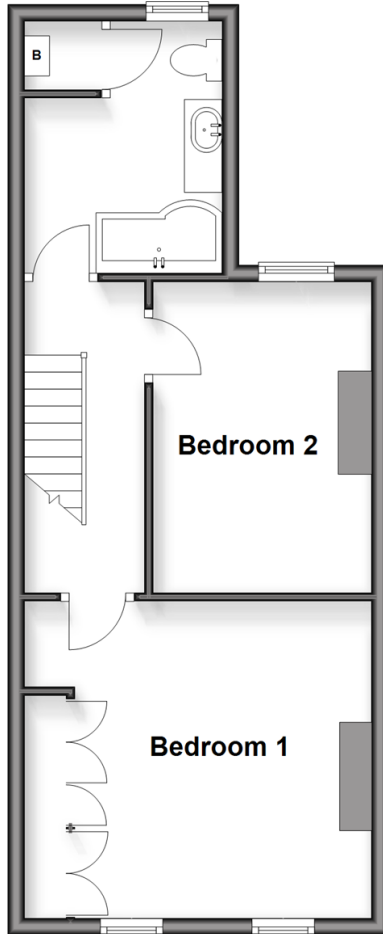
Ground Floor

Approx. 46.4 sq. metres (499.3 sq. feet)



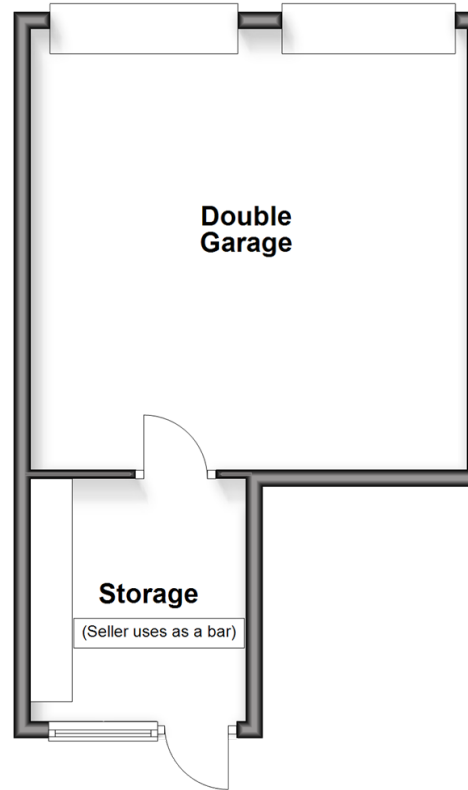
First Floor

Approx. 39.2 sq. metres (421.7 sq. feet)



Outbuilding

Approx. 35.4 sq. metres (381.4 sq. feet)



Accommodation

GROUND FLOOR

Entrance Hall

Lounge: 12'5 x 10'3 (3.79m x 3.13m)

Dining Area: 12'5 x 11'11 (3.79m x 3.63m)

Kitchen: 20'7 x 7'9 (6.28m x 2.36m)

FIRST FLOOR

Landing

Bedroom 1 : 12'5 x 11'6 (3.79m x 3.51m)

Bedroom 2: 12'5 x 12'1 (3.79m x 3.69m)

Bathroom: 9'11 x 8'2 (3.02m x 2.49m)

OUTBUILDING

Double Garage

Storage (seller uses as a bar)

OUTSIDE

Front and Rear Gardens

Driveway to Rear



Main features

- Stunning period home with a real sense of grandeur and style
- Parking is super easy in the large double garage and double driveway
- Superb village location, close to amenities
- Amazing kitchen with an in keeping yet modern style - cooking here is a dream
- Attention to detail is at the forefront of this beautiful home



Nearest Schools

Primary Schools: Valley Invicta Primary 0.2 miles, Snodland CofE Primary 0.5 miles, St Katherine's School 0.7 miles. Secondary Schools: Holmesdale Technology College 0.6 miles, Greenacre School 3.7 miles, Grange Park School 3.8 miles



Transport Information

Train Stations: Snodland 0.7 miles, Halling 1.5 miles, New Hythe 3.0 miles



Address

Holborough Road, Snodland, Kent, ME6



Directions

For directions to this property please contact us.



Wards
Helping you move forwards

Call Snodland Branch 01634 245055 ■ wardsof Kent.co.uk



- Legal advice should be taken to verify fixtures/fittings, planning, alterations and/or lease details
- Appliances & services are untested, dimensions are approximate and floor plans are not to scale
- Through a Homewise Home For Life Plan people aged 60+ can secure this property for up to 50% less, by purchasing a Lifetime Lease.

EPC RATING

CURRENT: D(59) POTENTIAL: C(78)

13821792/20251030/MM/LK