



Lyme Farm Road, SE12

£400,000

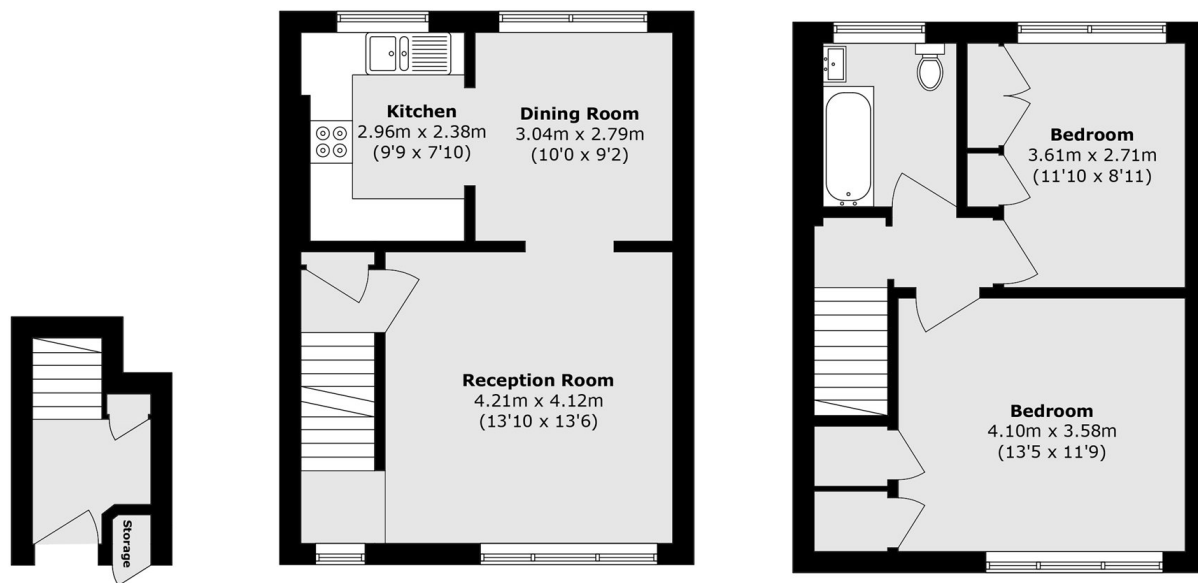
Two bedroom purpose built split-level maisonette with a garage is located in the highly sought-after Courtlands development, within easy walking distance to both Kidbrooke and Lee station including local amenities. The property boasts a bright and spacious layout with double glazed windows throughout, offering a modern contemporary feel throughout. The main floor includes an entrance hall, a lounge that opens up to a dining area, and a fully fitted kitchen. On the second floor, you'll find two generous double bedrooms and a well-appointed bathroom. This home presents an excellent opportunity for first-time buyers or investors alike. Viewing is highly recommended to fully appreciate the space and setting.

Located within close proximity to Kidbrooke & Lee stations, the popular Colfes independent school, Wingfield Primary School and the vibrant Blackheath Village

Features

- Share Of Freehold
- Spacious Top Floor Maisonette
- Open Plan Kitchen/Diner
- Two Double Bedrooms
- Easy Access To Both Stations
- Garage

Lyme Farm Road,
London, SE12



Ground Floor

First Floor

Second Floor

Total area (approx.): 79.4 sq. m (854.6 sq. ft)
External Storage area (approx.): 0.2 sq. m (2.1 sq. ft)