

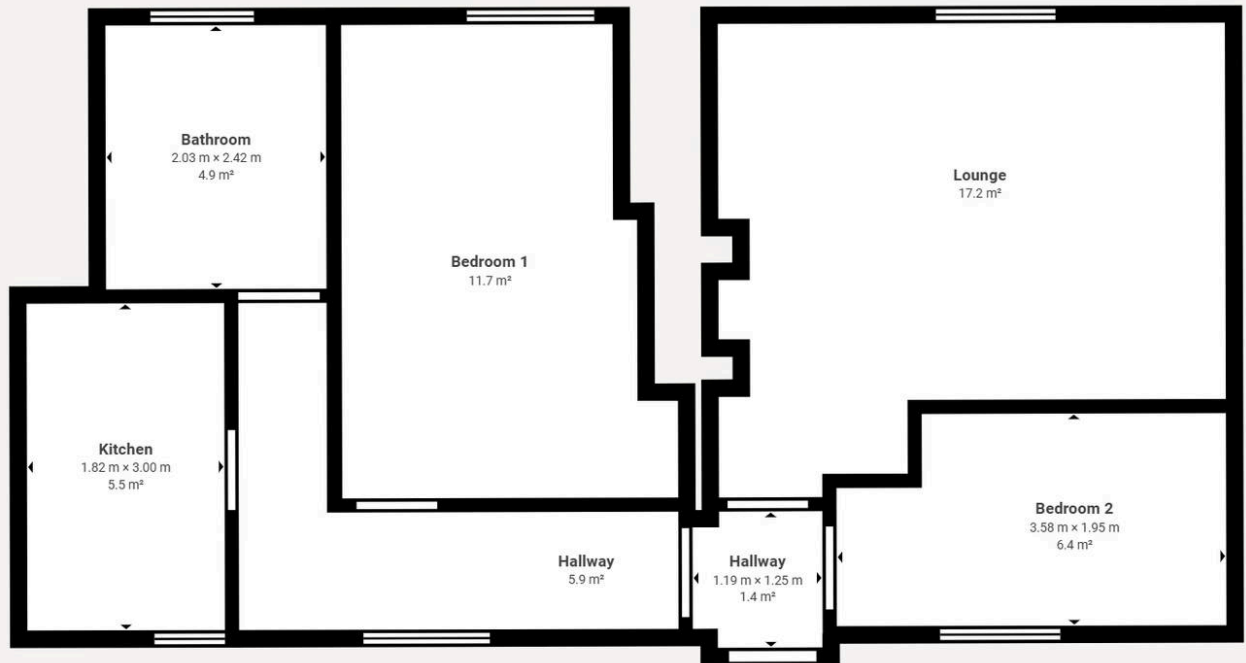
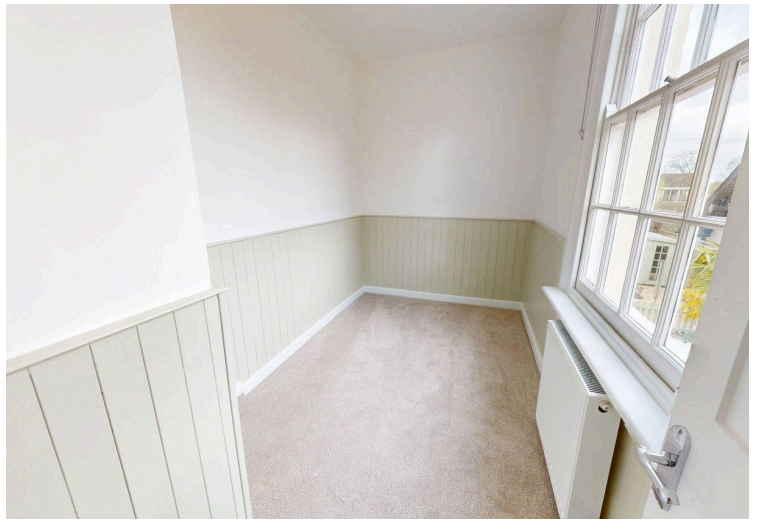


Manor Farm Road, Dorchester-On-Thames

£1,500 pcm



• 2 Bedrooms • Situated within a handsome Grade II listed building • Fully refurbished to a high standard throughout • Communal rear Courtyard Garden • Refitted Kitchen with Bosch Integrated Appliances • New Shower Suite with Walk in Cubicle, Wash Basin & W.C. • Gas central heating



Matterport Property Report:

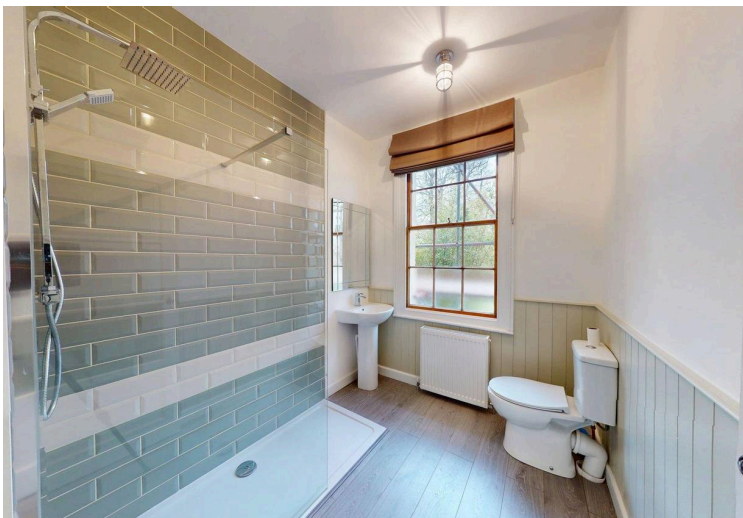
Manor Farm Road, Dorchester-On-Thames

Gross Floor Area - Full Property 64.0 m² | Floor 1 64.0 m²

Sizes and dimensions are approximate, actual may vary



Visit 3D space on
Matterport



Energy Efficiency Rating

	Current	Potential
Very energy efficient - lower running costs		
(92+) A		
(81-91) B		82
(69-80) C	71	
(55-68) D		
(39-54) E		
(21-38) F		
(1-20) G		
Not energy efficient - higher running costs		
England, Scotland & Wales	EU Directive 2002/91/EC	