

shepherds

A better home  
moving experience



32 Badgers Close

Hertford, SG13 7UU

**Guide Price £425,000**



## 32 Badgers Close

Hertford, SG13 7UU

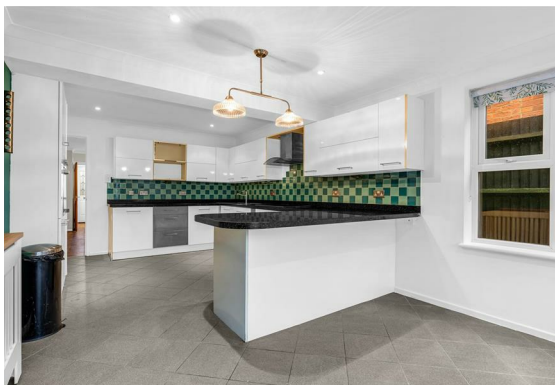
**SOLD BY SHEPHERDS** - Situated within the ever-popular Foxholes development, this well-presented two-bedroom semi-detached home benefits from two allocated parking spaces directly in front of the property and has been extended on the ground floor to create generous and well-balanced living accommodation. Offered to the market with no onward chain, the property combines a practical layout with a highly sought-after residential setting.

The property is approached via a useful front porch, which opens into a generously sized living room. This flows seamlessly through to the rear of the house where a ground floor extension has created an excellent open-plan kitchen and dining space. This area works particularly well for both day-to-day living and entertaining, with doors opening directly onto the rear garden.

Upstairs, the property offers two good-sized bedrooms, both served by a modern family bathroom.

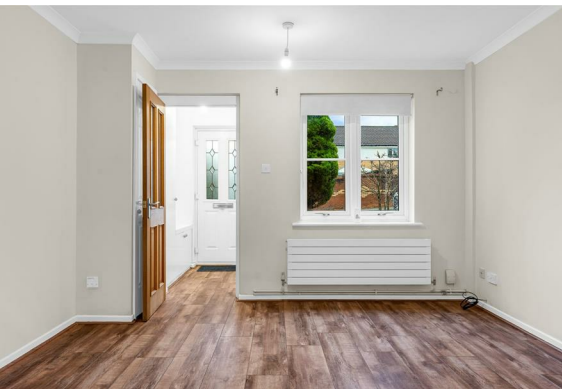
Externally, the home benefits from two allocated parking spaces positioned directly in front of the house, along with a private rear garden.

Badgers Close is set within the sought-after Foxholes area, well regarded for its quiet residential setting, green spaces and convenient access to Hertford town centre, local schools and transport links.

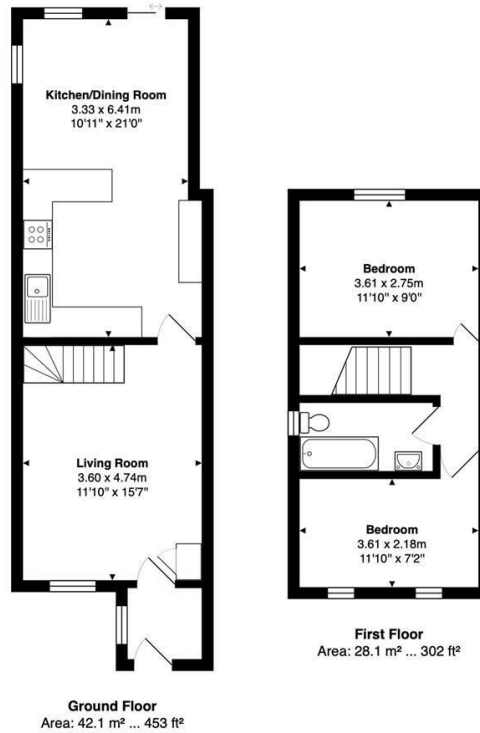




- Two-bedroom semi-detached home
- Sought-after Foxholes location
- Ground floor extension with open-plan kitchen/diner
- Spacious living room
- Two allocated parking spaces directly outside
- Private rear garden
- Chain-free



## Floor Plan

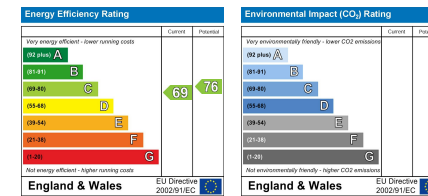


FOR ILLUSTRATIVE PURPOSES ONLY: NOT TO SCALE  
Whilst every attempt has been made to ensure the accuracy of the floor plan shown, all measurements, positioning, fixtures, features, fittings and any other data shown are an approximate interpretation for illustrative purposes only and are not to scale. No responsibility is taken for any error, omission, miss-statement or use of data shown.  
Property marketing provided by [www.matthewkyle.co.uk](http://www.matthewkyle.co.uk)

## Viewing

Please contact Shepherds of Hertford on 01992 551955 if you wish to arrange a viewing appointment for this property or require further information.

## Energy Performance Graph



These particulars, whilst believed to be accurate are set out as a general outline only for guidance and do not constitute any part of an offer or contract. Intending purchasers should not rely on them as statements of representation of fact, but must satisfy themselves by inspection or otherwise as to their accuracy. No person in this firm's employment has the authority to make or give any representation or warranty in respect of the property.

Riverside House, 6 Millbridge, Hertford, SG14 1PY  
Tel: 01992 551955 Email: [enquiries@shepherdsfhertford.co.uk](mailto:enquiries@shepherdsfhertford.co.uk)