



Pantglas Road, offers over £155,000

- Council Tax Band A
- Well-presented throughout
- Ideal first-time buy
- Popular location
- No onward chain
- EPC Rating: C



 3
  1
  1



About the property

A charming three-bedroom terraced house for sale being sold with no onward chain. This house is a home full of potential, perfect for first-time buyers, investors, or families looking to settle.

The property benefits from a welcoming reception room and a well-proportioned kitchen, offering access to the garden.

The house boasts bedrooms and a conveniently located bathroom on the ground floor, facilitating easy access and movement throughout the property.

One of the unique features of this property is its garden. Additionally, the property enjoys the convenience of rear lane access, adding an extra layer of ease for residents.

Located near public transport links, local amenities, and walking routes, everything you need is right at your doorstep. For families with children, the proximity to nearby schools will be an added benefit.



Accommodation

Hallway

Living/Dining Room

20' 8" Max x 15' 7" Max (6.30m Max x 4.75m Max)

Kitchen

12' 6" Max x 8' 8" Max (3.81m Max x 2.64m Max)

Bathroom

Landing

Bedroom 1

12' 3" Max x 9' 2" Max (3.73m Max x 2.79m Max)

Bedroom 2

8' 3" Max x 8' 5" Max (2.51m Max x 2.57m Max)

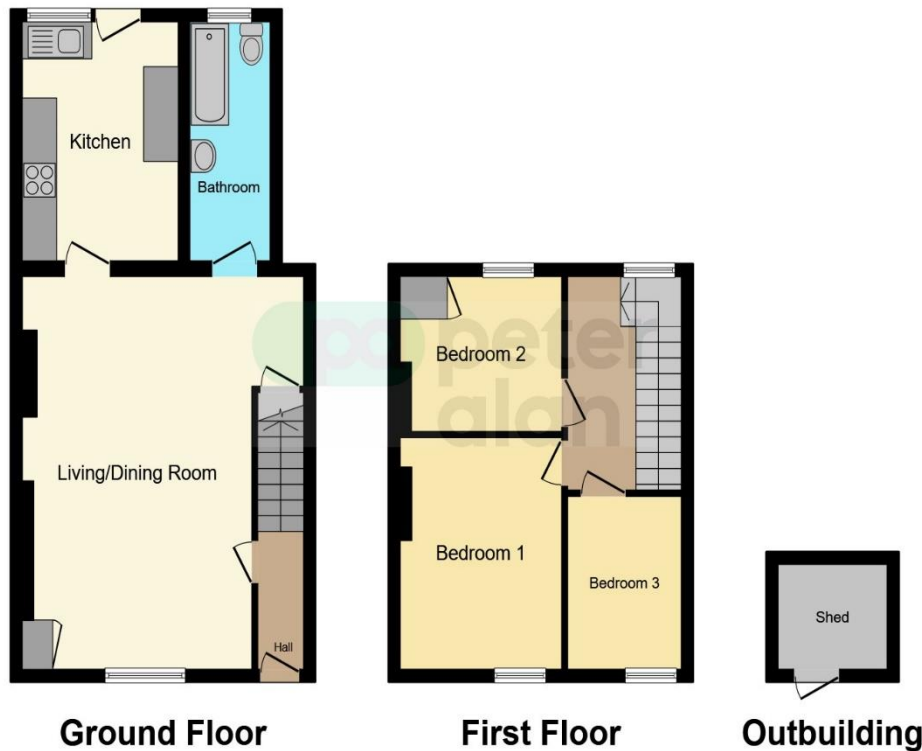
Bedroom 3

5' 9" Max x 6' 2" Max (1.75m Max x 1.88m Max)

01685 722223

merthytydfil@peteralan.co.uk

Floorplan



This floor plan is for illustrative purposes only. It is not drawn to scale. Any measurements, floor areas (including any total floor area), openings and orientation are approximate. No details are guaranteed, they cannot be relied upon for any purpose and they do not form part of any agreement. No liability is taken for any error, omission or misstatement. A party must rely upon its own inspection(s). Powered by www.focalagent.com

Important Information

Note while we endeavour to make our sales details accurate and reliable, if there is any point which is of particular interest to you, please contact the office and we will be pleased to confirm the position for you. We have not personally tested any apparatus, equipment, fixtures, fittings or services and cannot verify they are in working order or fit for their purposes. Nothing in these particulars is intended to indicate that carpets or curtains, furnishings or fittings, electrical goods (whether wired or not). Gas fires or light fittings or any other fixtures not expressly included form part of the property offered for sale. This computer generated Floorplan, if applicable, is intended as a general guide to the layout and design of the property. It is not to scale and should not be relied upon for dimensions. Tenure: We cannot confirm the tenure of the property as we have not had access to the legal documents. The buyer is advised to obtain verification from their solicitor or surveyor.

Peter Alan Limited is registered in England and Wales under company number 2073153, Registered Office is Cumbria House, 16-20 Hockliffe Street, Leighton Buzzard, Bedfordshire, LU7 1GN. VAT Registration Number is 500 2481 05. For activities relating to regulated mortgages and non-investment insurance contracts, Peter Alan Limited is an appointed representative of Connells Limited which is authorised and regulated by the Financial Conduct Authority. Connells Limited's Financial Services Register number is 302221. Most buy-to-let

pa peter
alan