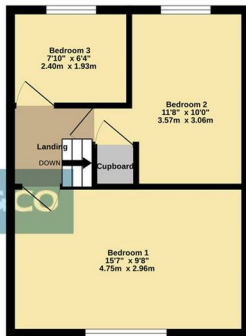
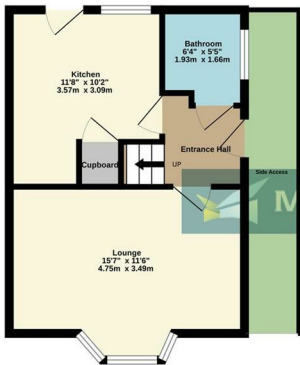




Ground Floor  
342 sq.ft. (31.8 sq.m.) approx.

1st Floor  
333 sq.ft. (31.0 sq.m.) approx.



TOTAL FLOOR AREA : 676 sq.ft. (62.8 sq.m.) approx.  
Whilst every attempt has been made to ensure the accuracy of the figures contained here, measurements of doors, windows, rooms and any other items are approximate and no responsibility is taken for any error, omission or misstatement. This plan is for illustrative purposes only and should be used as such for any prospective purchaser. The services, systems and appliances shown have not been tested and no guarantee as to their operability or efficiency can be given.  
 Made with Metshape 12/2020



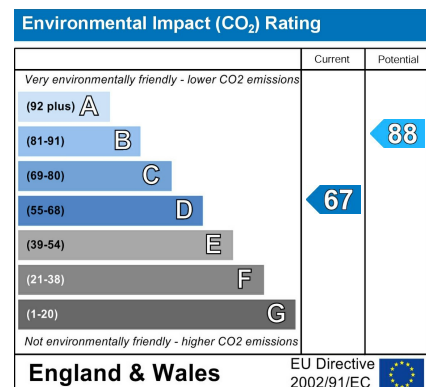
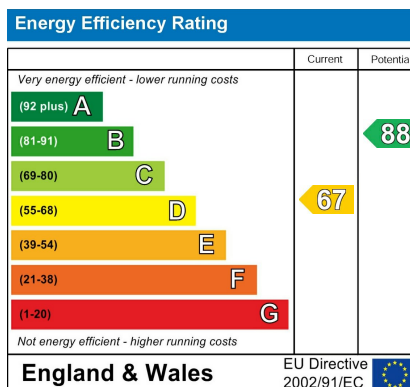
## Dorrit Way, Rochester

### 3 Bedroom, 1 Bathroom, House - Semi-Detached

£289 000



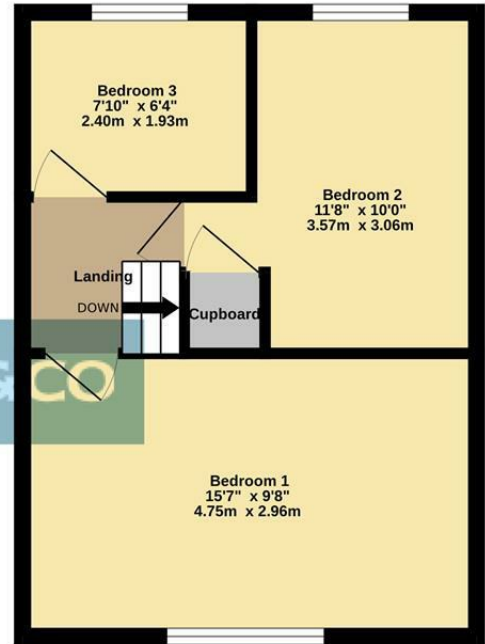
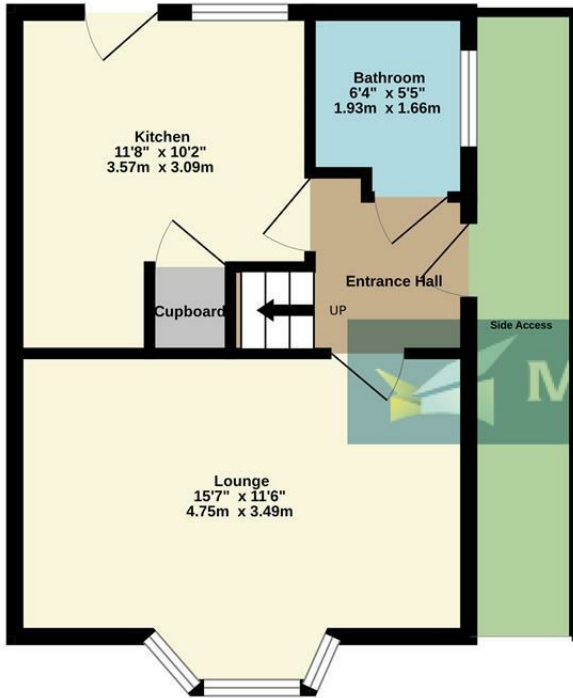
- CHAIN FREE
- THREE GOOD SIZE BEDROOMS
- GREAT SIZE PRIVATE REAR GARDEN
- DRIVEWAY FOR ONE CAR
- OUTSTANDING PUBLIC TRANSPORT LINKS
- PROXIMITY TO SEVERAL LOCAL SCHOOLS
- CLOSE TO LOCAL AMENITIES
- EPC RATING 'D'
- COUNCIL TAX RATING 'C'
- CALL NOW TO BOOK YOUR VIEWING





Ground Floor  
342 sq.ft. (31.8 sq.m.) approx.

1st Floor  
333 sq.ft. (31.0 sq.m.) approx.



TOTAL FLOOR AREA : 676 sq.ft. (62.8 sq.m.) approx.

Whilst every attempt has been made to ensure the accuracy of the floorplan contained here, measurements of doors, windows, rooms and any other items are approximate and no responsibility is taken for any error, omission or mis-statement. This plan is for illustrative purposes only and should be used as such by any prospective purchaser. The services, systems and appliances shown have not been tested and no guarantee as to their operability or efficiency can be given.  
Made with Metropix ©2026

01634 838700

<http://www.martinco.com>

Martin & Co Medway Lettings  
161 High Street, Rochester, Kent, ME1 1EH  
01634 838700 . medway@martinco.com



**Accuracy:** References to the Tenure of a Property are based on information supplied by the Seller. The Agent has not had sight of the title documents. A Buyer is advised to obtain verification from their Solicitor. Items shown in photographs including but not limited to carpets, fixtures and fittings are not included unless specifically mentioned within the sales particulars. They may however be available by separate negotiation. Buyers must check the availability of any property and make an appointment to view before embarking on any journey to see a property. No person in the employment of the agent has any authority to make any representation about the property, and accordingly any information given is entirely without responsibility on the part of the agents, sellers(s) or lessors(s). Any property particulars are not an offer or contract, nor form part of one. **Sonic / Laser Tape:** Measurements taken using a sonic / laser tape measure may be subject to a small margin of error. **All Measurements:** All Measurements are Approximate. **Services Not tested:** The Agent has not tested any apparatus, equipment, fixtures and fittings or services and so cannot verify that they are in working order or ?t for the purpose. A Buyer is advised to obtain verification from their Solicitor or Surveyor.

