

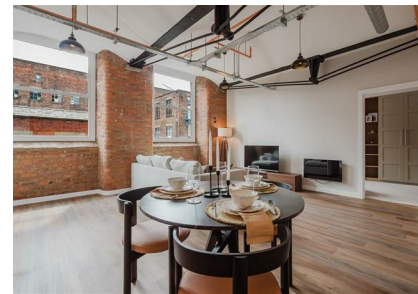
106 Bradford Road, Manchester, M40 7EZ

£260,000

Council Tax Band: New Build



ORLANDO REID



Grade II Listed Mill Conversion**

This gorgeous one-bedroom apartment offers a characteristic home for a wide range of tenants, with an abundance of nearby amenities and incredible access to the city centre. Featuring a spacious, open-plan kitchen and living area, a spacious bedroom, and a high specification bathroom.

Brunswick Mill is stunning Grade II Listed mill conversion, dating all the way back to 1837! It was once one of the largest mills operating in Manchester, and reportedly was the first mill in the UK to adopt electricity



ORLANDO REID

St Johns Court 19b Quay Street, Manchester, M3 3HN

01616760099

manchester@orlandoreid.co.uk

<https://www.orlandoreid.co.uk/manchester/>

Energy Efficiency Rating		
	Current	Potential
<i>Very energy efficient - lower running costs</i>		
(92 plus) A		
(81-91) B		
(69-80) C		
(55-68) D		
(39-54) E		
(21-38) F		
(1-20) G		
<i>Not energy efficient - higher running costs</i>		
England & Wales	EU Directive 2002/91/EC	