



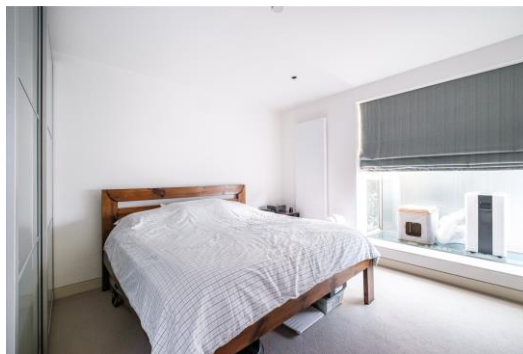
# The Mews

Arlington Conservation Area, N1

Asking Price £1,850,000

A three double bedroom, two bathroom freehold, situated in a secure, gated mews development, tucked away quietly in the Arlington Conservation area.

**CHESTERTONS**



# The Mews

Arlington Conservation Area, N1

- Three double bedrooms
- Two bathrooms
- Freehold
- Patio
- Roof terrace
- Situated in a secure gated mews development within the Arlington Conservation area



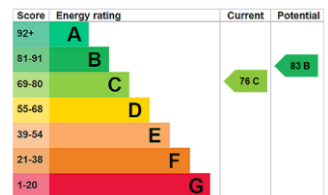
A three double bedroom, two bathroom freehold, situated in a secure, gated mews development, tucked away quietly in the Arlington Conservation area. Accommodation is generously proportioned and arranged over 2 levels comprising; a spacious entrance hallway leading to a double bedroom (currently being used as a study), which provides an access point, along with the hallway, to the vast open reception space which in turn leads to the kitchen, both of which provide access via bi-folding doors to the secluded patio garden. It should be noted that there is also a W.C on this level. The first floor houses two generous double bedrooms, one of which benefits from an en-suite shower room, and the family bathroom. There is a staircase from the first floor to the large roof terrace which spans the top of the building and is incredibly peaceful and secluded, which must be viewed to be truly appreciated. St Paul Street is one of the Arlington conservation area's quieter roads as there is no access via New North road. This property is brilliantly located for access to the city, whilst the many amenities of Islington Green are within close proximity, as well as a plethora of transportation links encompassing many bus routes to the City and West End, and Essex road British Rail connection is close by, whilst Angel Underground can also be found locally.

**Tenure:** Freehold

**Service Charge:** Approx. £500 – invoiced on an ad hoc basis

**Local Authority:** Islington Council

**Council Tax Band:** G



### *Chestertons Islington Sales*

327-329 Upper Street

Islington

London

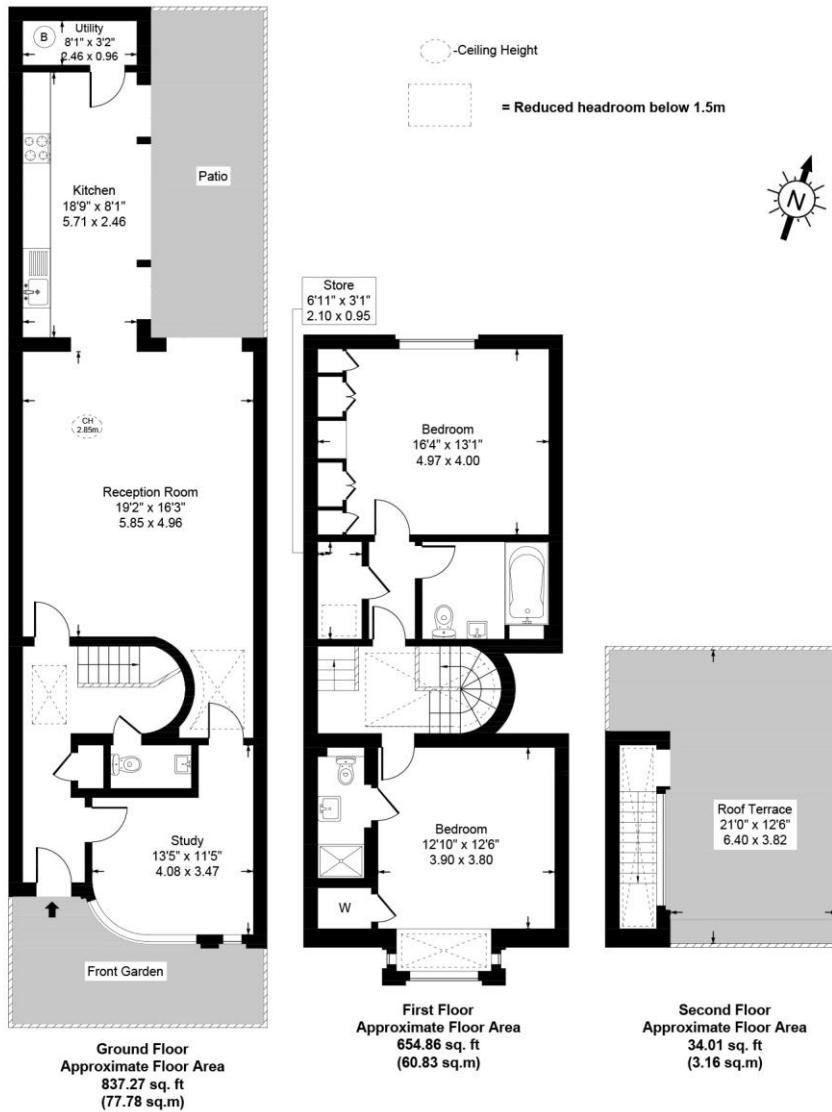
N1 2XQ

islington@chestertons.co.uk

020 7359 9777

chestertons.co.uk

# The Mews, N1



Approx Gross Internal Area **1526 Sq Ft - 141.78 Sq M (Excluding Restricted Headroom )**

For Illustration Purposes Only - Not To Scale

