



Three Farthings, Rotsea Lane,
Cranswick, YO25 9QF
£850,000

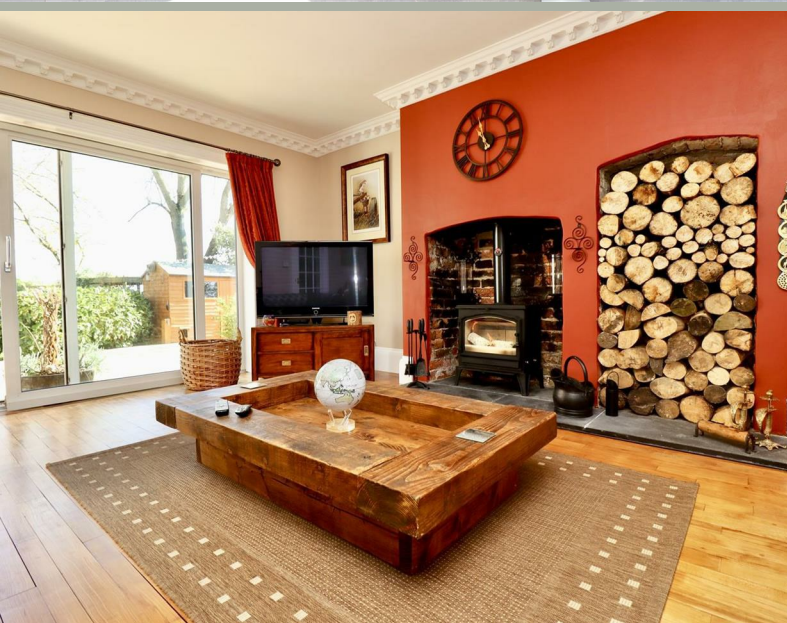


ABOUT THE PROPERTY

Set within a peaceful rural setting and surrounded by open countryside, this exceptional six-bedroom detached home offers an outstanding blend of space, character, and modern living. Beautifully presented throughout and thoughtfully upgraded by the current owners, the property provides generous and versatile accommodation, ideal for growing families or those seeking multi-functional living, including potential bed and breakfast use. At its heart is an impressive extended open-plan kitchen and family area, featuring a large central island, expansive windows overlooking the garden, skylights, and a stylish media wall, perfect for both everyday living and entertaining. The ground floor also includes a spacious sitting room with a log-burning stove, snug with its own staircase to the first floor, a formal dining room, office, utility room, WC, and a welcoming entrance hall with an elegant oak staircase. Upstairs, there are six well-proportioned bedrooms, complemented by an en-suite and two additional bathrooms. Externally, the property truly comes into its own with a large Indian stone patio ideal for outdoor dining, an extensive lawn with mature trees and established hedging offering a high degree of privacy, and beautiful open views across surrounding farmland. Further benefits include gated access, ample parking via a block-paved driveway, a garage with loft space, and a charming garden pond that enhances the sense of tranquillity.

East Riding of Yorkshire Council BAND:F. Tenure: Freehold.







THE ACCOMMODATION COMPRISES

ENTRANCE HALL

Solid oak front entrance door, wooden veneer flooring, two radiators, an oak staircase leading to the first floor with a cupboard underneath, and ceiling coving.

SITTING ROOM

6.49m x 5.28m (21'3" x 17'3")

Solid oak front entrance door, wooden veneer flooring, two radiators, an oak staircase leading to the first floor with a cupboard underneath, and ceiling coving.

OPEN PLAN KITCHEN/FAMILY ROOM

8.04m max x 10.60m (26'4" max x 34'9")

The kitchen is fitted with a range of solid oak wall and base units with quartz worktops. A large island unit includes an inset sink with a Quooker boiling tap, integrated dishwasher and fridge, under-counter bins, and a breakfast bar. There is a Rangemaster cooker set within an alcove with cupboards to either side. The room has recessed ceiling lights, two skylights, and windows overlooking the garden. The flooring is porcelain tiled with underfloor heating, and there is surround sound in the family area.

UTILITY

2.14m x 3.98m (7'0" x 13'0")

Fitted wall and base units with work surfaces, a single drainer sink unit, plumbing for an automatic washer, and ceiling coving.

WC

Two piece white suite, comprising of a low flush WC, pedestal wash hand basin, ceiling coving, radiator.

DINING ROOM

3.77m x 4.34m (12'4" x 14'2")

Laminate flooring, ceiling coving, radiator, and a gas fire with a stone-effect hearth and surround.

SNUG

4.59m max x 4.34m (15'0" max x 14'2")

Gas fire with a stone-effect hearth and surround, ceiling coving, laminate flooring, wall light points, a radiator, and stairs to the first floor.

FIRST FLOOR ACCOMMODATION

LANDING

Ceiling coving, radiator.

BEDROOM ONE

4.56m x 5.28m (14'11" x 17'3")

Two radiators, picture rail, recessed ceiling lights, door leading to Juliet balcony.

EN SUITE

Three-piece white suite comprising a walk-in shower cubicle with waterfall shower, wash hand basin, and low-level flush

WC. Beautifully fitted cupboards with a matching mirror, underfloor heating, fully tiled walls and floor, and a chrome heated towel rail.

BEDROOM TWO

3.75m x 5.26m (12'3" x 17'3")

Radiator, ceiling coving, access to roof space.

BEDROOM THREE

3.64m x 5.32m max (11'11" x 17'5" max)

Two radiators, ceiling coving.

BATHROOM

Three-piece suite comprising a corner bath, low-level flush WC, and pedestal wash hand basin, with a chrome heated towel rail, part-tiled walls, ceiling coving, and laminate flooring.

BEDROOM FOUR

3.45m x 4.39m (11'3" x 14'4")

Radiator, ceiling coving.

BEDROOM FIVE

2.64m x 3.64m (8'7" x 11'11")

Radiator, ceiling coving.

BEDROOM SIX

2.76m x 2.43m (9'0" x 7'11")

Radiator, access to roof space.

BATHROOM

Three-piece white suite comprising a copper roll-top bath, low-level flush WC, and wash hand basin with beautifully fitted cupboards and a matching mirror. Ceiling coving, recessed ceiling lights, tiled floor, a traditional radiator, and a fitted cupboard housing the hot water cylinder.

OUTSIDE

The outdoor space is a standout feature, offering privacy and tranquillity in a beautiful rural setting. A generous Indian stone patio is perfect for outdoor dining, leading onto an extensive lawn bordered by mature trees and hedging, with open views across the countryside. Additional benefits include a charming garden pond, gated access, ample block-paved parking, and a garage with loft storage.

GARAGE

5.58m x 5.68m (18'3" x 18'7")

Up and over door, rear door, power and light, loft/storage area.

ADDITIONAL INFORMATION

SERVICES

Mains water, electricity, oil-fired heating with bunded oil tank, air-fed septic system, owned solar panels with battery storage (off-grid), Starlink internet, and EV charging point.

APPLIANCES

No appliances have been tested by the agent.





VIEWING

By appointment with the Agent.

OPENING HOURS

9 am to 5.30 pm Monday to Friday and 9 am to 3 pm Saturday

FREE VALUATIONS FOR SALE

If you are considering selling or letting your property, we offer a free, no obligation valuation service and would be pleased to discuss your individual requirements with you. Please ring 01430 874000 for further information or to arrange for one of our Valuers to call.

MATERIAL INFORMATION

For broadband coverage, prospective occupants are advised to check the Ofcom website:- <https://checker.ofcom.org.uk/en-gb/broadband-coverage>. For mobile coverage, prospective occupants are advised to check the Ofcom website:- <https://checker.ofcom.org.uk/en-gb/mobile-coverage>

We may receive a commission, payment, fee, or other reward or other benefit (known as a Referral Fee) from ancillary service providers for recommending their service to you. Details can be found on our website.

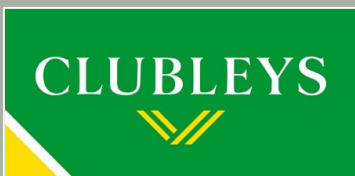
MORTGAGES

We are keen to stress the importance of seeking professional Mortgage advice and would recommend that an appointment be made to see Faye Rowland (Holmefield Financial Solutions), Mortgage and Protection Advisor by phoning her on 07540 536891 or e-mail Faye@holmefieldsolutions.co.uk or by contacting any member of staff. A broker fee of £199 will be charged on application. Your home may be repossessed if you do not keep up repayments on your mortgage. Holmefield Financial Solutions is an appointed representative of First Complete Ltd., which is authorised and regulated by the Financial Conduct Authority.

Please note that this floor plan is not to scale and is only intended as a guide to layout. All measurements provided are approximate and for guidance purposes only. If there is any point which is of a particular importance to you, please contact the office and we will be pleased to check the information, particularly if you contemplate travelling some distance to view the property.

AGENTS NOTES

For clarification, we wish to inform prospective purchasers that we have not carried out a detailed Survey, nor tested the services, appliances and specific fittings for this property.



60 - 64 Market Place, Market
Weighton, York, YO43 3AL
01430 874000
mw@clubleys.com
www.clubleys.com

Energy Efficiency Rating		Current	Potential
Very energy efficient - lower running costs			
(92 plus)	A		
(81-91)	B		86
(69-80)	C	76	
(55-68)	D		
(39-54)	E		
(21-38)	F		
(1-20)	G		
Not energy efficient - higher running costs			
England & Wales		EU Directive 2002/91/EC	

Clubleys give notice that these particulars whilst believed to be accurate are set out as a general outline only for guidance and do not constitute any part of an offer or contract. Intending purchasers or tenants should not rely on them as statements or representation of fact, but must satisfy themselves by inspection or otherwise as to their accuracy. No person in the employment of Clubleys has the authority to make or give any representation or warranty in relation to the property.

Photograph disclaimer – In order to capture the features of a particular room we will mostly use wide angle lens photography. This will sometimes distort the image slightly and also has the potential to make a room look larger. Please, therefore, refer also to the room measurements detailed within this Brochure.