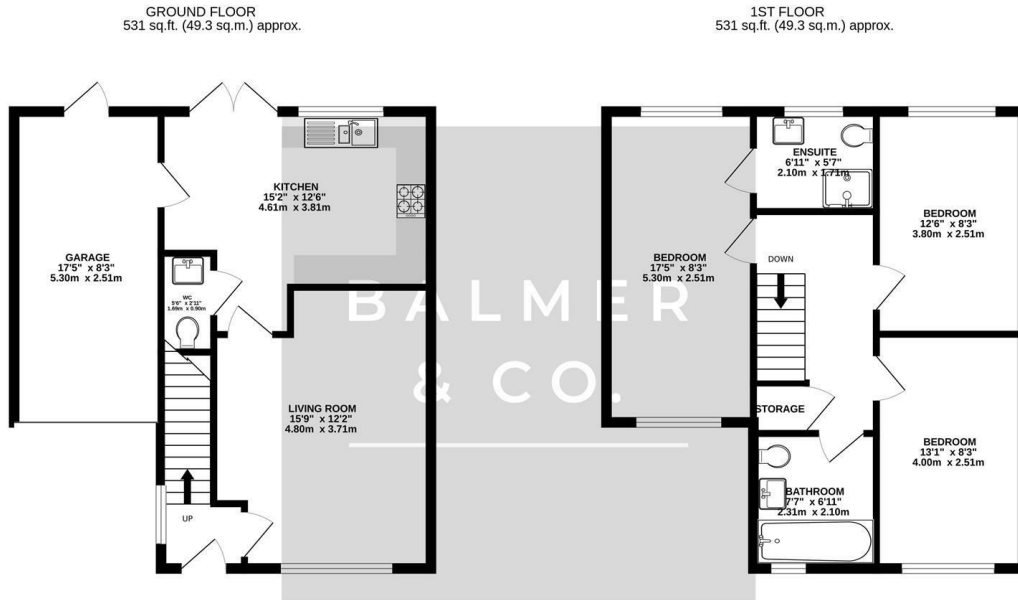


Bridgedale Road, Leigh, WN7 5DB
£300,000



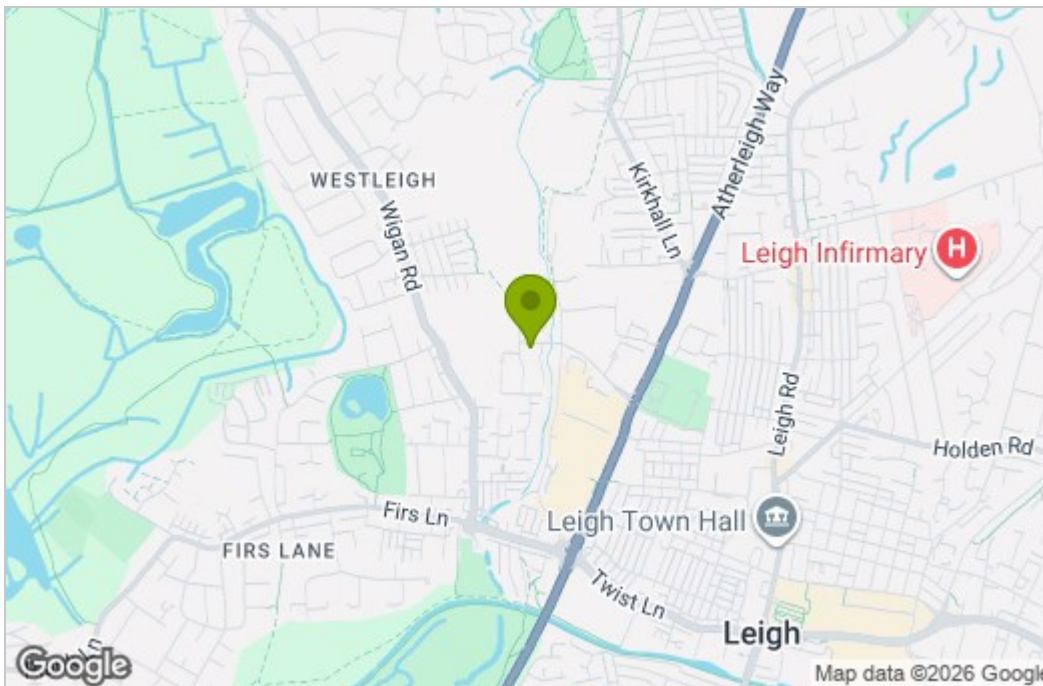
BALMER & CO in LEIGH are delighted to offer FOR SALE this fantastic three bedroom detached house situated in a popular and well regarded residential location in Leigh. Offered with NO ONWARD CHAIN this property offers spacious living accommodation and will make an excellent family home. Comprising in brief of entrance hallway, large living room, modern fitted kitchen with integrated appliances, W.C, with an integral garage with electric door completing the ground floor. To the first floor is a large master bedroom with ensuite shower room, two further well proportioned double bedrooms, with a three piece family bathroom completing the accommodation on offer. Externally the property is garden fronted with a driveway providing off-road parking, whilst to the rear there is a nicely landscaped, fully enclosed, South facing garden with external summerhouse and hot tub which is included in the sale. Early viewings highly recommended, all enquiries welcome.

Floor Plan

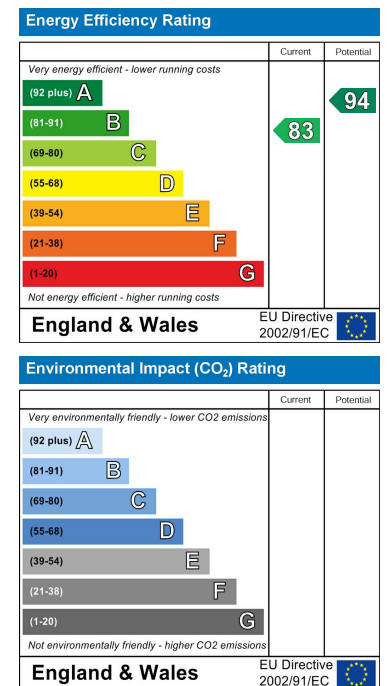


TOTAL FLOOR AREA : 1061 sq.ft. (98.6 sq.m.) approx.
 Whilst every attempt has been made to ensure the accuracy of the floorplan contained here, measurements of doors, windows, rooms and any other items are approximate and no responsibility is taken for any error, omission or mis-statement. This plan is for illustrative purposes only and should be used as such by any prospective purchaser. The Services, systems and appliances shown have not been tested and no guarantee as to their operability or efficiency can be given.
 Made with Metropix ©2026

Area Map



Energy Efficiency Graph



These particulars, whilst believed to be accurate are set out as a general outline only for guidance and do not constitute any part of an offer or contract. Intending purchasers should not rely on them as statements of representation of fact, but must satisfy themselves by inspection or otherwise as to their accuracy. No person in this firm's employment has the authority to make or give any representation or warranty in respect of the property.