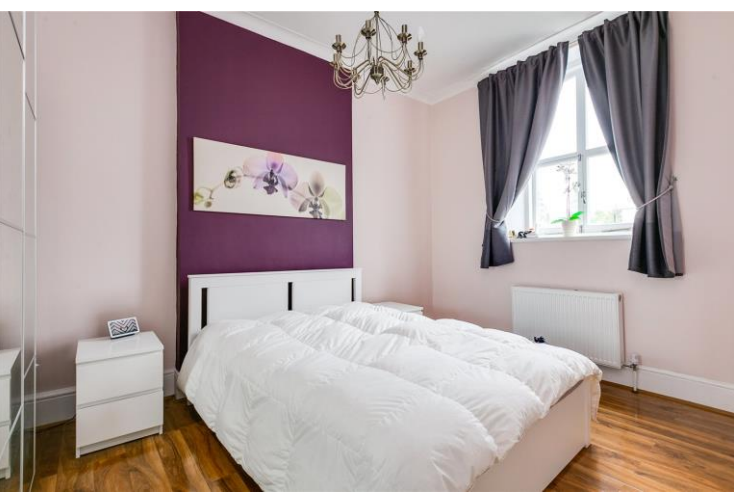




Old Brompton Road  
South Kensington, SW7

CHESTERTONS





A smart two bedroom (one double) 3rd floor (with lift) apartment in this converted building in South Kensington, opposite the tube station and close to great amenities and museums.

- Greatly positioned two bedrooms apartment on the 3rd floor (with lift) in the Heart of South Kensington
- One double bedroom, one single bedroom, family bathroom, separate kitchen, reception room
- Benefiting from a recent refurbishment, high ceilings, a lift, wooden floors all throughout

### £3,000 pcm

Additional tenant charges apply (fees apply to non-AST tenancies only)

Tenancy Agreement Fee: £300

References per Tenant/Guarantor: £60

Inventory check (approx. £100 – £250 inc. VAT)

[chestertons.co.uk/property-to-rent/applicable-fees](http://chestertons.co.uk/property-to-rent/applicable-fees)

Energy Efficiency Rating		Current	Potential
90-100	A		
81-89	B		
72-80	C	69	78
63-71	D		
54-62	E		
45-53	F		
35-44	G		

Not energy efficient - higher running costs

England, Scotland & Wales EU Directive 2002/91/EC

**Minimum Term:** 12 months  
**Deposit Required:** £3,461.54  
**Local Authority:** Kensington and Chelsea  
**EPC Rating:** C  
**Furnished**

*Chestertons South Kensington Lettings*

44-48 Old Brompton Road  
 South Kensington  
 London  
 SW7 3DY

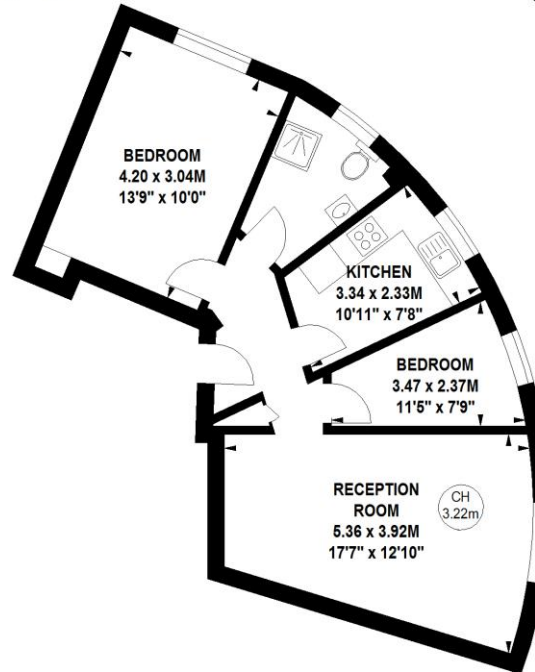
[southkensingtonlettingsusers@chestertons.co.uk](mailto:southkensingtonlettingsusers@chestertons.co.uk)  
 02075891244

## Egerton Court, SW7

Approximate gross internal area

53.05 sq m / 571 sq ft

Key :  
CH - Ceiling Height



### Fourth Floor

The floor plan is not to scale and measurements and areas shown are approximate and therefore should be used for illustrative purposes only.

The plan has been prepared in accordance with the RICS code of Measuring Practice and whilst we have confidence in the information produced, it must not be relied on.

If there is any aspect of particular importance, you should carry out or commission your own inspection of the property.

Copyright of FeaturePRO.

