



Living  
made  
better

Park Vista Apartments  
Canning Town, E16 4LG



£2,450 PCM

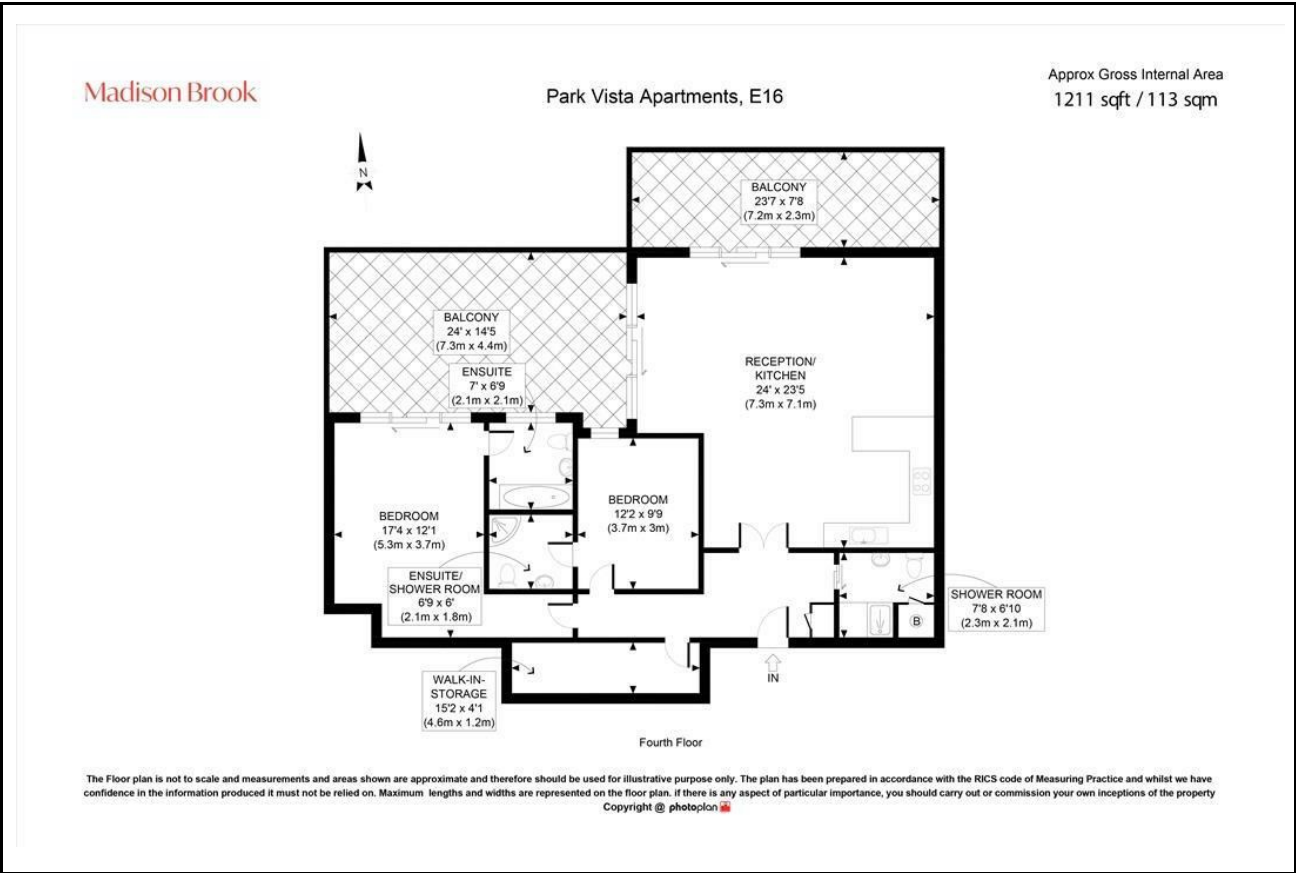
# Park Vista Apartments, Canning Town, E16 4LG

Madison Brook

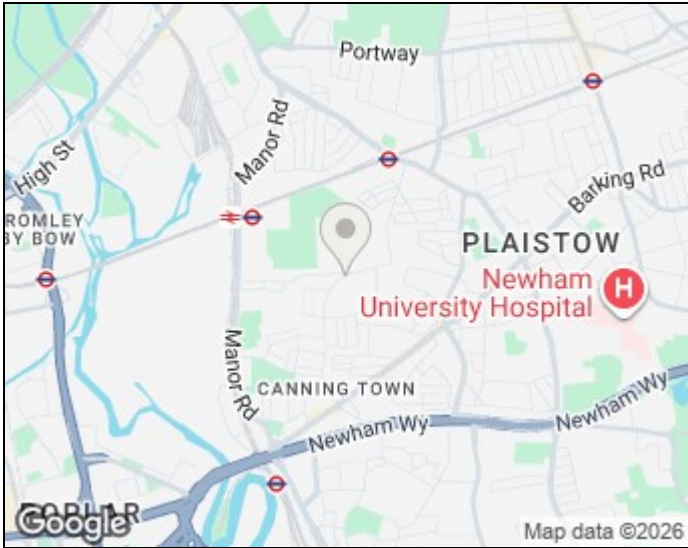
## Property Summary

A spacious two-bedroom apartment in Park Vista Apartments offering over 1,200 sq ft of internal space and two large private terraces with impressive views towards Stratford, Canary Wharf and The Shard. The property features a bright open-plan reception and kitchen, two en-suite bedrooms plus an additional shower room, and underfloor heating throughout. Underground parking is included, and furniture is optional. Ideally located close to West Ham Underground Station. Available immediately.

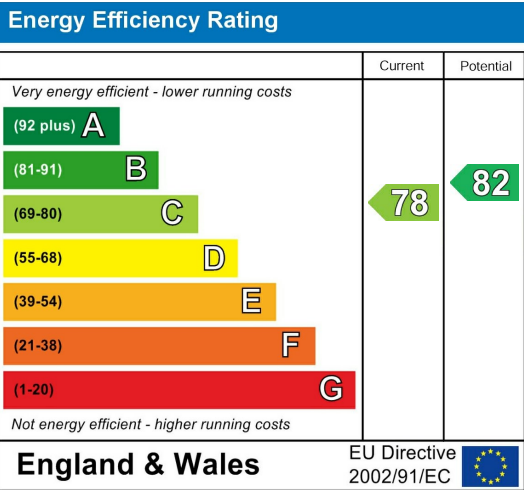
## Floorplan



## Area Map



## Energy Efficiency Graph



These particulars, whilst believed to be accurate are set out as a general outline only for guidance and do not constitute any part of an offer or contract. Intending purchasers should not rely on them as statements of representation of fact, but must satisfy themselves by inspection or otherwise as to their accuracy. No person in this firms employment has the authority to make or give any representation or warranty in respect of the property.

Unit B 20 Western Gateway, Royal Victoria  
Dock, London, E16 1BS  
Tel: 020 3946 6000 Email:  
docklands@madisonbrook.com  
<https://madisonbrook.com/>