

OFFERS IN EXCESS OF

£530,000

Havelock Road

, BR2 9NZ

PROPERTY SUMMARY

Sinclair Hammelton are proud to bring to the market this charming three bedroom terraced house situated on a desirable residential road. Conveniently located approximately 0.7 miles from both Bromley South and Bickley stations, the property is also close to Chatterton Village with its array of independent shops, cafés and restaurants, as well as nearby parks and the highly regarded Raglan Primary School.

The living accommodation comprises an entrance porch, hallway leading to a bright and spacious open-plan living/dining area with feature bay window and decorative coving. There is also a fully fitted kitchen, bathroom and utility/lean-to.

To the first floor there are three double bedrooms with a spacious landing.

Externally, there is a private south-westerly facing mature garden, beautifully maintained and mainly laid to lawn with a patio seating area. To the front of the property there is a driveway offering off-street parking.

Viewing highly recommended.

3



1



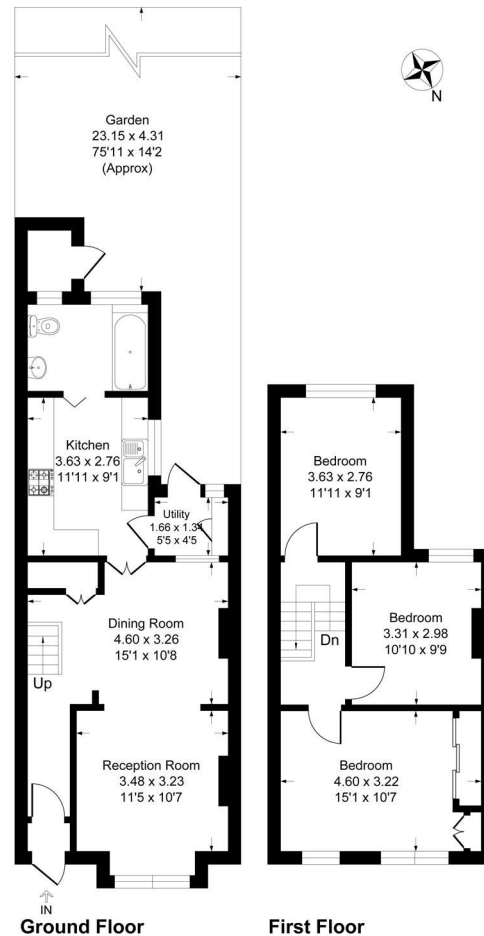
2





Havelock Road, BR2

Approximate Gross Internal Area 93.3 sq m / 1005 sq ft



This plan is for layout guidance only. Not drawn to scale unless stated. Windows and door openings are approximate. Whilst every care is taken in the preparation of this plan, please check all dimensions, shapes and compass bearings before making any decisions reliant upon them.
Produced By Planity



LOCAL AUTHORITY

TENURE

Freehold

EPC RATING

C

COUNCIL TAX BAND

D

VIEWINGS

By prior appointment only

Energy Efficiency Rating		Current	Potential
<i>Very energy efficient - lower running costs</i>			
(92 plus) A			
(81-91) B			
(69-80) C		69	80
(55-68) D			
(39-54) E			
(21-38) F			
(1-20) G			
<i>Not energy efficient - higher running costs</i>			
England & Wales		EU Directive 2002/91/EC	

Agents Note: Whilst every care has been taken to prepare these particulars, they are for guidance purposes only. All measurements are approximate and are for general guidance purposes only and whilst every care has been taken to ensure their accuracy, they should not be relied upon and potential buyers/tenants are advised to recheck the measurements



OFFICE ADDRESS

23 High Street
Bromley
Kent
BR1 1LG

OFFICE DETAILS

0208 464 5566
info@sinclairhammelton.co.uk
<https://www.sinclairhammelton.co.uk>
for-sale-in-bromley/