

SNELLERS

ESTATE AGENTS



Arlington Road, TW1

£4,250 PCM

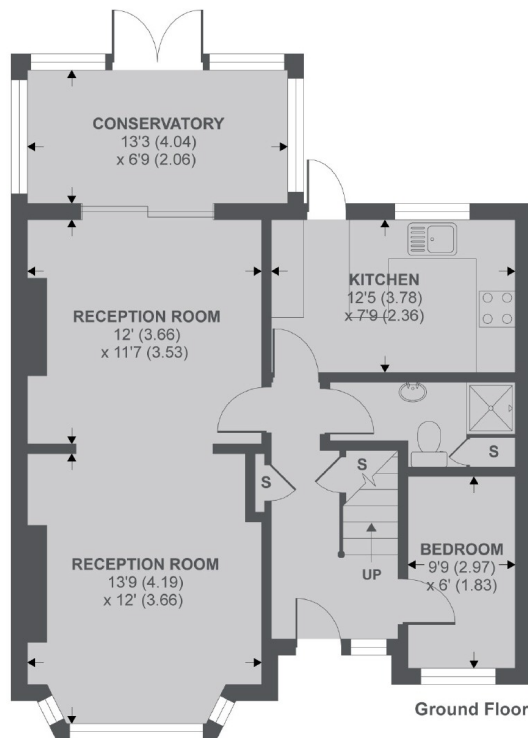
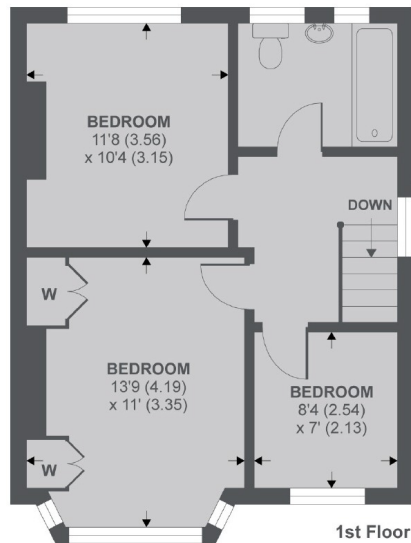
This four bedroom, two bathroom family home in the heart of St Margarets has a large through reception / diner, a separate kitchen and a conservatory leading to a lovely mature rear garden.

Arlington Road 0.3 miles from St Margarets village for a selection of boutique shops, cafes, restaurants and the overground station whilst also offering easy access to a number of riverside walks and Richmond town centre.

- Four Bedroom House • Two Bathrooms • Large Garden •
- Off-Street Parking • Unfurnished • Great Location •

SNELLERS

ESTATE AGENTS



APPROX FLOOR AREA 1161 SQ.FT 107.9 SQ.M

Copyright nichecom.co.uk 2019 REF : 477612

Snellers St. Margarets Lettings
36 Crown Road
St Margarets
TW1 3EH
020 8892 0700
stmargaretslettings@snellers.co.uk

Energy Rating: D We aim to make our particulars both accurate and reliable. However they are not guaranteed; nor do they form part of an offer or contract. If you require clarification on any points then please contact us, especially if you're traveling some distance to view. Please note that appliances and heating systems have not been tested and therefore no warranties can be given as to their good working order