



TELFORD AVENUE, SW2

£2,350 PCM

- First floor maisonette
- Large reception room
- Modern fitted kitchen
- Three bedrooms
- Close to Balham Station
- Energy rating: D



3



1



1





## ABOUT THE HOME

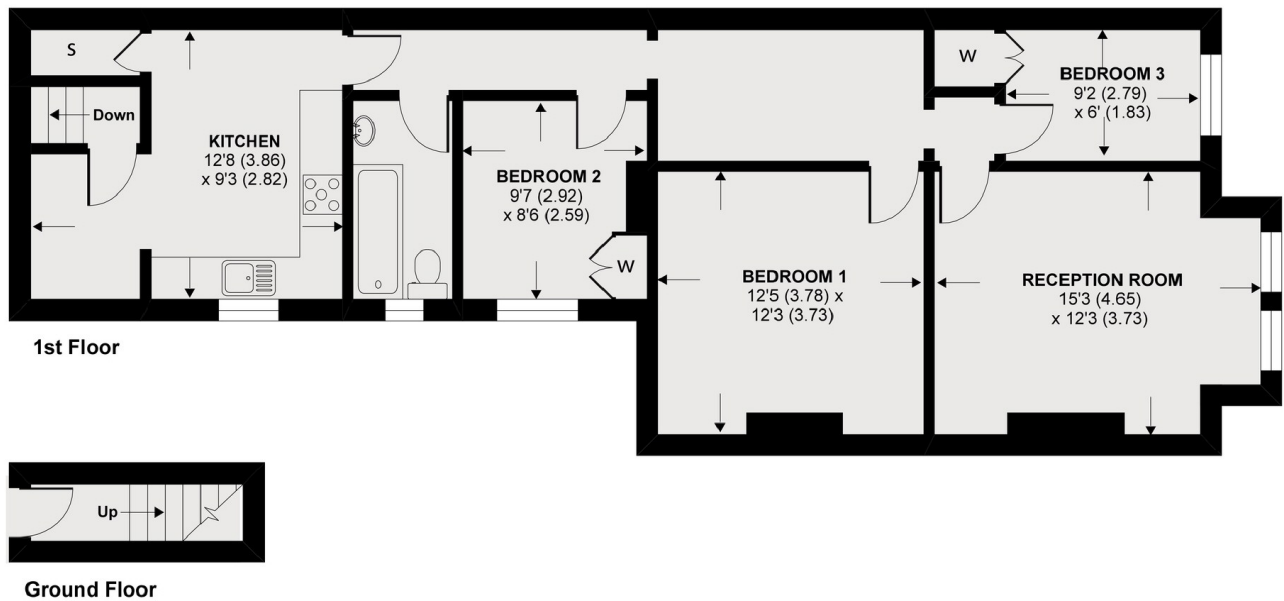
A three bedroom first floor maisonette with a benefitting from a private garden. This property would be suitable for a professional couple or family.

Telford Avenue is a quiet residential road conveniently close to the open spaces of Tooting Bec common, Balham underground and mainline stations are within easy reach as are the local shops and amenities along Balham and Streatham High Roads.









APPROX. GROSS INTERNAL FLOOR AREA 907 SQ FT 84.2 SQ METRES  
 Copyright nichecom.co.uk 2020 REF : 000000

### JACKSONS BALHAM

8-11 Balham Station Road,  
 London, SW12 9SG  
 Sales: 020 8675 6555  
 Lettings: 020 8675 6565

Energy Rating: C We aim to make our particulars both accurate and reliable. However they are not guaranteed; nor do they form part of an offer or contract. If you require clarification on any points then please contact us, especially if you're traveling some distance to view. Please note that appliances and heating systems have not been tested and therefore no warranties can be given as to their good working order.