



Eltringham Street
London, SW18

CHESTERTONS





A well-presented one bedroom apartment set on the third floor of a desirable gated development.

The property boasts neutral décor throughout including Karndean flooring, a secure allocated parking space (secure allocated parking available by separate negotiation) and contemporary fittings. The front door to the apartment is located off a well-maintained communal hallway and once inside there is an entrance hall with handy storage cupboards.

The accommodation comprises a contemporary open plan kitchen/reception room with integrated appliances and Granite work surfaces, double bedrooms with fitted wardrobes and a bathroom with fitted suite. The property further benefits from access to a communal roof terrace and an entry phone system.

The apartment is located within a short walk of Wandsworth Town mainline station with access to Clapham Junction, and Waterloo and the amenities of the Tonsleys, Fulham and Wandsworth Common.

- One Bedroom
- 3rd floor
- Open plan
- Private parking
- Modern gated development

Offers in excess of
£350,000

Energy Efficiency Rating		Current	Potential
90-100	A		
81-90	B		
69-81	C	81	81
55-69	D		
39-55	E		
21-39	F		
1-21	G		

Not energy efficient - higher running costs

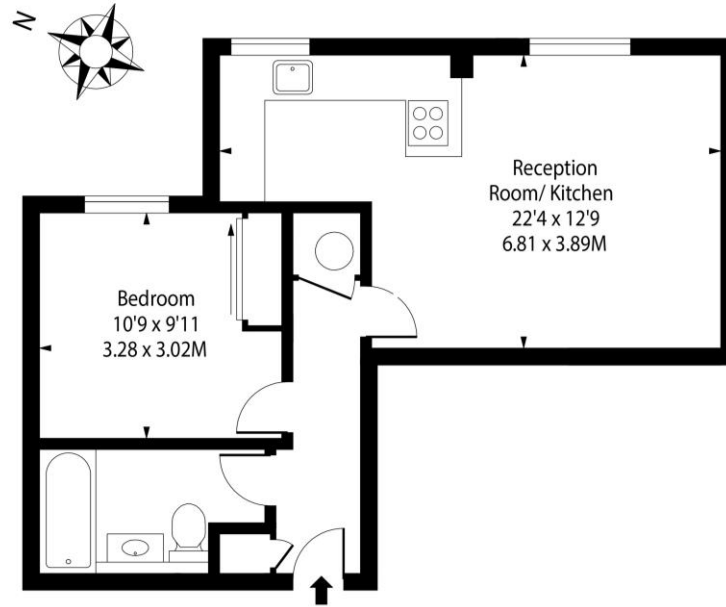
England, Scotland & Wales EU Directive 2002/91/EC

Tenure: Leasehold 106 years 7 months
Service Charge: £4,330 Per Annum
Ground Rent: £400 Per Annum
Local Authority: London Borough of Wandsworth
Council Tax Band: D

Chestertons Battersea Park & Nine Elms Sales

62-64 Battersea Bridge Road
 London
 SW11 3AG
 batterseapark@chestertons.co.uk
 0203 040 8700
 chestertons.co.uk

Charterhouse Apartments, SW18



Third Floor

Approx Gross Internal Area **480 Sq Ft - 44.59 Sq M**

Drawn in accordance with IPMS 3B: Residential

For Illustration Purposes Only - Not to Scale

Ref: No. 43911



Chesterton UK Services Limited trading as Chestertons for themselves and for the vendor of this property whose agents they are, give notice that (i) these particulars do not constitute any part of an offer or contract, (ii) all statements contained within these particulars are made without responsibility on the part of Chestertons or the vendor, (iii) whilst made in good faith, none of the statements contained within these particulars are to be relied upon as a statement or representation of fact, (iv) any intending purchasers must satisfy themselves by inspection or otherwise as to the correctness of each of the statements contained within these particulars, (v) the vendor does not make or give either Chestertons or any person in their employment any authority to make or give representation or warranty whatsoever in relation to this property. Wide angle lenses may be used. ©Copyright Chestertons | Chesterton UK Services Limited | Registered Office 5th Floor, The Lantern, 75 Hampstead Road, London, NW1 2PL Registered Company Number 05334580.



This paper is
100% recyclable