



Orbel Street, SW11

£1,799,995

Dexters



Orbel Street, SW11

A beautiful, fully extended, four double bedroom Victorian home measuring over 2,000 Sq Ft including eaves. Located on the popular Orbel Street, this property also benefits from an extended eat-in kitchen and private garden.

A beautiful, fully extended, five double bedroom Victorian home measuring circa 2,000 Sq Ft including eaves. Located on the popular Orbel Street. Comprising a double reception room, an extended eat-in kitchen, two bathrooms and separate WC. There is a side door which can be used as a secondary entrance and provides access to additional utility room. The property also benefits from a private garden, underfloor heating and has been refurbished to an immaculate standard.

Clapham Junction station is also a short walk away and the location benefits from being in the catchment of some of the best schools including Thomas's Battersea.

Orbel Street is a sought after road near Battersea Park and the iconic Battersea Power Station within an area known as the 'Sisters' in Battersea. Located conveniently for easy access to Clapham Junction while also being close to Kings Road in Chelsea and Sloane Square.

Features

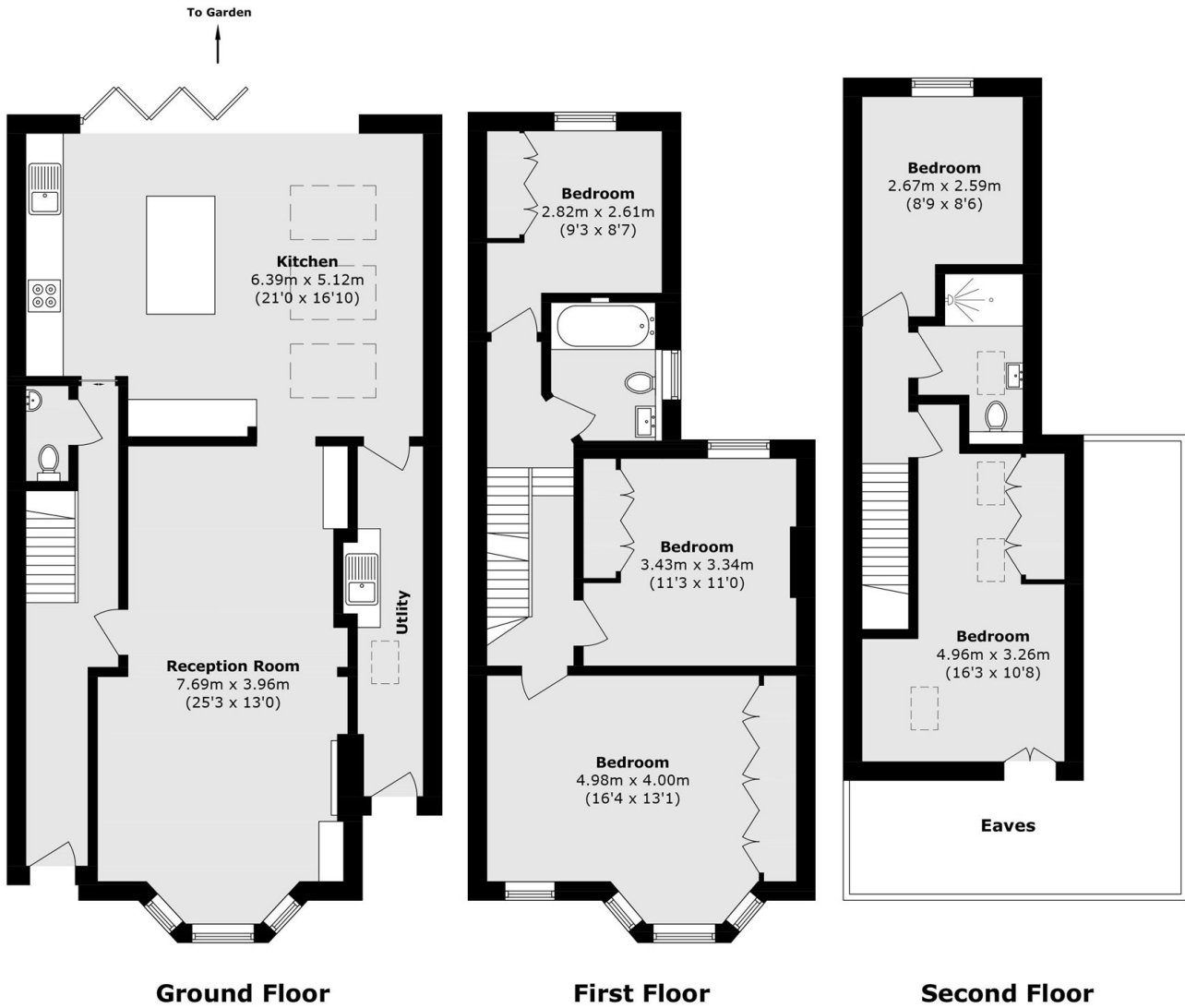
- Victorian Freehold
- Double Reception Room
- Five Double Bedrooms
- Two Bathrooms & W/C
- Private Garden
- Superb Location







Orbel Street, London, SW11



Total area (approx.): 158.8 sq. m (1709.3 sq. ft)
(Excluding Eaves)