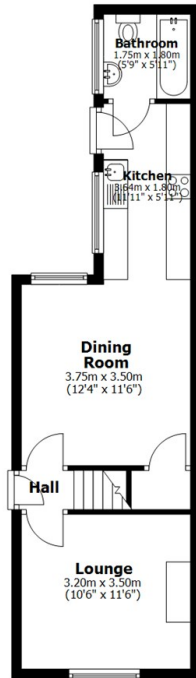


36 Oakfield Street, Lincoln, LN2 5LU

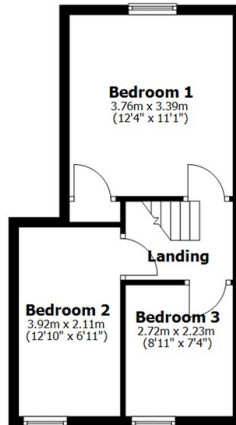
Asking Price £155,000

- Three Bedroom Terraced House
- Downstairs Bathroom
- Close to Shops and Schools
- EPC Rating C
- Two Reception Rooms
- Newly Decorated and New Carpets
- No Onward Chain
- Fitted Kitchen
- Gas Central Heating
- Council Tax Band A

Ground Floor
Approx. 37.9 sq. metres (408.2 sq. feet)

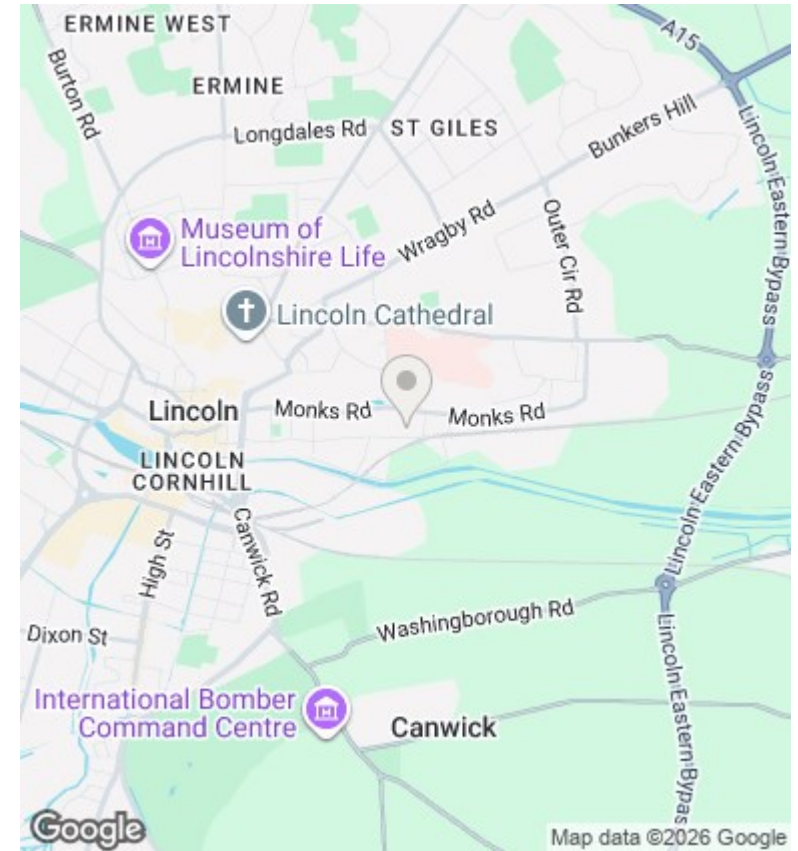


First Floor
Approx. 32.3 sq. metres (347.6 sq. feet)



Total area: approx. 70.2 sq. metres (755.8 sq. feet)

This plan is for layout guidance only. Not drawn to scale unless stated. Windows and door openings are approximate. Whilst every care is taken in the preparation of this plan, please check all dimensions, shapes and any compass bearings before making any decisions reliant upon them. All interested parties must verify their accuracy independently.
Plan produced using PlanUp.



Directions

Viewings

Viewings by arrangement only. Call 01522 396059 to make an appointment.

Council Tax Band

B

EPC Rating:

C

Energy Efficiency Rating		Current	Potential
<i>Very energy efficient - lower running costs</i>			
(92 plus) A			89
(81-91) B			
(69-80) C		70	
(55-68) D			
(39-54) E			
(21-38) F			
(1-20) G			
<i>Not energy efficient - higher running costs</i>			
England & Wales		EU Directive 2002/91/EC	