



Norfolk Road, Burton-On-Trent

burchell  
edwards



## Property Description

A stunning Three-Bedroom Semi-Detached Family Home in Stapenhill, Burton

. Available with no upward chain, this beautifully presented three-bedroom semi-detached home has been almost completely renovated throughout to a high standard, making it an ideal purchase for families or first-time buyers alike.

Situated in the highly desirable Stapenhill area of Burton, the property offers spacious and versatile living accommodation, including two separate reception rooms, perfect for both relaxing and entertaining.

The home benefits from a modern fitted kitchen, a contemporary bathroom, and a useful utility room. Externally, there is a generous rear garden, ideal for family living, along with a driveway providing off-road parking.

This fantastic home is ready to move straight into and offers so much more upon viewing.

Contact Burchell Edwards Estate Agents today to arrange your viewing!

## Side Entry

Wooden doors to front and rear elevations.

## Entrance Hallway

Composite door to front elevation, double glazed window, stairs to first floor accommodation and under stairs storage cupboard.

## Wet Room

Double glazed window to side elevation, W.C, wash hand basin, shower, fully tiled walls.

## Lounge

Double glazed bay window to front elevation, central heating radiator and laminate flooring.

## Dining Room

Double glazed French doors to side elevation, central heating radiator and laminate flooring.

## Kitchen

Double glazed window and door to rear elevation, a range of wall and base units with work surface over incorporating a sink with drainer unit, electric oven, gas hob, dishwasher, fridge, freezer and laminate flooring.

## Utility Room

Double glazed window to front elevation, wall and base storage units.



## Landing

Double glazed window to side elevation, loft access and airing cupboard housing central heating boiler.

## Bedroom One

Two double glazed windows to front elevation, central heating radiator and fitted wardrobes.

## Bedroom Two

Two double glazed windows to rear elevation and central heating radiator.

## Bedroom Three

Double glazed window to front elevation and central heating radiator.

## Bathroom

Double glazed window to rear elevation, W.C, wash hand basin, p shaped bath with shower over, heated towel rail and panelling to walls.

## Front Garden

lawned frontage with fencing to the boundaries.

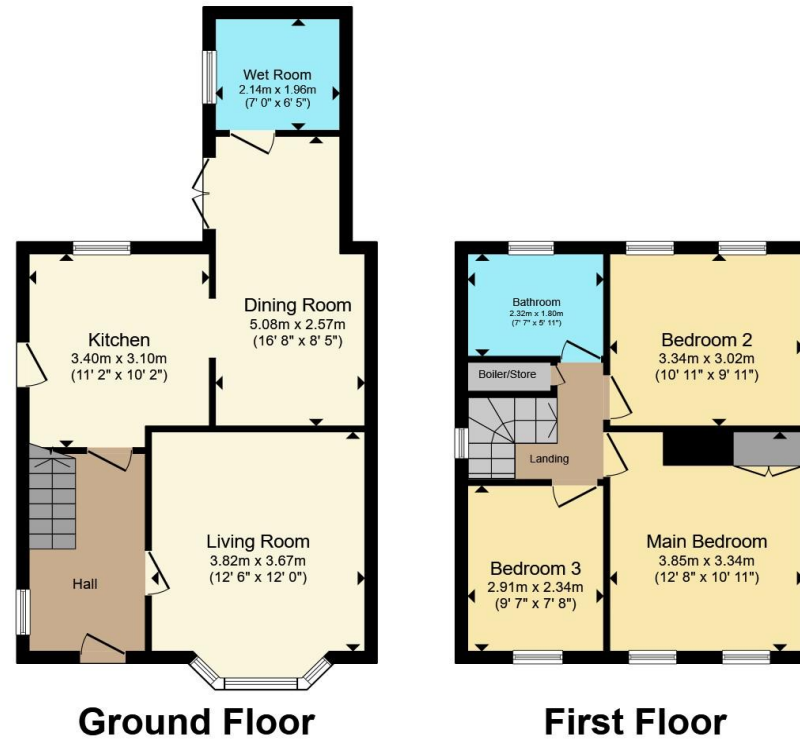
## Front Garden

Lawned garden with side access to frontage.









Total floor area 90.2 m<sup>2</sup> (971 sq.ft.) approx

This floor plan is for illustrative purposes only. It is not drawn to scale. Any measurements, floor areas (including any total floor area), openings and orientation are approximate. No details are guaranteed, they cannot be relied upon for any purpose and they do not form part of any agreement. No liability is taken for any error, omission or misstatement. A party must rely upon its own inspection(s). Powered by [www.propertybox.io](http://www.propertybox.io)



To view this property please contact Burchell Edwards on

**T 01283 530 169**  
**E [burton@burchelledwards.co.uk](mailto:burton@burchelledwards.co.uk)**

Britannia House Station Street  
 BURTON-ON-TRENT DE14 1AN

EPC Rating: D Council Tax  
 Band: B

Tenure: Freehold

**view this property online [burchelledwards.co.uk/Property/BUT210621](http://burchelledwards.co.uk/Property/BUT210621)**



1. MONEY LAUNDERING REGULATIONS Intending purchasers will be asked to produce identification documentation at a later stage and we would ask for your co-operation in order that there will be no delay in agreeing the sale. 2. These particulars do not constitute part or all of an offer or contract. 3. The measurements indicated are supplied for guidance only and as such must be considered incorrect. Potential buyers are advised to recheck measurements before committing to any expense. 4. We have not tested any apparatus, equipment, fixtures, fittings or services and it is in the buyers interest to check the working condition of any appliances.

Burchell Edwards is a trading name of Connells Residential which is registered in England and Wales under company number 1489613, Registered Office is Cumbria House, 16-20 Hockliffe Street, Leighton Buzzard, Bedfordshire, LU7 1GN. VAT Registration Number is 500 2481 05.

**See all our properties at [www.burchelledwards.co.uk](http://www.burchelledwards.co.uk) | [www.rightmove.co.uk](http://www.rightmove.co.uk) | [www.zoopla.co.uk](http://www.zoopla.co.uk)**

Property Ref: BUT210621 - 0002