



PALMERSTON ROAD, SW14

£5,000 per month

4 bedroom, 2 bathroom, 1 w/c
Family home
Private garden
Private balcony
Plenty of storage
Moments from Richmond Park

@marshandparsons
marshandparsons.co.uk

MARSH &
PARSONS



ABOUT THE PROPERTY

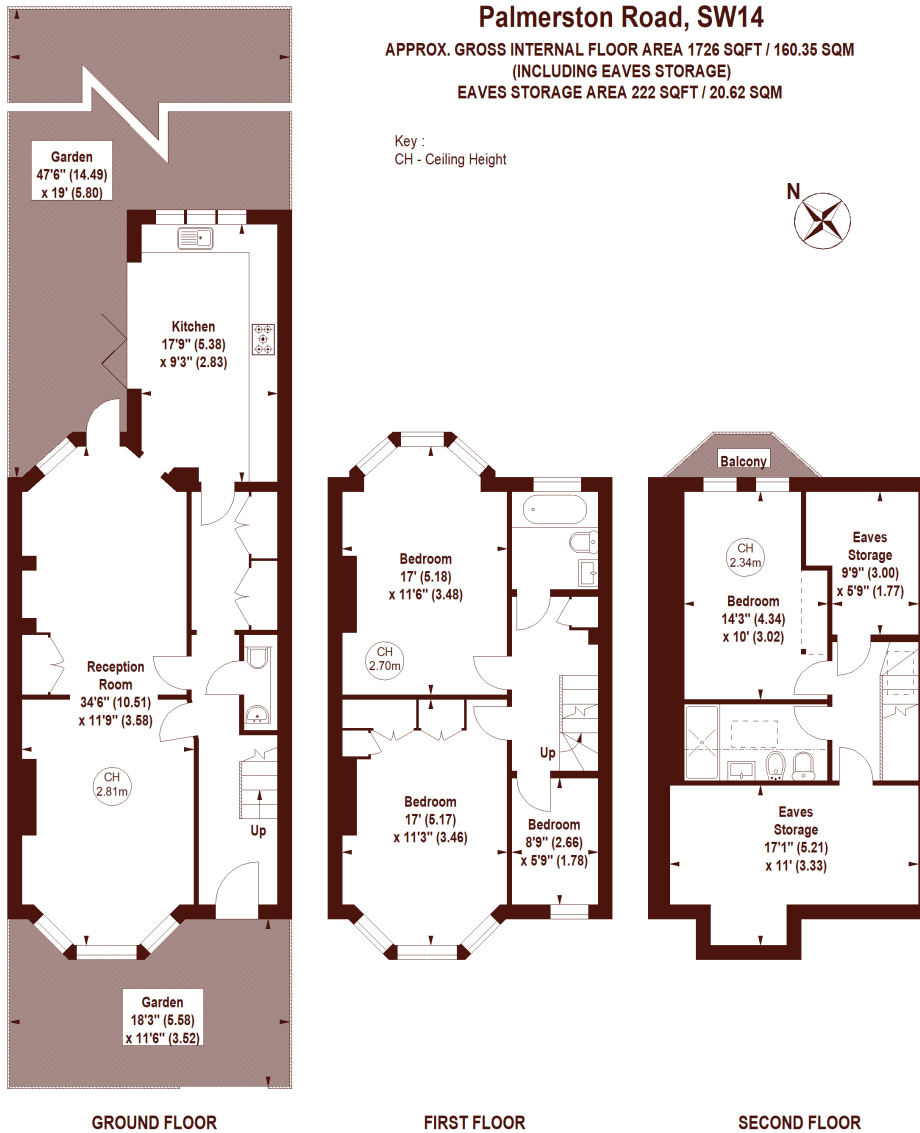
A spacious 4 bedroom family home split over 3 floors down a residential road moments from Richmond Park.

This spacious family house comprises 3 double bedrooms, 1 single room/study, 2 bathroom, 1 w/c, large double reception room, separate fully equipped kitchen leading onto a private garden, utility room, private balcony and plenty of storage.

Palmerston Road is located in the leafy roads of East Sheen, moments from East Sheen Common where you can enjoy a stroll in the park with your furry friend, a child's day out at the Sheen Common Play Area or a competitive game of Tennis or Squash at the local lawn



STEP INSIDE PALMERSTON ROAD



Not to scale, for guidance only and must not be relied upon as a statement of fact.
 All measurements and areas are approximate only

Barnes & East Sheen
 020 8563 8222

Energy Rating: D We aim to make our particulars both accurate and reliable. However, they are not guaranteed; nor do they form part of an offer or contract. If you require clarification on any points then please contact us, especially if you're traveling some distance to view. Please note that appliances and heating systems have not been tested and therefore no warranties can be given as to their good working order

**MARSH &
 PARSONS**