



The Chilterns
Chislehurst Road
Sidcup
DA14 6TS

Share of Freehold

Larger than average 2 bedroom second floor apartment
Double glazing & gas central heating
Ideal first time buy
Chain Free
Share of Freehold
Easy access to Sidcup High Street & bus routes
Walking distance to Sidcup station



FULL DESCRIPTION

Offered chain free is this large, second floor, 2 bedroom balcony apartment with a lease over 900 years and a share of freehold.

The property offers easy access to local shops, schools and transport links and briefly comprises of: A secure communal entrance, front door, entrance hall with storage, cloakroom, lounge with balcony that overlooks the neighbouring parkingland, kitchen, 2 good sized bedrooms and a family bathroom

Externally there is a garage on bloc and communal grounds. *Chain Free*

ADDITIONAL INFORMATION

The following information has been supplied by the vendor and should be verified by the purchaser and /or solicitor prior to exchange of contracts.

Being sold with Share of Freehold.

Lease Duration: 999 years from 24/6/1978 - so 951 years remaining

Service/Maintenance Charge: £1615 per annum - covers services, repairs, improvements, insurance and management costs.

Ground Rent: None

Council Tax: Band C - £2103.43 per annum





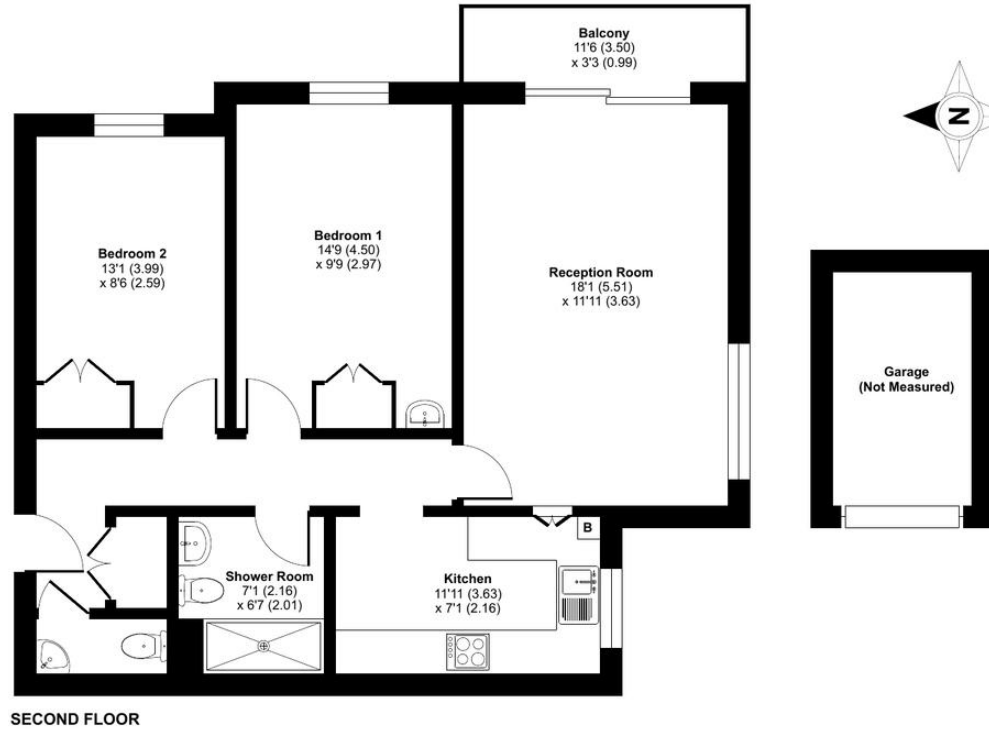
Local Authority
Council Tax Band
EPC Rating

Bexley London Borough Council
C
C

Chislehurst Road, Sidcup, DA14

Approximate Area = 740 sq ft / 68.7 sq m (excludes garage)

For identification only - Not to scale



 Floor plan produced in accordance with RICS Property Measurement Standards incorporating International Property Measurement Standards (IPMS2 Residential). © nitchecom 2026. Produced for Drewery. REF: 1455837

Drewery Property Consultants
128 Station Road
Sidcup
Kent
DA15 7AF

Contact
020 8269 6605
info@drewery.co.uk
www.drewery.co.uk

Agents Note: Whilst every care has been taken to prepare these particulars, they are for guidance purposes only. All measurements are approximate and are for general guidance purposes only and whilst every care has been taken to ensure their accuracy, they should not be relied upon and potential buyers/tenants are advised to recheck the measurements.