



Tradescant Road, SW8

£1,200,000

A fantastic four-bedroom mid-terrace Victorian home benefitting from an abundance of living space. Split over three floors and enjoying plenty of character throughout, the property features two bathrooms and offers fantastic potential for the next buyers to make it their own.

Tradescant Road is a quiet street located just off South Lambeth Road. This well connected location provides a short walk to both Vauxhall and Stockwell stations. There are numerous local shops, restaurants close by as is Vauxhall Park and Albert Square

Features

- Family Home
- Four Bedrooms
- Great Condition
- Character Features
- Quiet Location
- Two Bathrooms



Tradescant Road, SW8

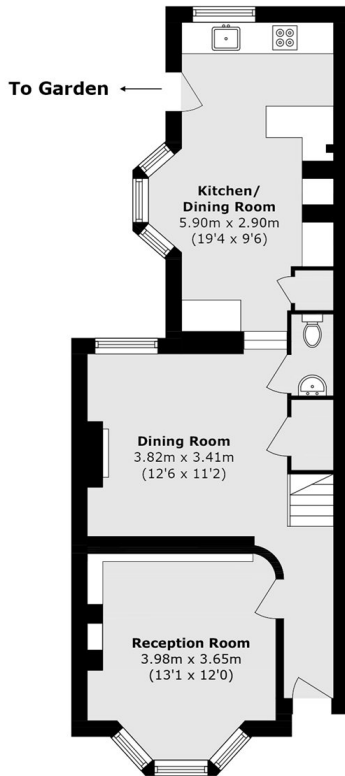
The ground floor offers spacious bay-fronted reception rooms with exposed wooden floors, high ceilings and attractive period detailing. A second reception room provides the perfect space for all the family to come together and flows seamlessly into the spacious kitchen/dining room, complete with a characterful bay window. The timeless shaker-style kitchen is ideal for those who love to cook and enjoys access onto a well-maintained rear courtyard.

The first floor features a generous double bedroom to the front, currently used as a drawing room, alongside two further double bedrooms served by a modern shower room. The second floor is dedicated to the impressive principal bedroom, which benefits from a walk-in wardrobe and an ensuite bathroom with both a bath and separate shower.

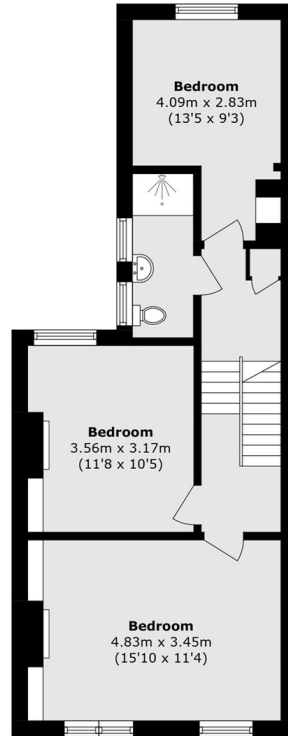
This much-loved family home is packed full of character and charm, with a layout that offers both practicality and versatility.



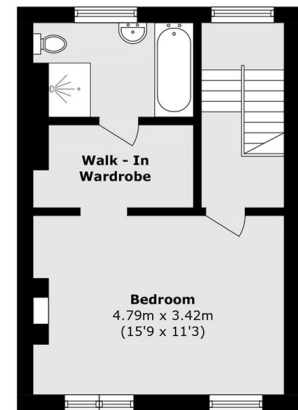
Tradescant Road, London, SW8



Ground Floor



First Floor



Second Floor

Total area (approx.): 139.2 sq. m (1498.3 sq. ft)