

MUNDAY'S

Crystal Palace Road, East Dulwich

£550,000



Two bedroom Victorian conversion apartment of 664 square feet, with its own front door and own private garden (with welcome direct access and side access too). Chain free.

Ready for you in February, your new home is just one of just four in this delightful boutique development, with a new long lease. It is set to the lower ground floor of a smart, bay-fronted semi-detached townhouse, on a popular East Dulwich residential street.

You are close to Lordship Lane and North Cross Road, and to two wonderful green spaces: Dulwich Park and Peckham Rye Park and Common. East Dulwich Station (Zone 2) is a circa 15 minute walk.

Munday's Estate Agents Ltd.
2 Mary Boast Walk
London SE5 8SP
020 3318 8900

www.mundays.com

MUNDAY'S

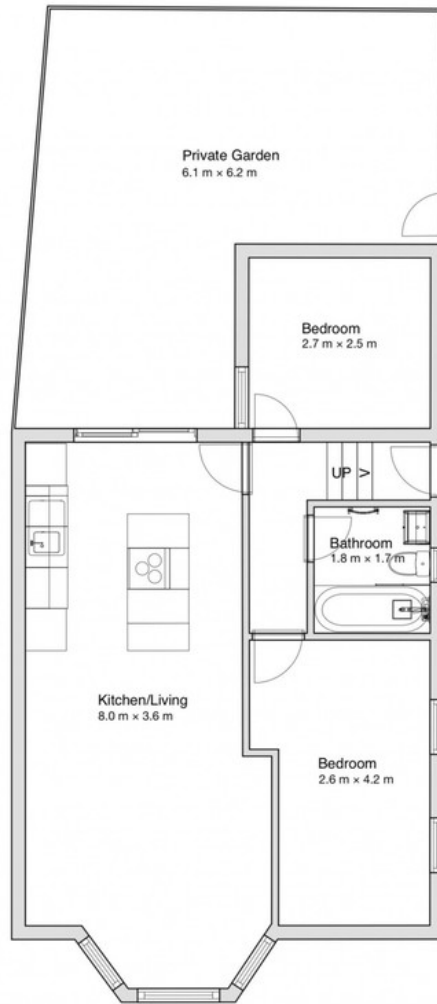


Munday's Estate Agents Ltd.
2 Mary Boast Walk
London SE5 8SP
020 3318 8900

www.mundays.com

MUNDAY'S

Crystal Palace Road, SE22
Lower Ground Floor Apartment



LOWER GROUND FLOOR



Approximate Gross Internal Area
Lower Ground Floor = 664 sqft / 61.72 sqm

Whilst every care is taken in the preparation of these plans and images, please check all dimensions, shapes and compass bearings before making any decision reliant upon them.

Munday's Estate Agents Ltd.
2 Mary Boast Walk
London SE5 8SP
020 3318 8900

www.mundays.com