



Upper Halliford Road, TW17

£230,000

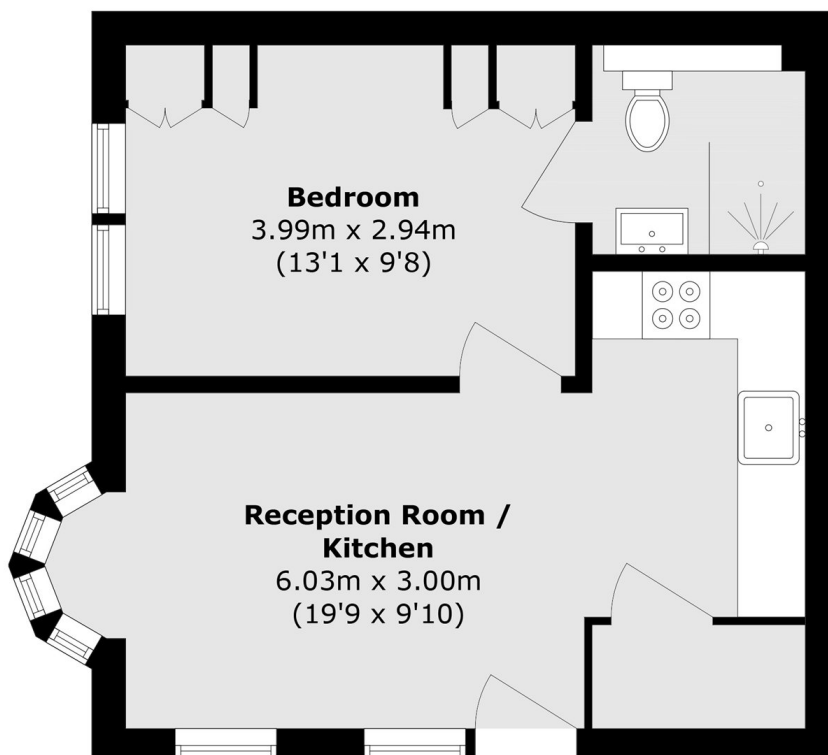
An amazing one bedroom ground floor apartment with allocated parking and communal gardens. The property is smartly presented throughout and would be perfect for someone looking to downsize, a first time buyer or an investor looking to add to their rental portfolio.

Queenswood Court is located on Upper Halliford Road. Upper Halliford Station which provides a direct service into London Waterloo is approximately a quarter of a mile away and Halliford Park is just across the the road.

Features

- One Bedroom
- Ground Floor
- Private Entrance
- Excellent Condition
- Allocated Parking
- Communal Gardens

Upper Halliford Road, Shepperton, TW17



Total area (approx.): 37.2 sq. m (400.4 sq. ft)