

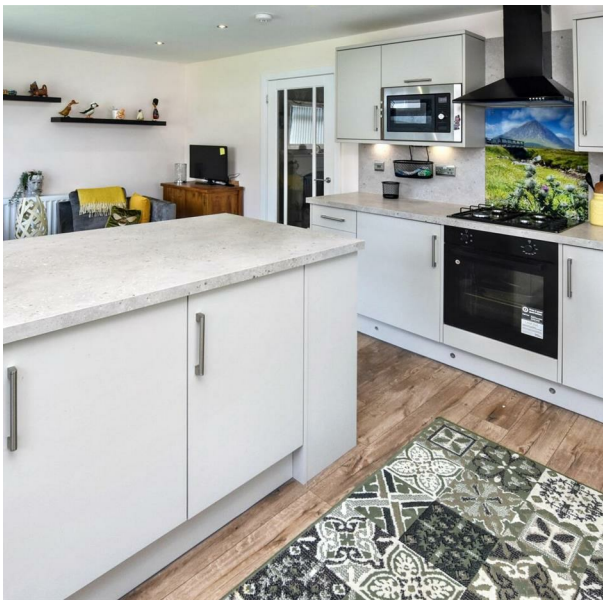
47 Almond Avenue, Renfrew, Renfrewshire, PA4 0UT

Offers Over £254,995

EPC Rating: C Council Tax Band: F



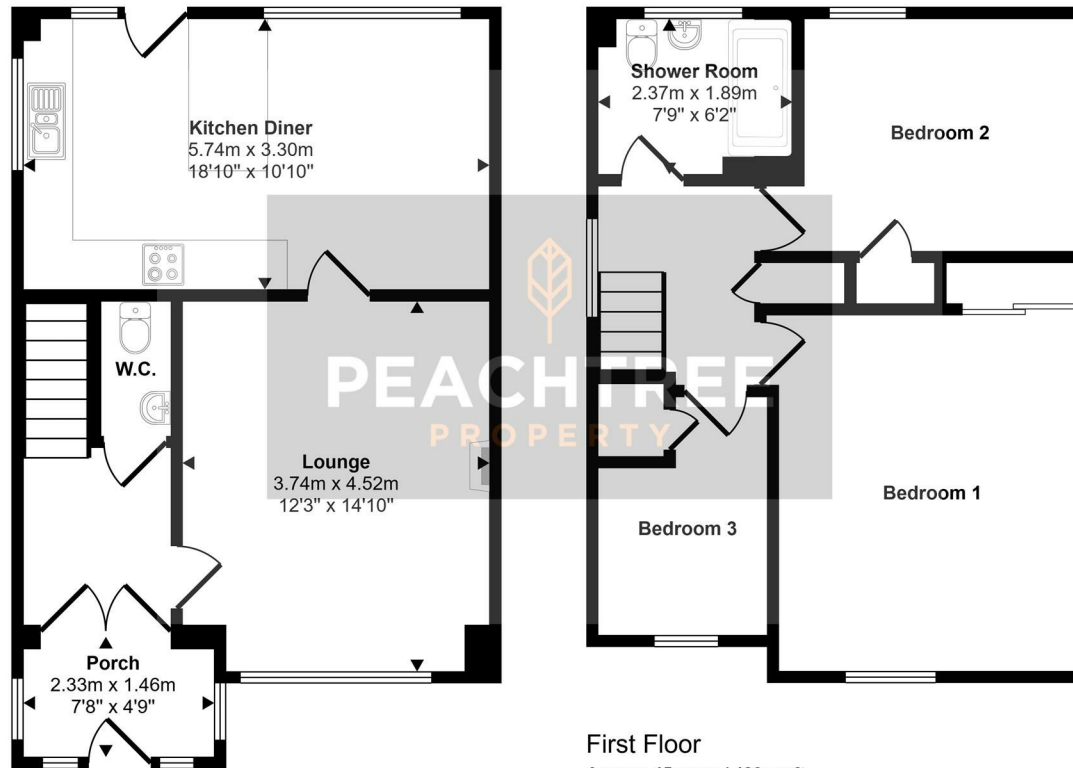
PEACHTREE
PROPERTY



Peachtree Property are delighted to welcome to the market this well-presented three bedroom detached family home situated in the ever-popular Deanpark area of Renfrew.

28 Hairst Street Hairst St
 Renfrew
 PA4 8QY
 0141 577 1111
 info@peachtreeproperty.co.uk

Approx Gross Internal Area
 93 sq m / 1003 sq ft



Ground Floor
 Approx 48 sq m / 514 sq ft

First Floor
 Approx 45 sq m / 489 sq ft

This floorplan is only for illustrative purposes and is not to scale. Measurements of rooms, doors, windows, and any items are approximate and no responsibility is taken for any error, omission or mis-statement. Icons of items such as bathroom suites are representations only and may not look like the real items. Made with Made Snappy 360.

Energy Efficiency Rating		Current	Potential
Very energy efficient - lower running costs			
(92 plus)	A		
(81-91)	B		
(69-80)	C	72	78
(55-68)	D		
(39-54)	E		
(21-38)	F		
(1-20)	G		
Not energy efficient - higher running costs			
Scotland		EU Directive 2002/91/EC	