



Draycott Close, NW2

£250,000

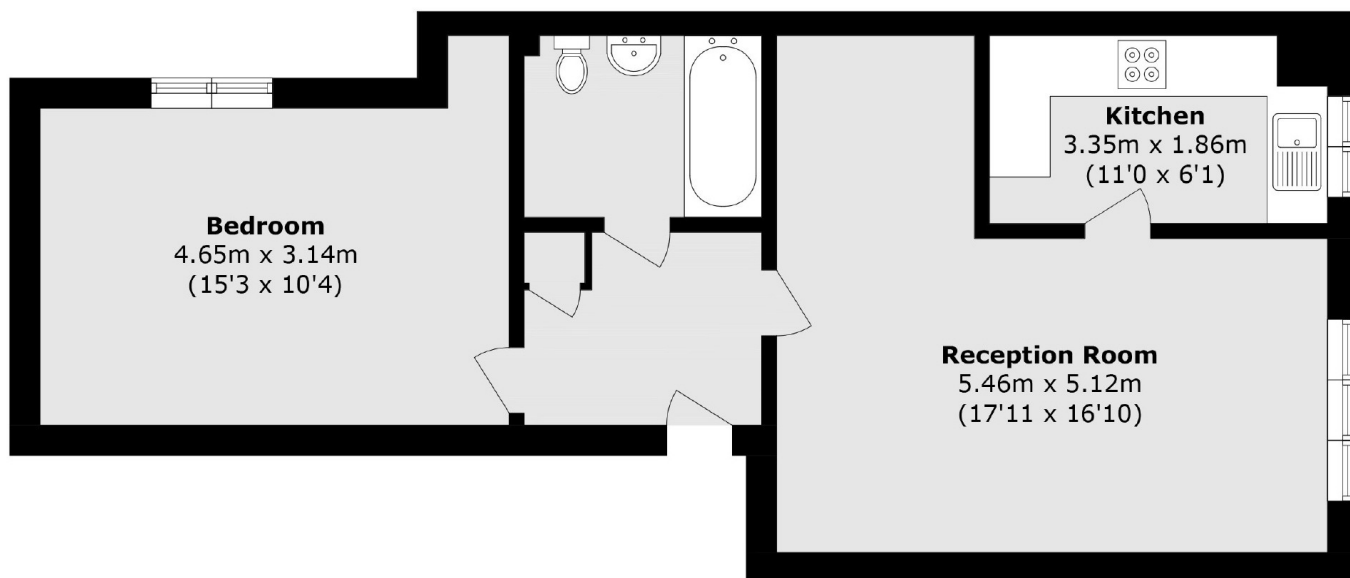
A larger than average one bedroom, first floor apartment located in a purpose built block, measuring in excess of 570 sq ft. Complete with a large reception room with space to work from home, a separate kitchen, residents' parking, and communal gardens.

The property is located close to Cricklewood Station (Thameslink) and Cricklewood Broadway, with a range of local amenities, restaurants, cafés, Brent Cross, and excellent transport and motorway links.

Features

- One Bedroom Apartment
- Purpose Built
- First Floor
- Residents Parking
- Communal Gardens
- Low Lease

Draycott Close, London, NW2



Total area (approx.): 53.2 sq. m (572.6 sq. ft)