



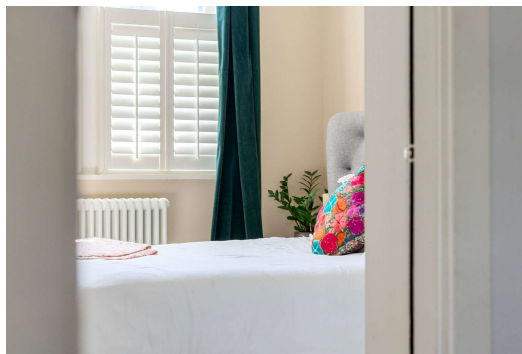
# Sandycombe Road

Richmond, TW9

Asking Price £565,000

Discover this beautifully presented two-bedroom apartment, ideally located just a short stroll from the charming village of Kew Gardens

**CHESTERTONS**



# Sandycombe Road

Richmond, TW9

- Two-bedroom apartment
- One Bathroom
- Close to Kew Village
- Close to Tube
- Share of Freehold
- Wooden Flooring



Discover this beautifully presented two-bedroom apartment, ideally located just a short stroll from the charming village of Kew Gardens.

Offering bright and spacious living throughout, the property features a stylish open-plan living and dining area, a contemporary fitted kitchen, two well-proportioned bedrooms, and a contemporary bathroom with underfloor heating. While heating throughout the apartment is controlled via a wireless Nest system, allowing remote operation for added convenience.

Perfectly positioned close to boutique shops, cafés, restaurants, and excellent transport links. The apartment also benefits from easy access to the world-renowned Royal Botanic Gardens, Kew and the picturesque surroundings of Kew Green.

Combining modern comfort with an exceptional location, this is an ideal home for professionals, couples, or small families seeking the best of village living with central London within easy reach.

**Tenure:** Share of Freehold

**Service Charge:** £1100pa

**Ground Rent:** £0

**Local Authority:** London Borough of Richmond upon Thames

**Council Tax Band:** D

Score	Energy rating	Current	Potential
92+	A		
81-91	B	82 B	82 B
69-80	C		
55-68	D		
39-54	E		
21-38	F		
1-20	G		

### *Chestertons Kew Sales*

1 Royal Parade

Kew

Richmond

TW9 3QD

kew@chestertons.co.uk

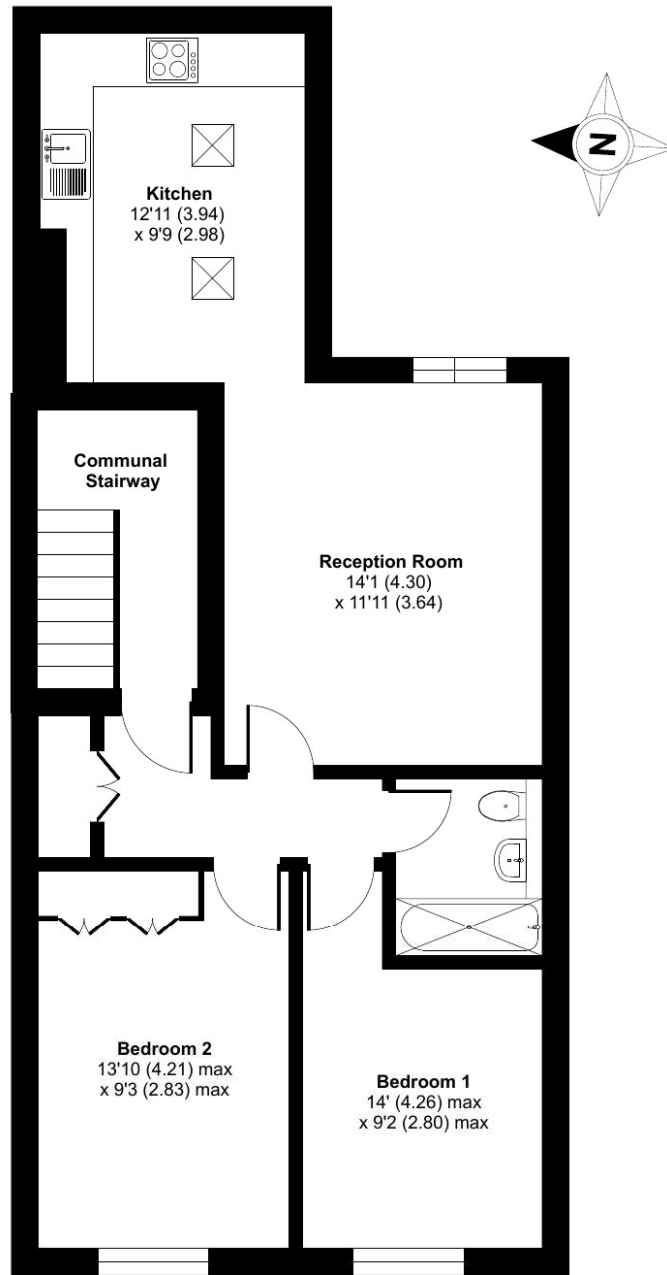
020 8104 0340

chestertons.co.uk

# Sandycombe Road, Richmond, TW9

Approximate Area = 638 sq ft / 59.2 sq m (excludes communal stairway)

For identification only - Not to scale



**FIRST FLOOR**



Floor plan produced in accordance with RICS Property Measurement 2nd Edition, Incorporating International Property Measurement Standards (IPMS2 Residential). © nichecom 2026. Produced for Chestertons. REF: 1482928

