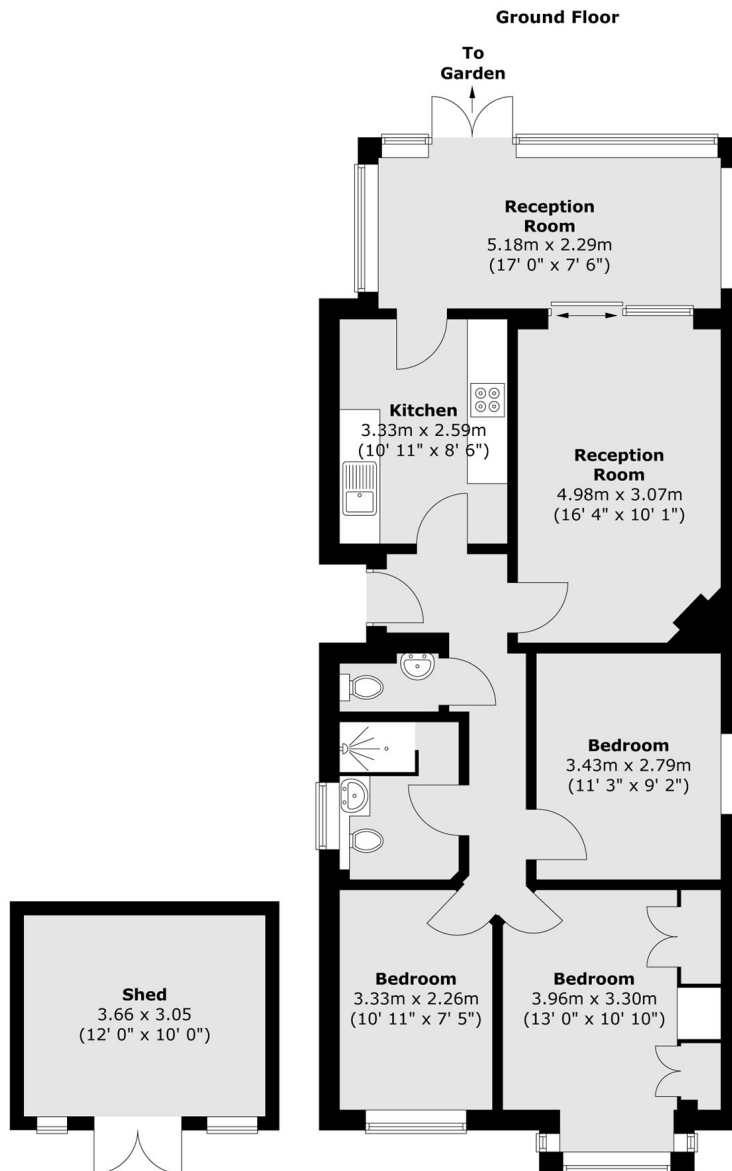




Marnham Crescent, UB6

£585,000

This sought after three bedroom detached bungalow offers spacious accommodation and excellent potential to extend (STPP). The property has a recently refurbished kitchen and bathroom and an additional separate WC. To the rear, a bright conservatory adds valuable living space which is ideal for dining, relaxing or entertaining. Further benefits include a south facing garden and off-street driveway parking for two cars.



Total area (approx.) : 81.8 sq. m (881 sq. ft)
Total shed area (approx.) : 11.2 sq. m (120 sq. ft)

Robertson Smith & Kempson Hanwell Sales
69 Greenford Avenue,
London, W7 1LL
020 8566 2339
hanwellsales@robertsonsmithandkempson.co.uk

Energy Rating: C. We aim to make our particulars both accurate and reliable. However they are not guaranteed; nor do they form part of an offer or contract. If you require clarification on any points then please contact us, especially if you're traveling some distance to view. Please note that appliances and heating systems have not been tested and therefore no warranties can be given as to their good working order.