



**Connells**

Viking Close  
Southampton

# Viking Close Southampton SO16 8BZ

for sale  
**£280,000**



## Property Description

Connells are marketing this well-kept and maintained end-terraced three-bedroom home on Viking Close, offering versatile living space and practical features throughout. The property welcomes you into a hall with a convenient W/C, leading into a spacious living area with access to the rear garden. The kitchen is fitted in a neutral style.

The rear garden is low maintenance, with decking and rear gated access.

Upstairs offers three bedrooms along with additional storage and a family bathroom fitted with a three-piece suite. The property further benefits from driveway parking for two vehicles, gas central heating, and double glazing.

Situated in a popular location, there is excellent access to Shirley High Street, supermarkets, cafés, schools, parks, and bus routes. The M27 and M271 are nearby, making commuting simple, while green spaces such as St James' Park and Southampton Common provide ideal outdoor leisure opportunities, making this a perfect home for families and professionals alike.

13' 9" MAX x 8' 6" max ( 4.19m MAX x 2.59m max )

### Bedroom Two

12' 6" x 9' 10" ( 3.81m x 3.00m )

### Bedroom Three

10' 10" x 8' 11" ( 3.30m x 2.72m )

### Bathroom

## Porch

## Hallway

## Kitchen

11' 6" x 8' 3" ( 3.51m x 2.51m )

## Living Room

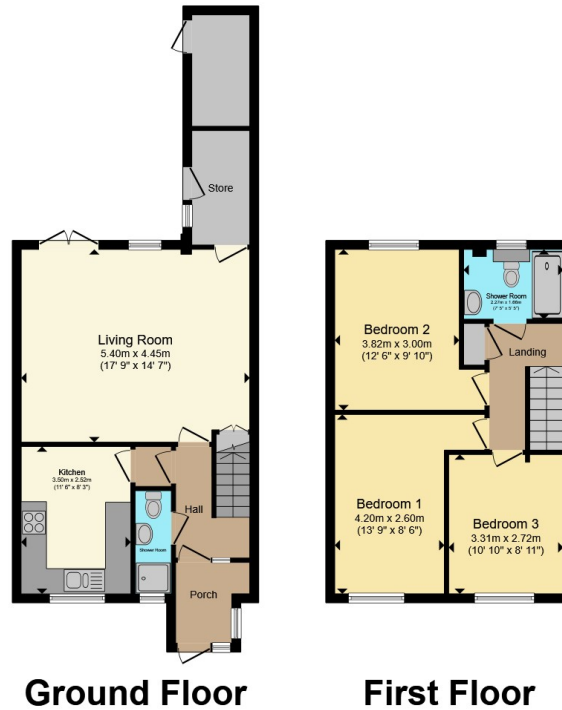
17' 9" x 14' 7" ( 5.41m x 4.45m )

## Bedroom One









**Total floor area 97.9 m<sup>2</sup> (1,054 sq.ft.) approx**  
 This floor plan is for illustrative purposes only. It is not drawn to scale. Any measurements, floor areas (including any total floor area), openings and orientation are approximate. No details are guaranteed, they cannot be relied upon for any purpose and they do not form part of any agreement. No liability is taken for any error, omission or misstatement. A party must rely upon its own inspection(s). Powered by [www.propertybox.io](http://www.propertybox.io)



To view this property please contact Connells on

**T 02380 789 351**  
**E [shirley@connells.co.uk](mailto:shirley@connells.co.uk)**

409 Shirley Road Shirley  
 SOUTHAMPTON SO15 3JD

EPC Rating: C    Council Tax Band: B

Tenure: Freehold

**view this property online [connells.co.uk/Property/SSR312945](http://connells.co.uk/Property/SSR312945)**



1. MONEY LAUNDERING REGULATIONS Intending purchasers will be asked to produce identification documentation at a later stage and we would ask for your co-operation in order that there will be no delay in agreeing the sale. 2. These particulars do not constitute part or all of an offer or contract. 3. The measurements indicated are supplied for guidance only and as such must be considered incorrect. Potential buyers are advised to recheck measurements before committing to any expense. 4. We have not tested any apparatus, equipment, fixtures, fittings or services and it is in the buyers interest to check the working condition of any appliances.

Connells Residential is registered in England and Wales under company number 1489613, Registered Office is Cumbria House, 16-20 Hockliffe Street, Leighton Buzzard, Bedfordshire, LU7 1GN. VAT Registration Number is 500 2481 05.

**See all our properties at [www.connells.co.uk](http://www.connells.co.uk) | [www.rightmove.co.uk](http://www.rightmove.co.uk) | [www.zoopla.co.uk](http://www.zoopla.co.uk)**

Property Ref: SSR312945 - 0003