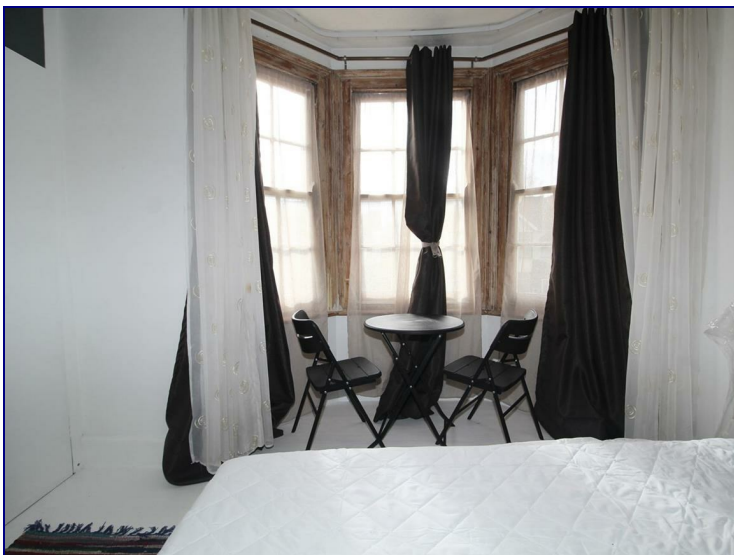


Southbury Road, Enfield, EN1 1YF



£830 PCM


Furnished Double Room to Let - House Share.


****All Bills Included****

Available Now.

Occupants will benefit from a furnished double room with fitted wardrobes. Additionally tenants will have access to a shared kitchen with appliances, great size lounge, downstairs WC garden and upstairs modern three piece bathroom suite.



| Energy Efficiency Rating | | |
|--|----------------------------|---|
| | Current | Potential |
| <i>Very energy efficient - lower running costs</i> | | |
| (92 plus) A | | |
| (81-91) B | | |
| (69-80) C | | |
| (55-68) D | | |
| (39-54) E | | |
| (21-38) F | | |
| (1-20) G | | |
| <i>Not energy efficient - higher running costs</i> | | |
| England & Wales | EU Directive 2002/91/EC |  |

| Environmental Impact (CO ₂) Rating | | |
|---|----------------------------|---|
| | Current | Potential |
| <i>Very environmentally friendly - lower CO₂ emissions</i> | | |
| (92 plus) A | | |
| (81-91) B | | |
| (69-80) C | | |
| (55-68) D | | |
| (39-54) E | | |
| (21-38) F | | |
| (1-20) G | | |
| <i>Not environmentally friendly - higher CO₂ emissions</i> | | |
| England & Wales | EU Directive 2002/91/EC |  |

