



Guide Price
£425,000

Freehold

3x  1x  1x 

**Graveney Close, Cliffe
Woods, Rochester, Kent,
ME3**

OVER 60?

Secure this property
for up to **59% less!**

Wards
Helping you move forwards



Main features

- Large 25ft lounge/dining room
- 17ft garage with driveway and parking
- Refurbished throughout
- Popular Cliffe Woods location
- Close to local amenities
- No onward chain

Accommodation

GROUND FLOOR

Entrance Hall
Cloakroom
Lounge: 25'5 x 11'2 (7.75m x 3.41m)
Kitchen: 9'1 x 8'8 (2.77m x 2.64m)

FIRST FLOOR

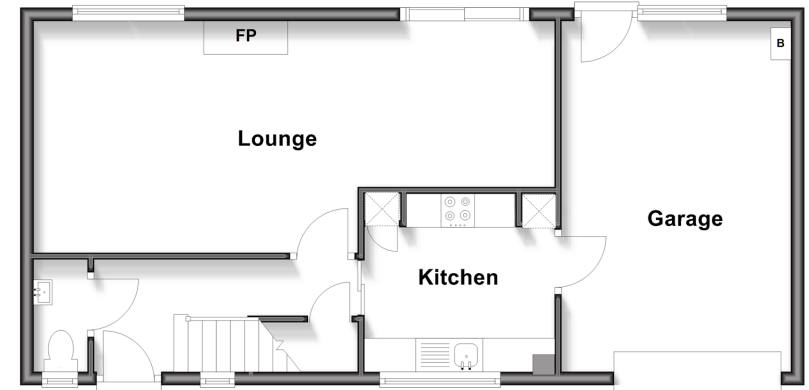
Landing
Bedroom 1 : 12'11 x 11'5 (3.94m x 3.48m)
Bedroom 2 : 12'7 x 11'2 (3.84m x 3.41m)
Bedroom 3 : 10'1 x 7'0 (3.08m x 2.14m)
Bathroom : 7'5 x 5'6 (2.26m x 1.68m)

OUTSIDE

Driveway
Garage: 17'5 x 11'2 (5.31m x 3.41m)
Front Garden
Rear Garden

Ground Floor

Approx. 59.0 sq. metres (635.6 sq. feet)



First Floor

Approx. 40.6 sq. metres (437.4 sq. feet)



Call Strood - 01634 716597 ■ wardsof Kent.co.uk

- Legal advice should be taken to verify fixtures/fittings, planning, alterations and/or lease details
- Appliances & services are untested, dimensions are approximate and floor plans are not to scale
- Through a Homewise Home For Life Plan people aged 60+ can secure this property for up to 50% less, by purchasing a Lifetime Lease



11823520/20251021/JC/SJ