



Golborne Road, W10

£426 Per week

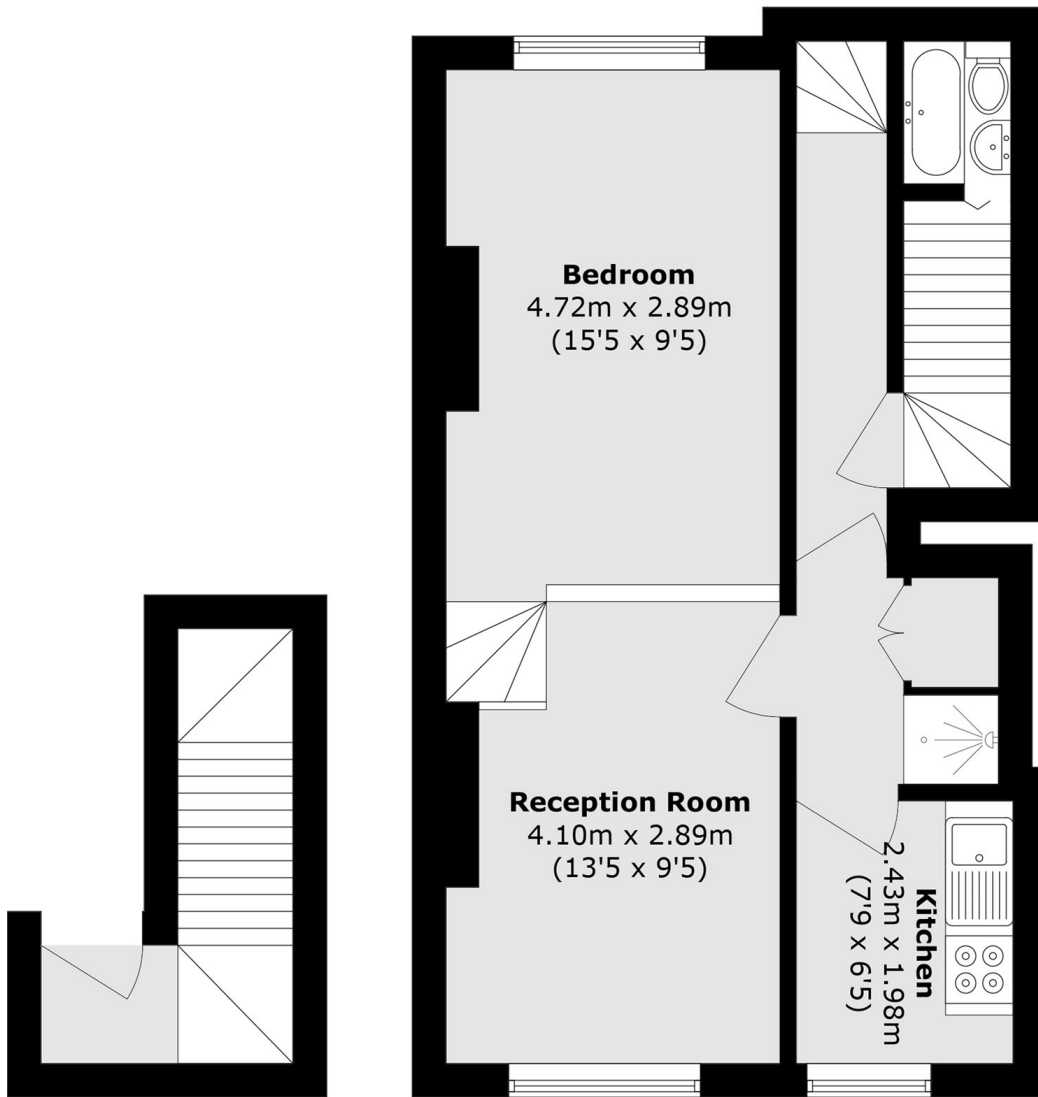
A beautifully presented one double bedroom apartment set on the second floor of a charming period conversion, featuring impressive ceiling heights, a separate kitchen and wooden flooring throughout.

The property is ideally situated on the ever popular Golborne Road and only moments away from Portobello Road and Ladbroke Grove Station.

Features

- One Bedroom
- One Bathroom
- High Ceilings
- Separate Kitchen
- Mezzanine Level
- Wooden Flooring

Golborne Road,
London, W10



First Floor

Second Floor

Total area (approx.): 48.5 sq. m (522.0 sq. ft)