



Church Road, TW10

£6,500 Per calendar month

In a superb location on the edge of Richmond Park is this incredible five bedroom house secluded within its own grounds, located opposite Ham Common and close to the River Thames.

Ham is a sought after location between Richmond and Kingston. Both Richmond Park and the River Thames are close by perfect for young families and those with an interest in the outdoors.

Features

- Five Bedrooms
- Two Bathrooms
- Modern Eat-in Kitchen
- Landscape Garden
- River Thames
- Ham Common



Church Road, TW10

There is an impressive triple reception room which is perfect for entertaining, beautiful wooden flooring, a fireplace and large sliding doors which lead out onto landscaped garden.

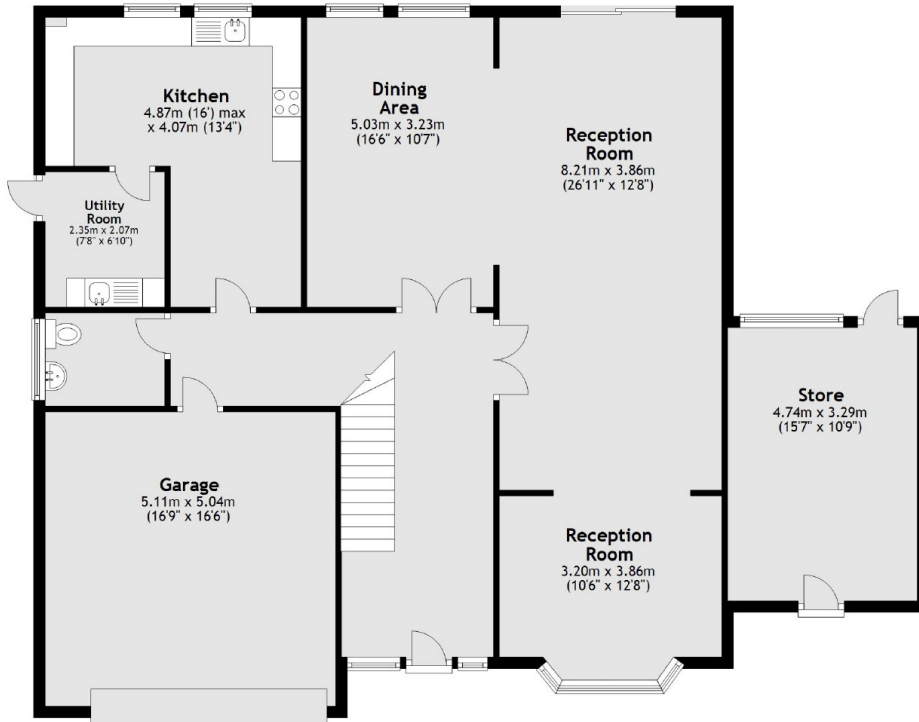
There is a large modern eat-in kitchen and separate utility room. The property comprises of a large master bedroom with built in wardrobes and four-piece en suite bathroom. There are further four bedrooms and family-size bathroom. The property also includes driveway parking for several cars and double garage for extra storage.

Ham has a village-like feel with the Common as its focal point. Buses serve both Richmond and Kingston with their excellent selection of shops, restaurants and transport links.

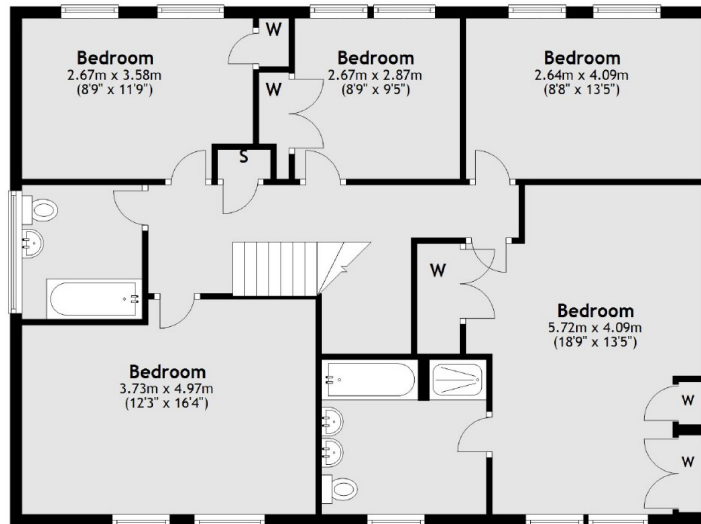


Church Road, Richmond, TW10

Ground Floor



First Floor



Main area: Approx. 206.9 sq. metres (2226.5 sq. feet)
Plus garages, approx. 25.8 sq. metres (277.3 sq. feet)
Plus outbuildings, approx. 15.6 sq. metres (167.9 sq. feet)