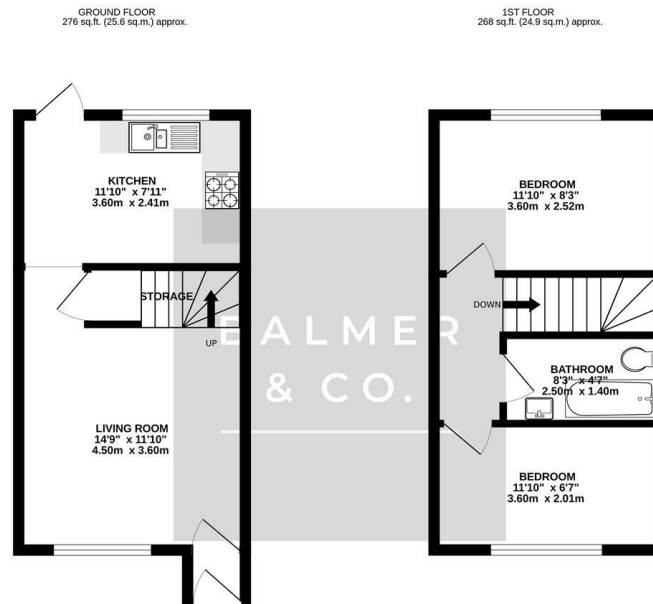


Edenbridge Drive, Radcliffe, M26 1GN
Offers Over £210,000



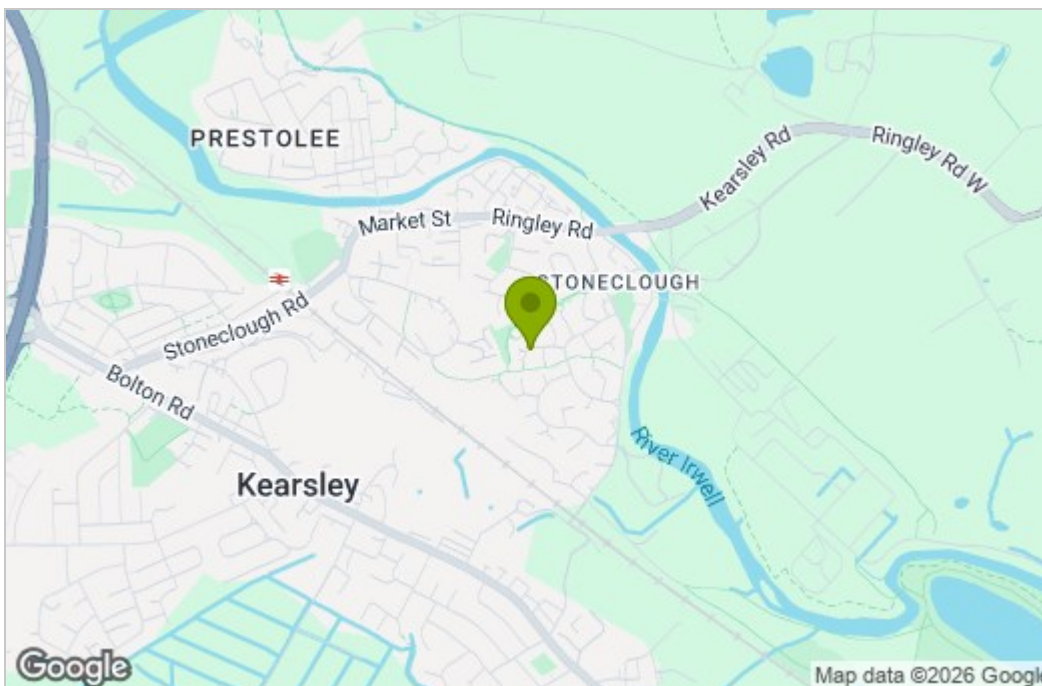
BALMER & CO are delighted to offer FOR SALE this modern two bedroom semi detached property, located on the highly popular Edenbridge Drive in Radcliffe. Well presented throughout it is ready to move into making an ideal first time buy. The ground floor comprising in brief; entrance porch, lounge with open staircase to the first floor and a fitted kitchen/dining room. To the first floor are two bedrooms, both doubles with a modern panelled bathroom suite completing the internal accommodation. Externally, there is off road parking to the front of the property with a good sized enclosed garden to the rear. Early viewings highly recommended, all enquiries welcome.

Floor Plan

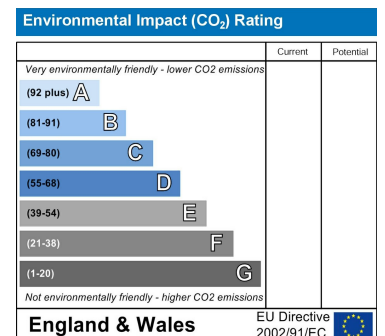
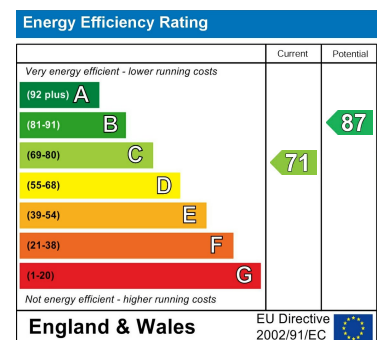


TOTAL FLOOR AREA: 543 sq.ft. (50.5 sq.m.) approx.
While every attempt has been made to ensure the accuracy of the floorplans contained here, measurements of floors, windows, doors and any other items are approximate and no responsibility is taken for any error, omission or mis-statement. This plan is for illustrative purposes only and should be used as a guide only for prospective purchasers. The services, systems and appliances shown have not been tested and no guarantee is given as to their operability or efficiency can be given.
Made with Metronix CC025

Area Map



Energy Efficiency Graph



These particulars, whilst believed to be accurate are set out as a general outline only for guidance and do not constitute any part of an offer or contract. Intending purchasers should not rely on them as statements of representation of fact, but must satisfy themselves by inspection or otherwise as to their accuracy. No person in this firm's employment has the authority to make or give any representation or warranty in respect of the property.