



Streatham High Road, SW16

£340,000

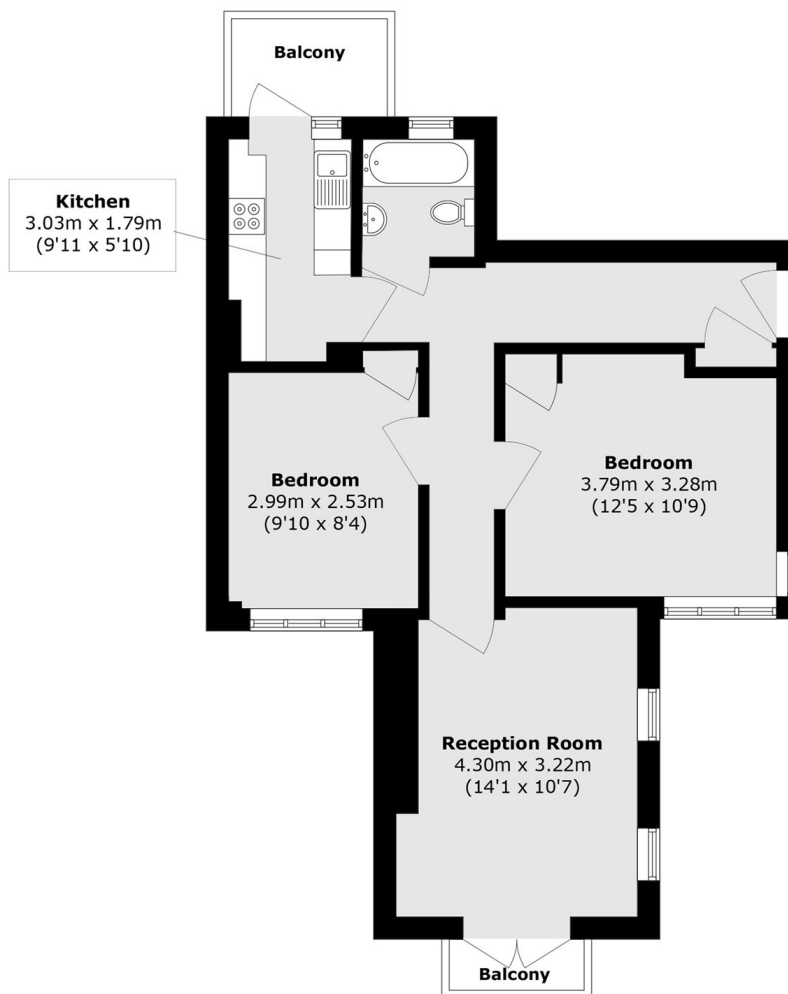
A bright and spacious two bedroom flat overlooking Streatham Common. The property offers well proportioned accommodation, including two bedrooms, a separate kitchen, and a large, light-filled living room. Further benefits include two private balconies, providing excellent outdoor space. Offered to the market chain-free, this is an ideal opportunity for a first-time buyer or investor alike.

Situated within Commonsidge Court on Streatham High Road, this property enjoys a highly convenient position directly opposite the open green spaces of Streatham Common, offering a perfect balance of urban living and access to nature. The area benefits from an excellent selection of local shops, cafés, and everyday amenities along Streatham High Road, while the vibrant neighbourhoods of Brixton, Clapham, and Tooting are all within easy reach.

Features

- Two Bedrooms
- No Onward Chain
- Two Balconies
- Views Over Streatham Common
- Separate Kitchen
- Large Reception Room

Streatham High Road, London, SW16



Total area (approx.): 52.1 sq. m (560.8 sq. ft)

Balcony area (approx.): 3.9 sq. m (41.9 sq. ft)