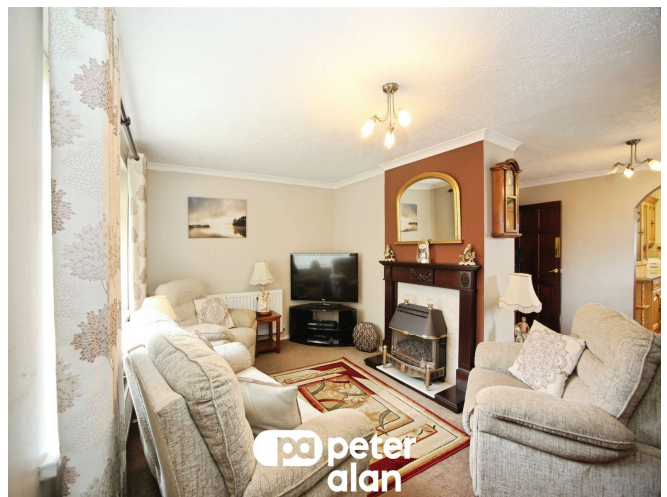




Springfield Court, offers in excess of £190,000

- No chain
- Sought after location
- Close to local amenities
- 3 bedroom semi detached house
- Open plan living and dining space
- Opportunity to improve/ modernise
- Groundfloor W.C/ Cloakroom
- Low maintenance rear garden with storage sheds.





About the property

We are delighted to present this well-presented 3-bedroom semi-detached home in sought-after Pontllanfraith.

Situated in the highly desirable area of Pontllanfraith, this well-maintained three-bedroom semi-detached property offers comfortable and practical living space, ideal for families, first-time buyers, or investors alike.

The ground floor comprises a bright and spacious open-plan living and dining area, creating a welcoming environment perfect for both everyday living and entertaining. The fitted kitchen provides ample storage and workspace, complemented by a convenient ground floor W.C.

To the first floor, the property features three well-proportioned bedrooms and a family bathroom, offering flexible accommodation to suit a variety of needs.

Externally, the home benefits from a rear courtyard area with useful outside storage sheds. To the side of the property, there is a gently sloping lawn area, providing additional outdoor space.

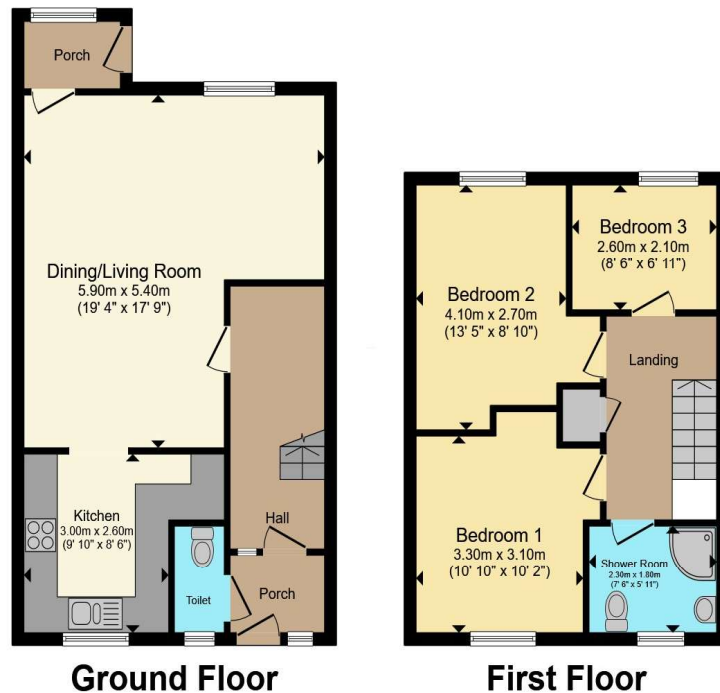


Accommodation

01495 231199

blackwood@peteralan.co.uk

Floorplan



Total floor area 91.2 m² (982 sq.ft.) approx

This floor plan is for illustrative purposes only. It is not drawn to scale. Any measurements, floor areas (including any total floor area), openings and orientation are approximate. No details are guaranteed, they cannot be relied upon for any purpose and they do not form part of any agreement. No liability is taken for any error, omission or misstatement. A party must rely upon its own inspection(s). Powered by www.propertybox.io



Important Information

Note while we endeavour to make our sales details accurate and reliable, if there is any point which is of particular interest to you, please contact the office and we will be pleased to confirm the position for you. We have not personally tested any apparatus, equipment, fixtures, fittings or services and cannot verify they are in working order or fit for their purposes. Nothing in these particulars is intended to indicate that carpets or curtains, furnishings or fittings, electrical goods (whether wired or not). Gas fires or light fittings or any other fixtures not expressly included form part of the property offered for sale. This computer generated Floorplan, if applicable, is intended as a general guide to the layout and design of the property. It is not to scale and should not be relied upon for dimensions. Tenure: We cannot confirm the tenure of the property as we have not had access to the legal documents. The buyer is advised to obtain verification from their solicitor or surveyor.

Peter Alan Limited is registered in England and Wales under company number 2073153, Registered Office is Cumbria House, 16-20 Hockliffe Street, Leighton Buzzard, Bedfordshire, LU7 1GN. VAT Registration Number is 500 2481 05. For activities relating to regulated mortgages and non-investment insurance contracts, Peter Alan Limited is an appointed representative of Connells Limited which is authorised and regulated by the Financial Conduct Authority. Connells Limited's Financial Services Register number is 302221. Most buy-to-let

