



## Balfe Street, N1

£695,000

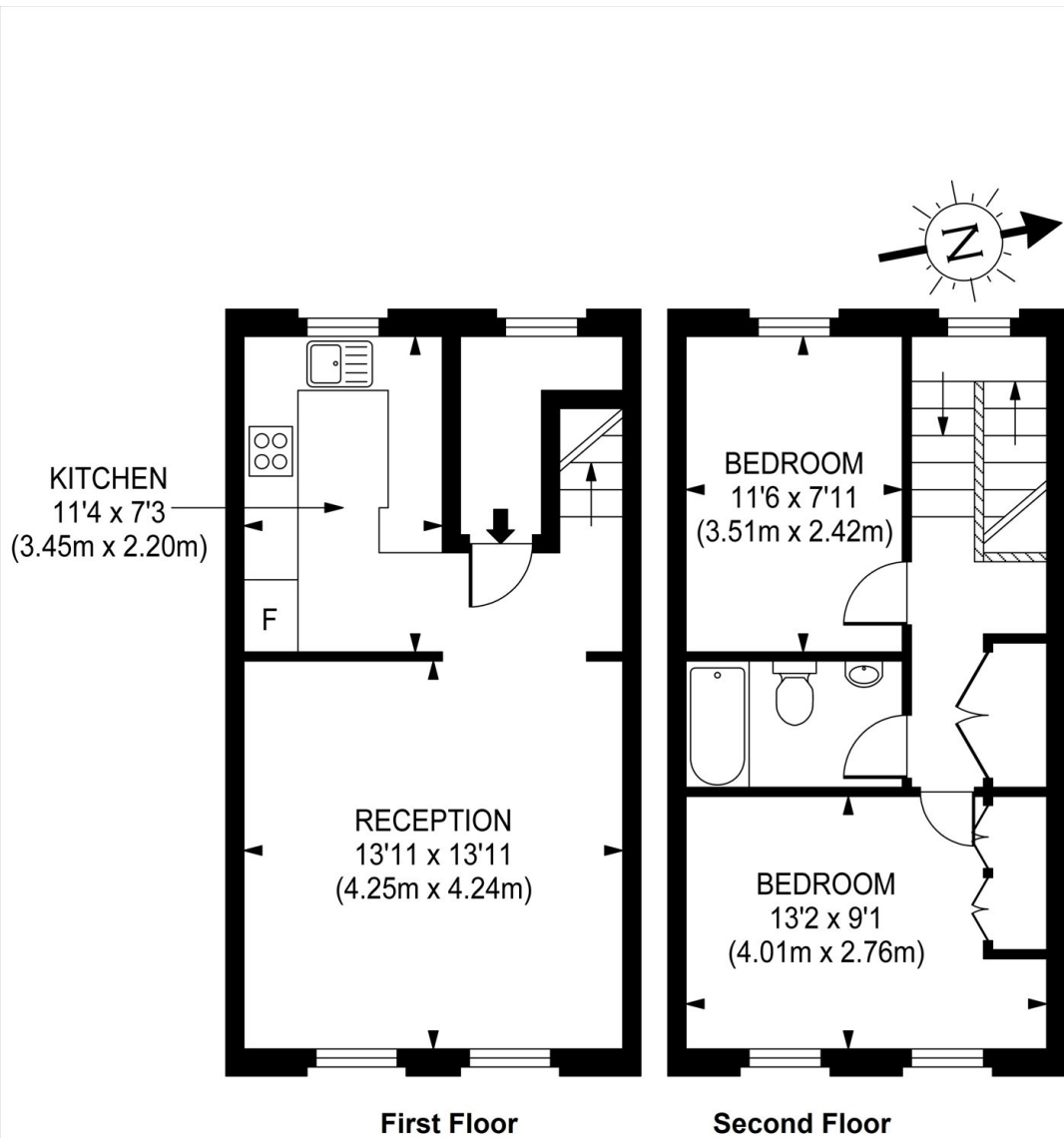
A well presented two-bedroom split level apartment set on the first floor of this attractive Georgian period conversion. The property offers a spacious separate living room, kitchen, two double bedrooms, and a modern bathroom suite, with high ceilings featured throughout.

Balfe Street is quietly tucked away in the heart of King's Cross, providing excellent access to the area's extensive transport links, Coal Drops Yard and the West End.

### Features

- Two Double Bedrooms
- Separate Living Room
- Split Level
- High Ceilings
- Period Conversion
- No Onward Chain

# Balfe Street, London, N1



Gross Internal Area 700 sq ft/ 65 sq meters

Whilst every attempt had been made to ensure the accuracy of the floorplan shown, all the measurements, positioning fixtures, fittings and any other data shown are an approximate interpretation for illustrative purposes only and are not for scale. No responsibility is taken for any error, omission, miss-statement or use of data shown.