



*jordanfishwick*

The Barn

£895 PCM



## The Barn, Mount Pleasant, Rainow, SK10 5TJ

£895 PCM

This fabulous two-bedroom apartment is set in the picturesque highly sought after village of Rainow. With exposed beams, latch lock doors this apartment is full of character and charm.

Macclesfield town centre is only a short drive away and with the countryside on your doorstep this apartment is sure to be in high demand !

AVAILABLE NOW, PART FURNISHED

Entrance hallway, downstairs bedroom/office, modern fitted dining kitchen, dual aspect living room, inner hallway with walk in cloak room, double bedroom and modern bathroom with shower over bath.

Contact Macclesfield 01625 502222 £895.00pcm

COUNCIL TAX B

EPC E

### LOCATION

The small but pretty village of Rainow lies on the western side of the Peak District on the border between Cheshire and Derbyshire, in the valley of the River Dean. It is surrounded by stunning countryside, with rolling hills to the east and the expansive Cheshire Plain to the west.

Set in Cheshire's plains, on the fringe of the Peak District National Park, Macclesfield combines the old with the new. Originally a medieval town, Macclesfield became the country's 'Silk' capital in the 1750's, whilst it still retains that heritage, in recent years it has grown to become a thriving business centre. Macclesfield is a modern shopping centre with a range of leisure facilities to suit most tastes. There is a popular monthly Treacle Market which is a bustling Arts, Antiques, Crafts, Food and Drink Market, held on the cobbles of the town centre with around 140 stalls of exceptional food and drink, unique crafts and vintage and information from the Macclesfield community. There are many independent and state primary and secondary schools. The access points of the North West Motorway network system, Manchester International Airport and some of Cheshire's finest countryside are close at hand. Intercity rail links to London Euston and Manchester Piccadilly can be found at Macclesfield and Wilmslow railway stations as well as commuter rail links to the local business centres.

### DIRECTIONS



- TWO GOOD SIZED BEDROOMS
- DELIGHTFUL SEMI RURAL POSITION
- COUNTRY KITCHEN WITH RAYBURN
- COURTYARD GARDEN
- OFF ROAD PARKING
- COUNCIL TAX B
- EPC E

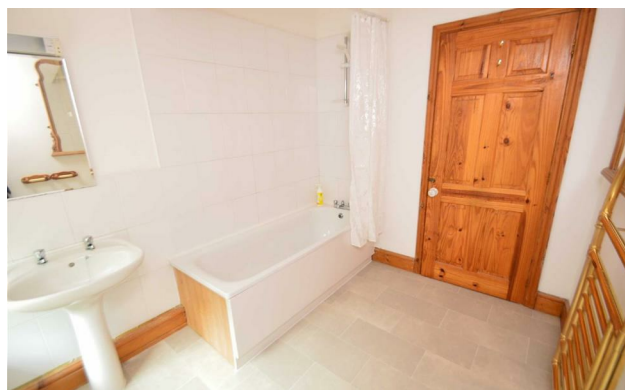
Postcode - SK10 5TJ

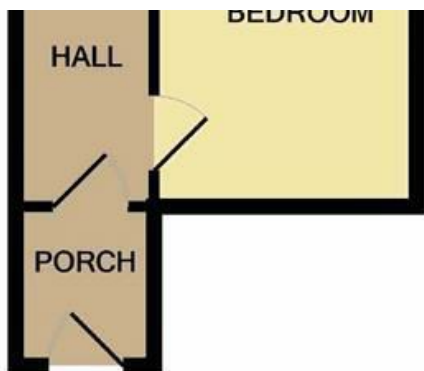
EPC Rating - E

Floor Area - sq ft

Local Authority - Cheshire East Council

Council Tax - B





GROUND FLOOR

Measurements are approximate. Not to scale. Illustrative purposes only  
 Made with Metropix ©2020



These particulars are believed to be accurate but they are not guaranteed and do not form a contract. Neither Jordan Fishwick nor the vendor or lessor accept any responsibility in respect of these particulars, which are not intended to be statements or representations of fact and any intending purchaser or lessee must satisfy himself by inspection or otherwise as to the correctness of each of the statements contained in these particulars. Any floorplans on this brochure are for illustrative purposes only and are not necessarily to scale.

Offices at: Offices at Chorlton, Didsbury, Disley, Hale, Glossop, Macclesfield, Manchester Deansgate, Manchester Whitworth Street, New Mills, Sale, Wilmslow and Withington

01625 536300