



AWARDED FOR
MARKETING | SERVICE | RESULTS



38 Gosforth Lane, Watford

Fixed Price £500,000



 fairfieldestates



38 Gosforth Lane

Watford, Watford

AN ABSOLUTELY STUNNING THREE BEDROOM BRICK BUILT TERRACE HOUSE WHICH HAS BEEN EXTENDED TO THE REAR LOCATED ON A POPULAR ROAD IN SOUTH OXHEY.

Fairfield Estate Agents are delighted to present to the market this beautifully presented three-bedroom mid-terrace family home, ideally located on Gosforth Lane in South Oxhey.

This brick-built property benefits from double glazing and gas central heating and features a generously sized East-facing rear garden.

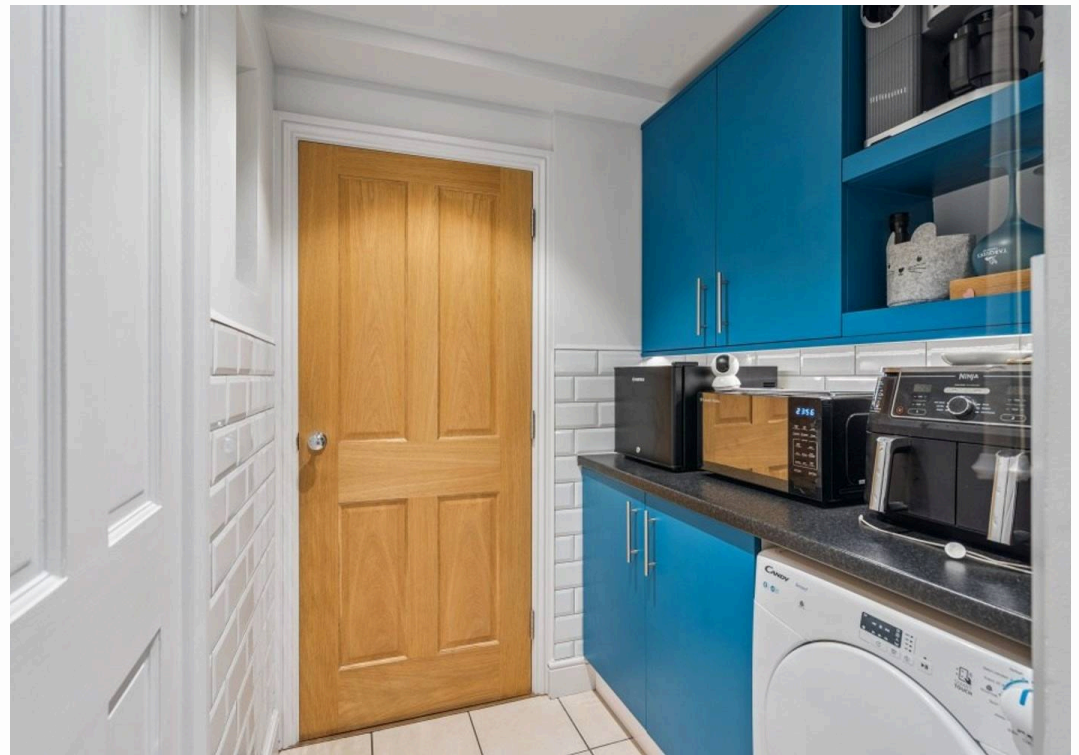
The property is ideally positioned in the market for any buyer looking for the perfect home, this exceptional house has been completely renovated and extended over the years of ownership by the existing owners.

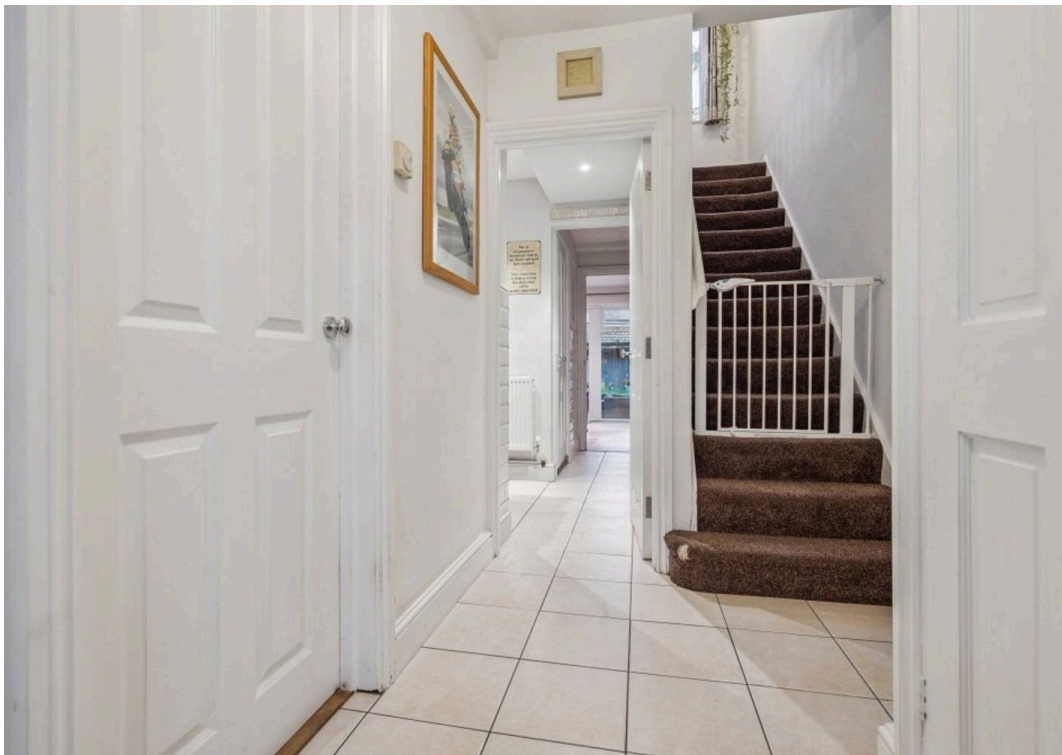
Upon entering the property, you are welcomed by a spacious entrance hallway, providing access to a generous dining room and an inner lobby leading to a fully fitted kitchen with a range of base and eye-level units. The rear extension creates an additional reception area, with the original structure now accommodating a useful utility space and ground floor guest WC.

To the first floor are three well-proportioned bedrooms and a modern family bathroom.

Externally, the rear garden is mainly a section of lawn, featuring a large brick pond and substantial external storage measuring an impressive 6m x 3m, with power and lighting. The garden and outbuilding are accessible both via the property



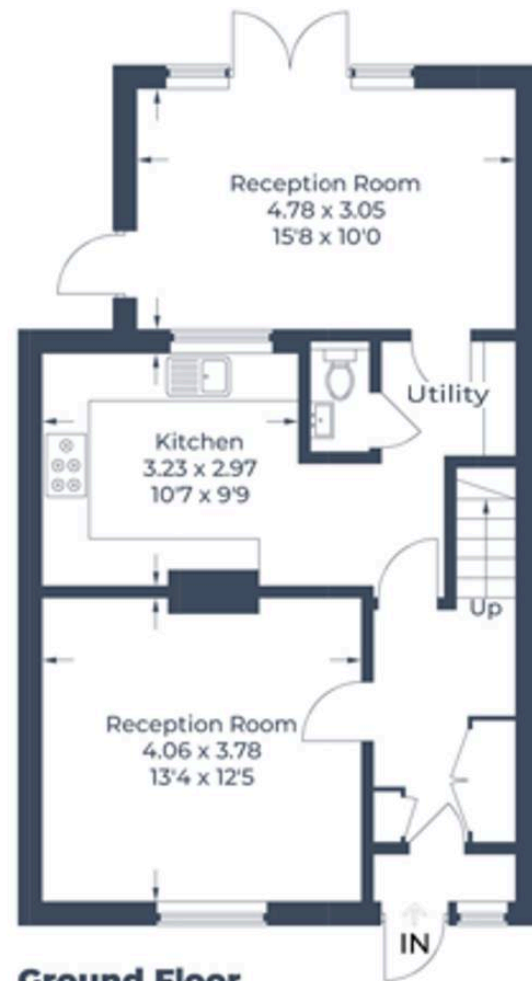








Approximate Gross Internal Area
Ground Floor = 58.3 sq m / 627 sq ft
First Floor = 46.9 sq m / 505 sq ft
Total = 105.2 sq m / 1,132 sq ft



Ground Floor



First Floor

Illustration for identification purposes only,
measurements are approximate, not to scale.
© CJ Property Marketing Produced for Fairfield Estates





Fairfield – Oxhey

1 Station Approach, Watford – WD19 7DT

020 8428 0540 • rob@fairfieldstates.co.uk • fairfieldstates.co.uk/

We have prepared these particulars as a general guide of the property and they are not intended to constitute part of an offer or contract. We have not carried out a detailed survey of the property and we have not tested any apparatus, fixtures, fittings, or services. All measurements and floorplans are approximate, and photographs are for guidance only. These should not be relied upon for the purchase of carpets or any other fixtures or fittings. Lease details, service