



**GASCOIGNE
HALMAN**

2 JODRELL DRIVE, GRAPPENHALL, WARRINGTON

THE AREAS LEADING ESTATE AGENT

Situated on the ground floor with peaceful views is this two bedroom and two bathroom apartment. Sold with no onward chain this apartment also benefits from parking to the rear.

In brief the accommodation comprises entrance hallway with storage cupboard. A large lounge/diner with large bay windows that flood the living space with natural light, opens into the fitted kitchen with integrated oven, gas hob, extractor, dishwasher and fridge/freezer.

Two double bedrooms are accompanied by a master en-suite and walk in wardrobe, plus a main bathroom. Externally there is parking to the rear.

LOCATION

Stockton Heath village boasts a first-class range of shopping, schooling and recreational facilities. The nearby motorway

system brings Manchester, Liverpool, Chester etc. within easy commuting distance and there are fast and frequent train services to London from local stations. Manchester International Airport can be reached normally in about twenty minutes by car and the area is surrounded by glorious Cheshire countryside.

DIRECTIONS

SatNav: WA4 3HA

TENURE

Leasehold - 200 years from 1 January 2003
- SC £1,869.06 PA

LOCAL AUTHORITY

Warrington BC - Council Tax Band D

EPC RATING

Current - C

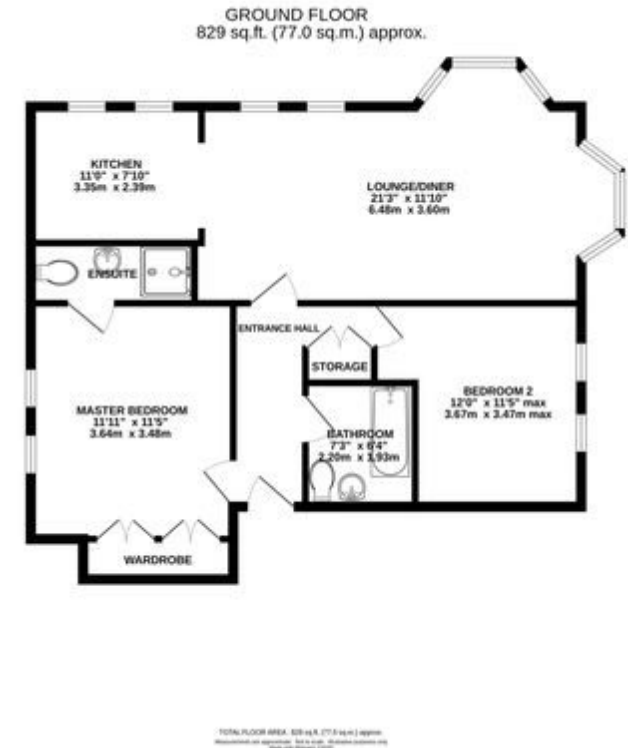
STOCKTON HEATH OFFICE

01925 860400

stocktonheath@gascoignealman.co.uk

29 Walton Road, Stockton Heath, WA4 6NJ

**GASCOIGNE
HALMAN**



NOTICE Gascoigne Halman for themselves and for the vendors or lessors of this property whose agents they are give notice that: (i) the particulars are set out as a general outline only for the guidance of intending purchasers or lessees, and do not constitute, nor constitute part of, an offer or contract; (ii) all descriptions, dimensions, references to condition and necessary permissions for use and occupation, and other details are given in good faith and are believed to be correct but any intending purchasers or tenants should not rely on them as statements or representations of fact but must satisfy themselves by inspection or otherwise as to the correctness of each of them; (iii) no person in the employment of Gascoigne Halman has any authority to make or give any representation or warranty whatever in relation to this property.