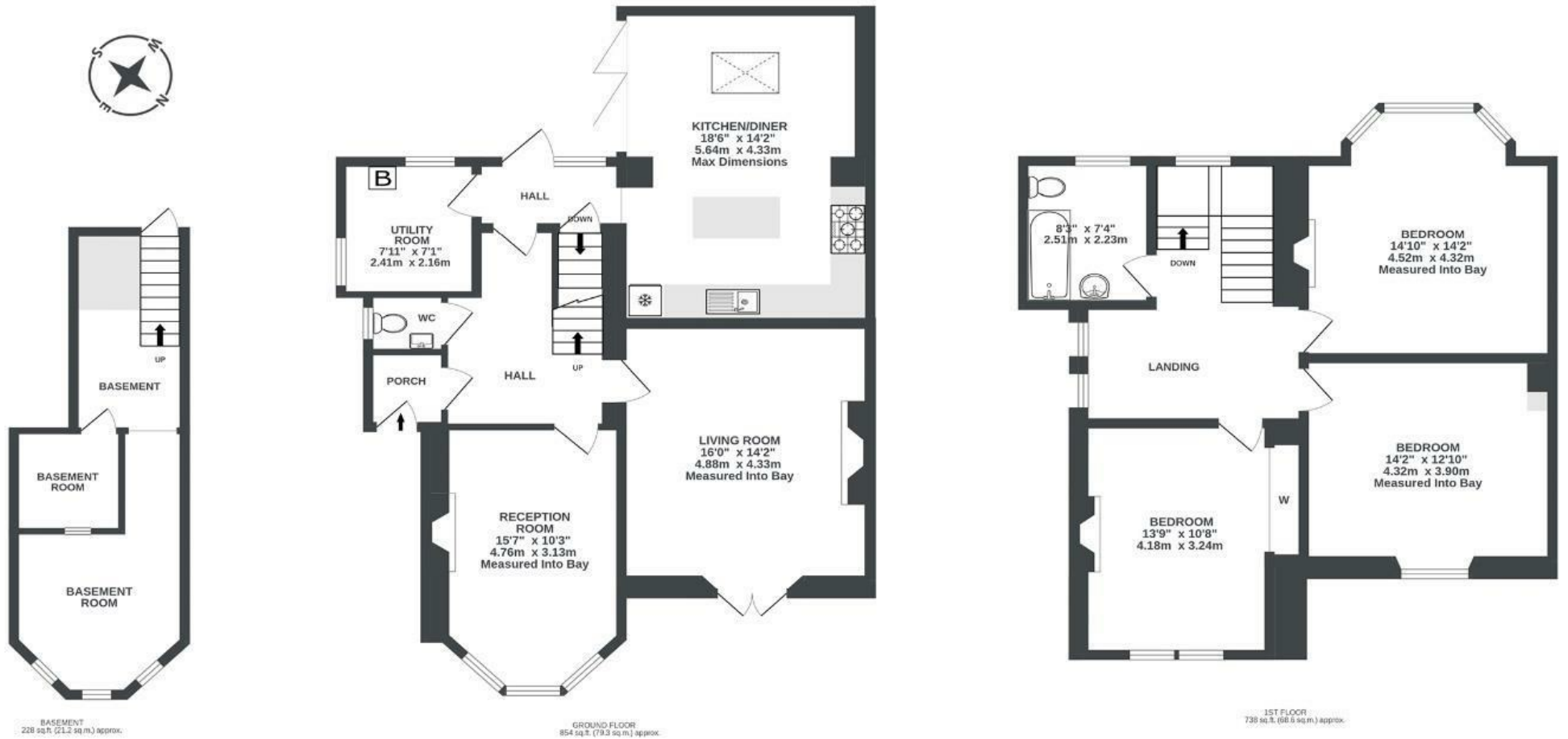


Cheltenham Road

C O T H A M

APPROXIMATE FLOOR AREA
169.1 SQM / 1820 SQFT



Illustrations are for reference purposes only, measurements are approximate, not to scale.

Boardwalk

Cheltenham

, BRISTOL



£850,000



3 Bedrooms



BS6 5RH



1 Bathrooms

"On the day we first moved in, our lovely neighbours dashed round to bring us not one, but two kettles, to ensure we didn't go a day without tea. Lazing in the kitchen with the doors all open, enjoying the fresh air and watching our cat explore the neighbourhood. Watching the squirrels play on the front lawn chasing each other up and down the trees. Being so close to the hustle and bustle, and yet also so removed."

