

**OVER 60?**

Secure this property  
for up to **59% less!**



**Guide Price**

**£570,000**

**Freehold**

3x  2x  1x 

Brookes Place, Newington, Sittingbourne,  
Kent, ME9

*Wards*

Helping you move forwards



## Main features

- A larger than normal detached bungalow that offers plenty of space and accommodation
- Impressive lounge and en-suite bathroom to bedroom 1
- Private and generous rear garden
- Oversized garage for additional storage
- Secluded cul-de-sac position
- Village location
- No chain

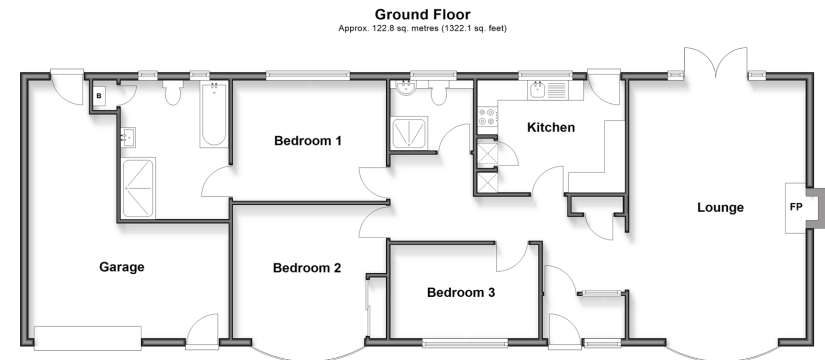
## Accommodation

### GROUND FLOOR

- Porch
- Entrance Hall
- Bedroom 1 : 12'1 x 9'8 (3.69m x 2.95m)
- En-Suite Bathroom
- Bedroom 2 : 12'2 at widest point x 10'8 (3.71m x 3.25m)
- Bedroom 3 : 11'6 x 7'6 (3.51m x 2.29m)
- Shower Room
- Kitchen: 11'8 x 9'6 (3.56m x 2.90m)
- Lounge : 21'0 x 14'1 (6.41m x 4.30m)

### OUTSIDE

- Front Garden
- Rear Garden
- Garage : 21'4 x 16'0 (6.51m x 4.88m)
- Driveway



Call Rainham - 01634 373531 ■ [wardsokent.co.uk](http://wardsokent.co.uk)

■ Through a Homewise Home For Life Plan people aged 60+ can secure this property for up to 59% less, by purchasing a Lifetime Lease



18270811/20260321/SM/DW